

DUSK  
— BY —  
BINGHATTI

**Dusk** [ duhsk ] *noun.*

*Evoking the enigmatic transition between day and night, dusk is a metaphor for transitions, endings, and the ephemeral nature of life itself captivating the heart and mind with its fascinating allure.*





Binghatti is a renowned Emirati property brand in Dubai, United Arab Emirates. The brand stands as an emblem of excellence within the global real estate sector. Prominent for its distinguished portfolio comprising some of the world's most iconic architectural marvels, Binghatti caters to diverse market segments offering a spectrum ranging from accessible to ultra high-end projects. Its signature architectural ethos is a manifestation of the brand's unique design DNA meticulously woven into its expansive array of developments. With an astounding real estate portfolio boasting over 60 projects valued at an excess of AED 30 billion, Binghatti commands a notable position as one of the UAE's foremost privately held developers. The company successfully delivered 20,000 units prior to 2024, further solidifying its stature in Dubai's dynamic real estate landscape. Distinguished for its pioneering approach, Binghatti has formed unprecedented collaborations with prestigious luxury brands such as BUGATTI, Mercedes-Benz, and Jacob&Co. to craft unique branded real estate ventures - a distinction unmatched on a global scale.

A photograph of the Dubai skyline, featuring the Burj Khalifa as the central focus, viewed through a large, dark, circular frame. The scene is set against a blue sky and a body of water in the foreground. The frame is illuminated from the top left, creating a bright, curved highlight.

## **DUBAI'S RAPIDLY EVOLVING REAL ESTATE SCENE**

The city epitomizes real estate advancement and speed with its futuristic skyline and relentless commitment to innovation. It stands as the global hub of tourism and trade due its strategic location and favourable regulations that attract investors seeking unparalleled opportunities.

# TABLE OF CONTENTS

---

01

*ABOUT  
THE PROJECT*

02

*DESIGN  
DETAILS*

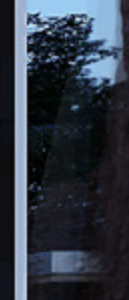
03

*FLOOR PLANS*



ABOUT THE  
PROJECT

ENDINGS FADE INTO  
NASCENT BEGINNINGS



PROJECT LOCATION

# THE EPITOME OF SPEED AND ADVANCEMENT



E44 DUBAI  
ALKHAIL ROAD

BURJ  
AL ARAB

BINGHATTI  
DUSK

HESSA  
STREET

E311 SHEIKH  
MOHAMMAD BIN  
ZAYED ROAD

DOWNTOWN  
DUBAI

ABOUT THE PROJECT

# JUMEIRAH VILLAGE CIRCLE

Boasting a landscape that mirrors the city's relentless pace of advancement, Jumeirah Village Circle (JVC) stands as a testament to rapid growth in the real estate sector. With its strategic location and dynamic urban planning, JVC offers investors a promising landscape ripe with opportunities for lucrative returns and sustainable development.

## NEARBY AMENITIES

**MALL**

- 1. Circle Mall

**SUPERMARKET**

- 1. Spinneys
- 2. Grandiose
- 3. Choithrams
- 4. Nesto Hypermarket
- 5. Viva Supermarket

**SCHOOL**

- 1. JSS International School
- 2. Kids World Nursery
- 3. Ladybird Nursery

**ENTRY POINT**

**HOSPITAL/CLINIC**

- 1. Aster Medical Clinic
- 2. Life Medical Center
- 3. Magnum Family Medical Center
- 4. Dr. Joy Dental Clinic

**BINGHATTI PROJECTS**

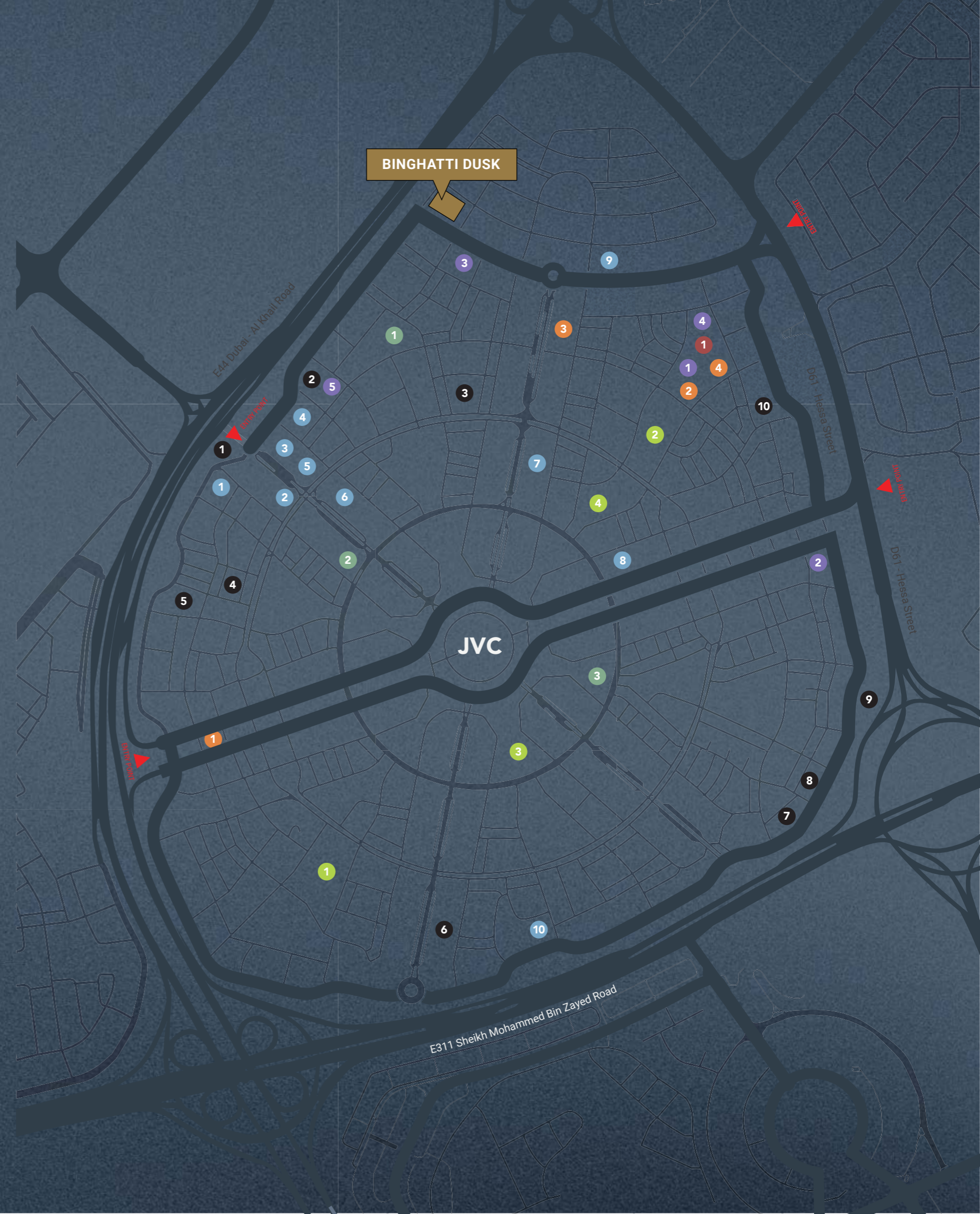
- 1. Binghatti Onyx
- 2. Binghatti Emerald
- 3. Binghatti House
- 4. Binghatti Corner
- 5. Binghatti Lavender
- 6. Binghatti Orchid
- 7. Binghatti Amber
- 8. Binghatti Gardenia
- 9. Binghatti Azure
- 10. Binghatti Venus

**PARK**

- 1. Halfa Park
- 2. RootsCamp
- 3. Community Park South
- 4. Community Park North

**BINGHATTI COMPLETED PROJECT**

- 1. Binghatti Gate
- 2. Binghatti Heights
- 3. Binghatti Mirage
- 4. Binghatti Rose
- 5. Binghatti Jasmine
- 6. Binghatti Crest
- 7. Binghatti Luna
- 8. Binghatti Nova
- 9. Binghatti Gems
- 10. Binghatti Crescent





ABOUT THE PROJECT

# PROJECT FACTS

## PROPERTY TYPE

RESIDENTIAL & RETAIL

## PLOT AREA

2593.16 SQM / 27912.51 SQFT

## DESCRIPTION

2B + G + 4 RESIDENTIAL FLOORS  
+ ROOF

## NUMBER OF UNITS

STUDIO APARTMENT - 52  
1 BEDROOM APARTMENT - 53

## TOTAL UNITS

RESIDENTIAL UNITS - 105  
SHOP (GROUND FLOOR) - 02



DESIGN  
DETAILS

MATERIAL LIST

# MAIN LOBBY



Light Grey Honed  
Concrete Paint



Statuario Marble



Travertine



Brushed Brass



Tinted Glass



Oak Wood



Fluted Oak Wood

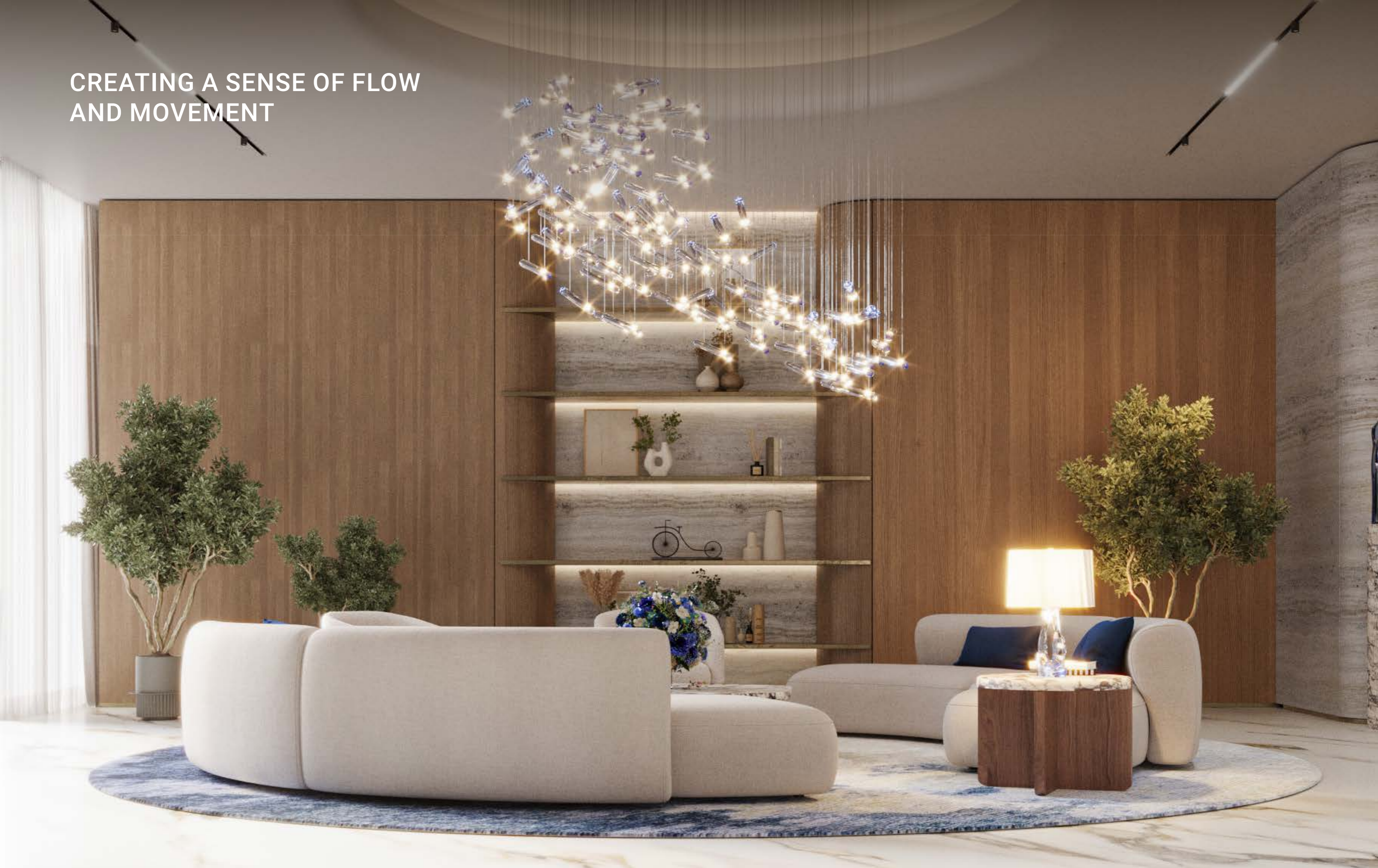


Wallpaper

All finishes are subject to change without notice at our sole discretion for any reason including aesthetic purposes.



CREATING A SENSE OF FLOW  
AND MOVEMENT



MATERIAL LIST

# APARTMENT



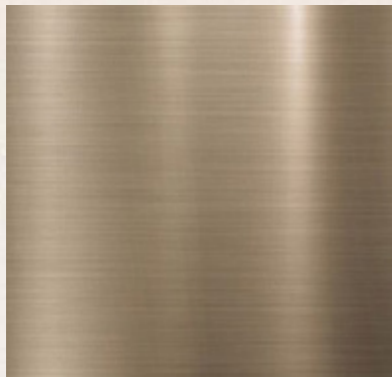
Oak Wood



Wood Porcelain



Travertine



Brushed Brass



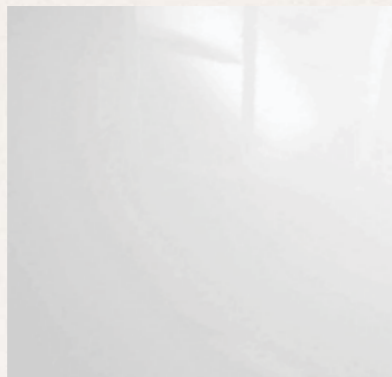
Mirror



Glossy Beige Wood



Fluted Oak Wood



Glossy White Wood

All finishes are subject to change without notice at our sole discretion for any reason including aesthetic purposes.



FLUIDITY TRANSCENDS  
FUNCTIONALITY





FLOOR  
PLANS





AN INTERPLAY OF  
DEPTHS & TEXTURES

 | بن غاطي  
BINGHATTI



A BEACON OF AUTHENTICITY  
AND CRAFTSMANSHIP

