

ÉLEVÉ

BY DEYAAR

DOWNTOWN JEBEL ALI,
SHEIKH ZAYED ROAD

ارتق بحياتك
Live Above it All.





ELEVATED

THE BENCHMARK FOR

LIVING IN NEW DUBAI

مفهوم جديد للحياة الراقية
في مدينة دبي الجديدة



A.

ÉLÉVÉ

اليفي

مفهوم جديد للحياة الراقية
ELEVATE *Your* LIFESTYLE.



ملاذ متألّق بجانب ميناء
داون تاون جبل علي
DOWNTOWN JEBEL ALI'S
PORTSIDE JEWEL.

ÉLEVÉ, a modern luxury beacon and all-inclusive enclave, soars above New Dubai. Meticulous design, curated podium amenities, and captivating port views grace its striking facade.

يتميز إلفي بإطلالته خلابة على أفق مدينة دبي الجديدة، ويضم العديد من المرافق التي تلبي متطلباتكم حيث يشكل نمودجاً فريداً للحياة العصرية. سهر أمهر المصممين على هذا المشروع حيث تمت مراعاة أعلى معايير الدقة، كما يضم وسائل راحة مصممة بعناية فائقة، وإطلالات ساحرة على الميناء تضيف لمسةً جماليةً على واجهته الخلابة.

ارتق بأفاقك
BROADEN YOUR HORIZON





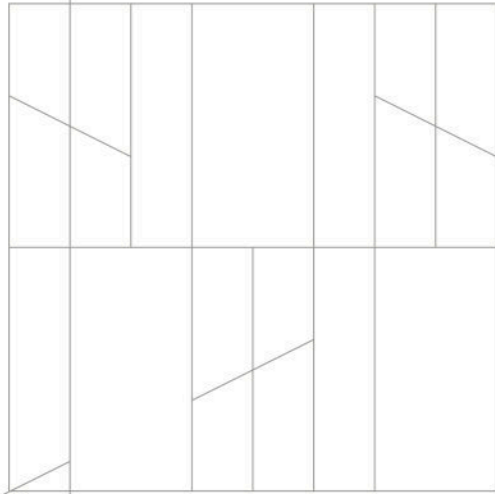
يضم إيفي مجموعة رائعة من المساكن الفسيحة المكونة من استوديوهات، ومساكن تضم غرفة نوم واحدة، أو غرفتي نوم، أو ثلاث غرف نوم، أو مقق حدائقية، ويوفر تجربة معيشية لا مثيل لها ومرافق تعطي مفهوماً جديداً للحياة الراقية. في إيفي، تمتزج مساكن الميناء الخلابة ومرافقه النابضة بالحياة في انسجام تام مع المعنى الحقيقي للحياة الفاخرة.

Featuring studios, 1, 2, and 3-bedroom residences, as well as garden apartments, ÉLEVÉ offers an unparalleled living experience with spectacular lifestyle inclusions. Here, effortless connections and the vibrant energy of the port seamlessly blend with the sophistication of elegant living.

A. Élevé

التصميم المعماري
ARCHITECTURE

إطلالاتٌ خلابة على أفق المدينة
ELEVATE *Your* SKYLINE.



NEW DUBAI'S SOARING
ARCHITECTURAL GEM.

ÉLEVÉ commands attention with its distinctly contemporary architecture and soaring elevation, mimicking the dynamism of the Jebel Ali Port.

جوترةٌ معمارية تترىع في
قلب مدينة دبي الجديدة

يأتي إيفي بتصميمه المعماري المعاصر
وارتفاعه المائق الملفت للنظر ليكمل جمال
المشهد الديناميكي لميناء جبل علي



A. Elev

ELEVÉ by Deyaa

ÉLEVÉ



B.

LOCATION

الموقع



عنوان مميز في قلب المدينة.

ELEVATE *Your* URBAN PLAYGROUND.

Located on the Sh. Zayed Road, your serene haven awaits at ÉLEVÉ. Nestled at the heart of this thriving precinct, you'll have effortless access to Dubai's vibrant pulse—sun-drenched plazas, bustling cafes, pedestrian-friendly streets, and the city's dazzling lights a mere heartbeat away.

يقع إلفي في موقع مثالي على شارع الشيخ زايد ليكون بذلك ملائكم الآمن من صخب الحياة. يقع المشروع في قلب هذه المنطقة المزدهرة من مدينة دبي، ما يتيح لكم سهولة الوصول إلى المرافق الحيوية في المدينة، والساحات المفعمة بأشعة الشمس، والمزارع المخصصة للمشاة، والأضواء المبهرة التي تقع على بعد خطوات فقط.

حان الوقت للتعرف على
معنى الرفاقية في إلفي

EMBRACE THE ÉLEVÉ
LIFESTYLE.

At ÉLEVÉ, convenience and serenity coexist harmoniously, inviting you to live life to the fullest. Dive into the city's vibrant tapestry, then retreat to your private oasis.

في إلفي تجتمع الراحة مع الفخامة بانسجام تام، لتعيثوا حياتكم على أكمل وجه، وتتعرفوا على تفاصيل المدينة المفعمة بالحياة، ثم العودة إلى ولحتم الخاصة.







الحي
NEIGHBORHOOD

مشروع يرتقي إلى مستوى التوقعات.
ELEVATE *Your* EXPECTATIONS.



Professionals in JAFZA, Jebel Ali Industrial Area, Abu Dhabi, DUBAL or DEWA benefit from ÉLEVÉ's proximity to key business hubs, making commuting a breeze.

يقع المشروع على مقربة من مراكز الأعمال الرئيسية، وإذا كنتم من أصحاب المهن في المنطقة الحرة لجبل علي، أو منطقة جبل علي الصناعية، أو أبوظبي، أو دوبال، أو تبينة كهرباء ومياه دبي لن تجدوا صعوبة في التنقل والتنزه والحصول على قسط من الراحة

خريطة الحي
NEIGHBORHOOD MAP

BUSINESS

1. Jebel Ali Free Zone
2. DP World Headquarters
3. Jebel Ali Industrial Area

ENTERTAINMENT

4. Expo City Dubai
5. Dubai Parks & Resorts
6. Jebel Ali Shooting Club
7. JA The Resort Golf Course

HOSPITALS

8. NMC Royal Hospital
9. Aster Cedars Hospita
10. Community Healthcare
11. Mediclinic Ibn Battuta

SHOPPING

12. Jebel Ali Mall
13. Ibn Battuta Mall
14. The Outlet Village

FAITH

15. Jebel Ali Church
16. Masjid Al Rahman
17. Guru Nanak Darbar

GROCERIES

18. Carefour Ibn Battuta
19. Choithrams DIP
20. Nesto Hypermarket

PARKS

21. Dubai Parks Creek
22. Jebel Ali Gardens

PORTS

23. Al Maktoum Int. Airport
24. Port Jebel Ali

Step outside and revel in convenience – The Outlet Mall by Meraas, Ibn Battuta Mall, and Dubai Marina Mall are all within easy reach. Explore the Dubai Parks & Resorts, Expo and DWC just a short drive away and unwind at the shores of Palm Jebel Ali & The Waterfront, a mere 12-minute drive away.

وبذلك ستصلون بسهولة إلى أوتليت مول من مراس، وابن بطوطة مول، وديبي مارينا مول المتواجد على مقربة منكم. وإذا أرتبتم التنقل بالسيارة فما عليكم سوى قطع مسافة قصيرة للتجول في دبي باركس أندريزورتس، وإكسبو ومطار آل مكتوم الدولي، والاسترخاء على شواطئ نخلة جبل علي والواجهة البحرية، التي تبعد عنكم بمسافة 12 دقيقة بالسيارة فقط



التنقل والوصول
CONNECTIVITY

مشروعٌ يقرب كل بعيد.
ELEVATE *Your* REACH.

CONNECTED TO
EVERYTHING THAT MATTERS.

ÉLEVÉ puts you at the heart of it all, seamlessly connected to Dubai and Abu Dhabi via Sheikh Zayed Road. Palm Jebel Ali, The Waterfront, JAFZA, Jebel Ali Industrial Area, and Fortune 500 giants like FedEx, LG, Nestle, and Mercedes are accessible in minutes.

كل ما تحتاجونه
على بعد خطوات.

يقع ÉLEVÉ على مقربة من كافة المناطق الحيوية في دبي، حيث يمكن التنقل بسهولة والوصول منه إلى دبي، وأبو ظبي عبر شارع الشيخ زايد. ونخلة جبل علي، والوجهة البحرية، والمنطقة الحرة لجبل علي، ومنطقة جبل علي الصناعية، وإلى الشركات العملاقة المدرجة على مؤشر فورتمن 500 مثل فيديكس، وإل جي، ونستله، ومرسيدس التي تبعد عنكم بدقائق محدودة

Imagine the freedom of a short commute, leaving you more time for what truly matters – pursuing your dreams or simply enjoying the serenity of your ÉLEVÉ haven.

لم تعد حرية التنقل بسرعة ضرباً من الخيال، وبالتالي لن يضيع وقتكم سدىً وسيكون لديكم متسعٌ من الوقت للانفعال بما تحبونه، أو التفرغ لتحقيق أحلامكم، أو الاستمتاع بالسكينة في ملاذكم الهادئ في إيبي.



BUSINESS

- 1. Dubai World Trade Center
- 2. Jumeirah Lake Towers
- 3. Dubai Marina & JBR

ENTERTAINMENT

- 4. Jebel Ali Racecourse
- 5. Dubai Parks & Resorts
- 6. JA Resort
- 7. IMG Worlds of Adventure
- 8. Wild Wadi Waterpark
- 9. EXPO CITY DUBAI
- 10. Dubai Eye

HOSPITALS

- 11. Saudi German Hospital
- 12. Al Zahra Hospital Dubai
- 13. Dubai London Hospital

SHOPPING

- 14. The Dubai Mall
- 15. Ibn Battuta Mall
- 16. Dubai Marina Mall
- 17. The Outlet Village

RESTAURANTS

- 21. Gazebo Restaurant
- 22. The Junction
- 23. P.F Changs

BEACHES

- 24. Kite Beach
- 25. Jebel Ali beach

PORTS

- 29. Al Maktoum Int. Airport
- 30. Port Jebel Ali

SCHOOLS

- 18. GEMS Wellington Int. School
- 19. JSS International School
- 20. Dubai Int. Academy

FAITH

- 26. Masjid Al Noor
- 27. Guru Nanak Darbar
- 28. Jebel Ali Church

PARKS

- 31. Al Barsha Pond Park
- 32. Dubai Miracle Garden

خريطة الوصول

CONNECTIVITY MAP

C.

المرافق
LIFESTYLE AND
AMENITIES
ووسائل الراحة

ÉLEVÉ IS YOUR
GATEWAY TO

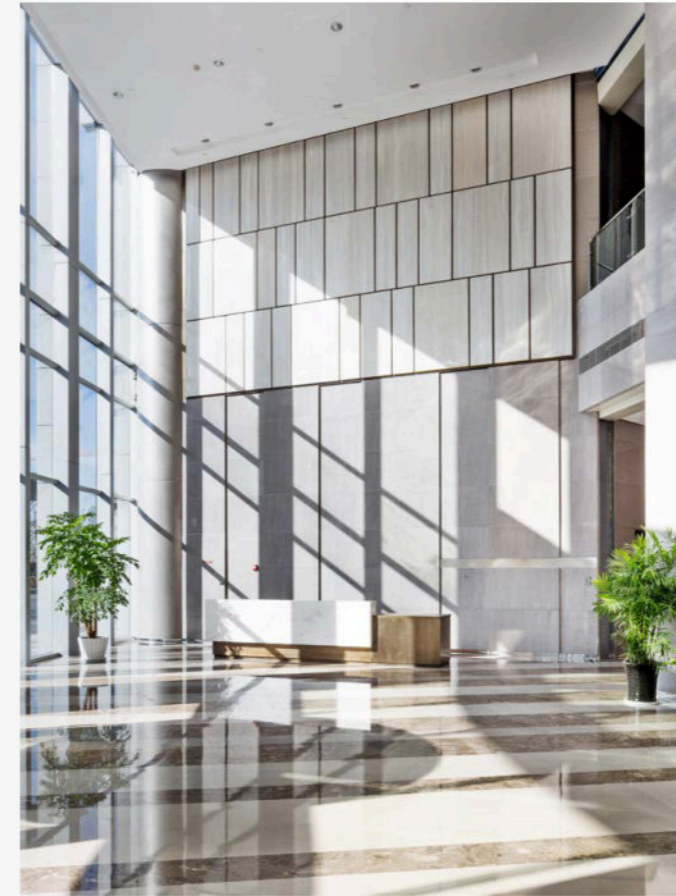
A WORLD OF
BOUNDLESS POSSIBILITIES.

اليفي هو بوابتكم إلى عالم من
المزايا التي لا حدود لها.



الردحة والبهو

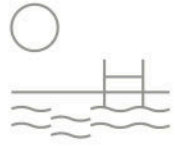
LOBBY AND LOUNGE



ÉLEVÉ guarantees an exceptional living experience with thoughtfully curated world-class amenities. The grand portecochère, a masterpiece of understated elegance and streamlined design, welcomes you with a seamless drop-off. Step into the lobby, a haven of soft hues, beautiful aesthetics, and natural light. Adorned with ample plush seating, soft hues, , the lobby provides the perfect space for guests to connect and socialize in luxury.

سيستمتع السكان في اليفي بتجربة حياة لم يسبق لها مثيل لما يحتويه من وسائل راحة مصممة بعناية فائقة على الطراز العالمي. وبمجرد وصولكم إلى المدخل الرئيسي الذي يشكل تحفة فنية بتصميمه الانسيابي الأنيق والعصري، يمكنكم الدخول منه بسهولة نظراً لاتساعه. وبعد الخروج منه، ستجدون أمامكم البهو المزين بمزيج من الألوان الجذابة، والقطع الفنية الجميلة وأمعة الشمس التي تضيء المكان. ويشكل البهو لما يحتويه من مقاعد فخمة واسعة، وألوان متناغمة مساحة مثالية للضيوف للتواصل مع بعضهم البعض في محيط يغلب عليه طابع الفخامة





حوض السباحة وحوض
السباحة المخصص للأطفال

POOL & KIDS POOL



Immerse yourself in sheer delight,
gleaming beneath the Dubai sun, and
witness the pure joy as your kids make
a splash in the refreshing kids' pool.

جربوا شعور السعادة الغامرة، واستمتعوا بشمس
دبي المتلألئة، وبالأجواء المبهجة وأنتم
تنظرون إلى أطفالكم وهم يسبحون في
حمام السباحة المنعش المخصص للأطفال



تريانس النادي
الرياضي واليوغا

GYM & YOGA TERRACE

Ignite your strength, break a sweat,
and discover inner peace – all
against the backdrop of breathtaking
port views.

بمجرد الانشغال بالمناظر الخلابة
للميناء ستتمتعون بممارسة التمارين
الرياضية، والتمرن بجهد، لتكتشفوا
معنى السلام الداخلي

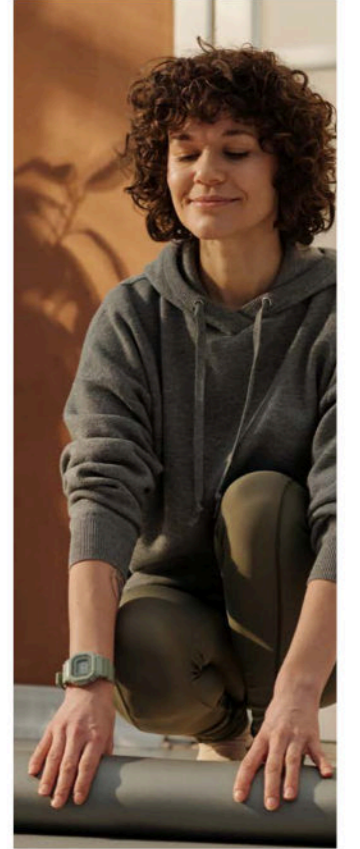
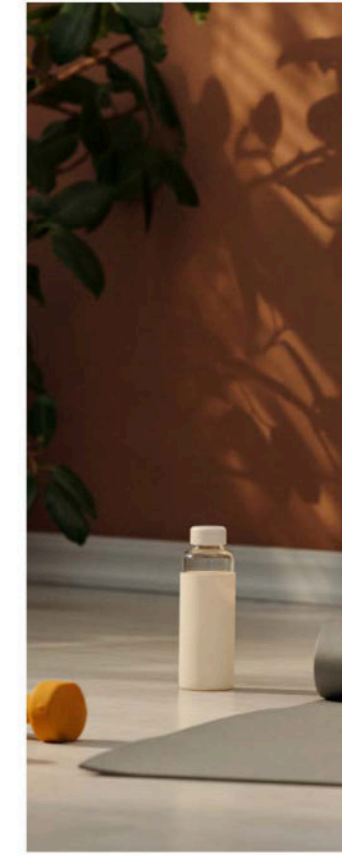


دورات المياه
وغرفة تغيير الملابس

TOILET & CHANGING ROOM

Seamless convenience and comfort
await at exclusive toilet and changing
room amenities by the pool.

تم تصميم مرافق دورات المياه وغرفة تغيير
الملابس على مقربة من حوض السباحة
لمنحكم الشعور بالراحة والسكينة







صالة المسكن
RESIDENCE LOUNGE

Meet and unwind with loved ones in your private haven for connection and relaxation at the resident's lounge.

تعتبر الرديئة المخصصة في البرج المكان الأمثل للاجتماع مع أحبائكم وتعزيز أواصر التواصل مع الاستمتاع بأجواء الراحة والسكينة



غرفة النادي
وغرفة الأنشطة الرياضية
CLUB ROOM & SPORT
ACTIVITIES ROOM

From billiards battles to team cheers, the club room and sports retreat pulse with the thrill of competition and the joy of camaraderie.

تنبض غرف النادي و الأنشطة الرياضية بأجواء مفعمة بالحيوية يمكنكم فيها الاستمتاع بلعب البلياردو، وتمجيع فرقكم المفضلة، والشعور بمتعة المنافسة وفرحة الصداقة الحميمة



المناطق المشتركة
والمناطق الخاصة
COMMUNAL AND
PRIVATE AREAS

Adorned with subtle colors, minimal design, wooden accents, and natural light, the communal and private areas are crafted with warmth and urban sophistication.

تكتسي المساحات المشتركة والخاصة بألوان فائقة الجمال، وتصميم بسيط، ولمسات فنية خفية، كما يعلو بنا ضوء طبيعي لتعكس بذلك المظهر الحضاري للمدينة

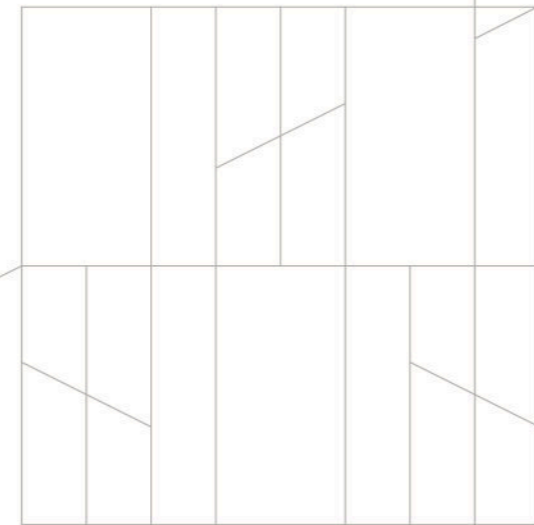


المساحات الخارجية
المخصصة للجلوس

OUTDOOR SEATING AREA

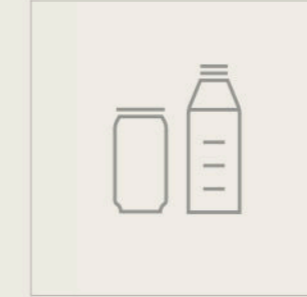
Elevate your outdoor bliss—crafted for shared moments and personal retreats. With ample seating, you'll have ample time for quiet contemplation or reading your favorite book.

يمكن لأولئك الباحثين عن ملاذ لقضاء الوقت مع الأحبة والهروب من صخب الحياة الاستمتاع بالمساحات الخارجية الفسيحة التي تم تصميمها بعناية فائقة، وبما تحتويه من مقاعد واسعة تتيح لكم حيزاً من الوقت للتأمل بهدوء أو قراءة كتابكم المفضل.



المزيد من وسائل الراحة المصممة خصيصاً لراحتكم.

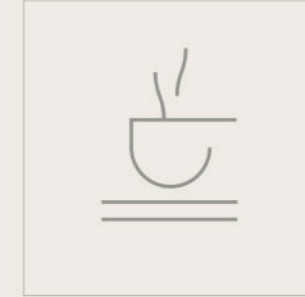
UNMATCHED COMFORT. MORE TAILORED AMENITIES.



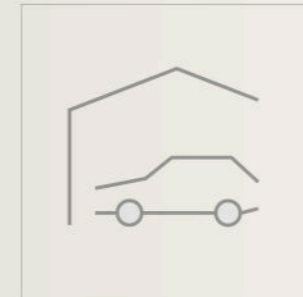
Grocery Store



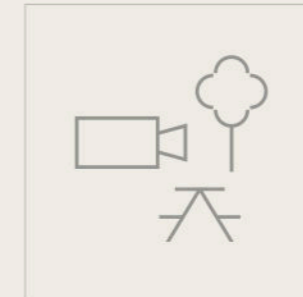
Restaurant



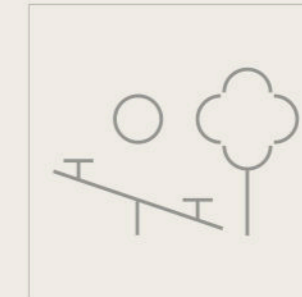
Café



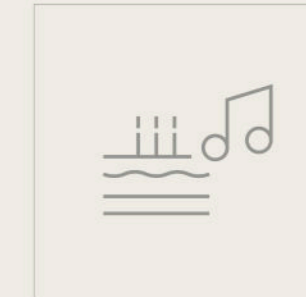
Porte Cochère



Outdoor Cinema



Outdoor Play Area



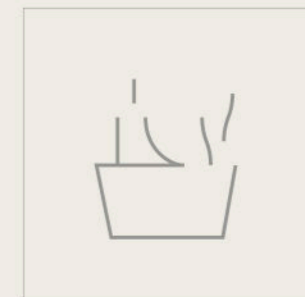
Event Lawn



Drop-off



Sauna & Steam Room



Jacuzzi

المساكن
RESIDENCES

ملاذُ يلائم كافة الأذواق
ELEVATE *Your* SANCTUARY.



مساكنٌ بتصميمٍ فائق الجمال
BEAUTIFULLY-APPOINTED
RESIDENCES.

Step into sun-drenched residences adorned with timber accents, where earthy tones and clean lines welcome. The earthy components, clean aesthetics, subdued simplicity, and light-filled interiors create a wonderful sense of home.

Each residence offers serene views of the Jebel Ali port, fostering an enriching life. With a focus on spaciousness, architectural form, and muted tones, ÉLEVÉ promises an unmatched living experience.

يمكن لنور الشمس الدخول إلى المساكن المزينة بلمسات فنية خشبية، والتي تعلوها ألوانٌ ترابية وخطوط براقية. في حين تعيد المكونات الترابية والقطع الفنية الرائعة، والبساطة والهدوء إلى جانب التصميمات الداخلية الزلخرة بالأضواء تعريف معنى الحياة.

يملك كل مسكنٍ إطلالات على المناظر الخلابة في ميناء جبل علي، ما يعزز شعورك بالحياة الفاخرة. لذلك يعدكم اليقي بتجربة حياة لا مثل لها تركز على المساحات الرحبة، والتصميم المعماري، والألوان الباعثة على الاسترخاء



التصميم الداخلي
INTERIORS

الحياة الراقية بأبهى صورها. ELEVATE *Your* STYLE.

ÉLEVÉ's interiors are adorned with ample natural light and restrained color palettes, complemented by carefully selected natural materials in the apartments.

تزدهو التصميمات الداخلية في اليفي بضوء طبيعي وافر ولوحات ملونة بألوان فائقة الروعة، يزيد من جمالها المواد الطبيعية المختارة بعناية في الشقق.

تصاميم داخلية بغاية الأناقة

INTERIORS WITH
CHIC DESIGN.

This thoughtful design invites you to connect with delicate forms and textures throughout the space.

يدعوكم هذا التصميم المبتكر إلى التفاعل مع القطع الفنية والزخارف المتميزة المنتشرة في كافة أرجاء المكان.





غرفة المعيشة
LIVING ROOM

تجارب جديدة في كل يوم.
ELEVATE *Your* EVERYDAY.



Clean aesthetics take center stage in the living room, creating an atmosphere of refined simplicity. The minimalist design is showcased through carefully selected furnishings and uncluttered spaces. Every element contributes to a harmonious balance, allowing the room to exude modern elegance and inviting comfort.

تضفي التحف الفنية التي تتخذ من وسط غرفة المعيشة مكاناً لها جواً من البساطة والرفق. ينعكس التصميم البسيط على المفرومات المختارة بعناية والمساحات المرتبة بغاية الأناقة. ويساهم كل عنصر منها في تحقيق توازن متناغم، يضفي على الغرفة طابع الأناقة العصرية المفعمة بالرحلة

غرف النوم
BEDROOMS

إبداع يتجاوز حدود المألوف.
ELEVATE *Your* ORDINARY.



The bedroom embodies a subtle elegance for a serene sanctuary. Clean aesthetics and simple yet sophisticated decor create a tranquil, clutter-free atmosphere.

تجسد غرفة النوم الأناقة بأسمى معانيها وتوفر ملاذاً مفعماً بالهدوء. في حين تضفي القطع الفنية الرائعة والديكور البسيط والمتقن أجواءً تادئة تخلق مما يعكس صفوكم



المطابخ
KITCHENS

تجارب طهي جديدة بانتظاركم.
ELEVATE *Your* CULINARY EXPERIENCE.

Indulge in joyous moments in superbly crafted kitchens with a range of exquisite finishes for discerning tastes. Transform it into a culinary haven with a hood, oven, and hob, crafting unforgettable masterpieces with every bite.

تم تصميم المطابخ بحرفية عالية بمجموعة من التشطيبات الرائعة لأصحاب الذوق الرفيع لتشعركم بدفء اللحظات السعيدة. تم تجهيز ركن الطهي بشفاط، وفرن وموقد ستعبرون بروعتها مع كل وجبة طعام.







الحمّامات
BATHROOMS

نمط حياةٍ بأسلوبٍ عصري.
ELEVATE *Your* RITUALS.

Fitted with exquisite finishes, these contemporary sanctuaries are tailored to enhance your rituals, providing a space to refresh and recharge.

تم تجهيز الحمّامات بتشطيبات رائعة وأسلوب عصري لمساعدتكم في تحسين نمط حياتكم اليومي وتوفير مساحةٍ لكم للشعور بالحيوية والنشاط.



E.
ECONOMICS

DEYAAAR

دييار

ديار رائدة المعايير الجديدة.
ELEVATE *Your STANDARDS with DEYAAR.*



Deyaar has shaped Dubai's real estate with landmark projects for two decades, delivering over 20 million sq. ft. of developments since 2002. We boast stellar commercial towers, remarkable residences, and outstanding hotels in Dubai's prime locations, from Business Bay to DIFC, Dubai Marina to Jumeirah Lake Towers. Recent projects include Regalia, MarCasa, Central Park Towers, and MidTown master-planned development.

سأتمت شركة ديار في تطوير وتشكيل القطاع العقاري في دبي من خلال مشاريع بارزة على مدى عقدين من الزمن، حيث نفذت أكثر من 20 مليون قدم مربع من المشاريع التطويرية منذ عام 2002. ونحن نفتخر بإنشائنا العديد من الأبراج التجارية المتميزة، والوحدات السكنية الرائعة، والفنادق الفخمة في مواقع رئيسية في مختلف أنحاء دبي، من الخليج التجاري إلى مركز دبي المالي العالمي، وصولاً إلى دبي مارينا، وأبراج بحيرة الجميرا. وتشمل مشاريعنا الأخيرة أبراج سنترال بارك، وريجاليا، وماركاسا، ومشروع تطوير ميدتاون.





REGALIA by Deyaar
ريجاليا من ديار

شركة التطوير الرائدة في مدينة دبي.
DUBAI'S PREMIER DEVELOPER.

We branched into diverse service offerings divided into six business units: Property Development, Property Management, Facilities Management, Community Management, Hospitality, and Asset Management. These divisions provide multipurpose property services, accentuating Deyaar's appeal and stature within the real estate industry.

نوفر حالياً مجموعة واسعة من الخدمات المتخصصة من خلال ست وحدات عمل تشمل: التطوير العقاري، وإدارة الممتلكات، وإدارة المرافق، وإدارة المجتمعات، والضيافة، وإدارة الأصول. وتقدم هذه الأقسام خدمات عقارية شاملة ومتنوعة، مما يساهم في تعزيز مكانة شركة ديار وترسيخ خبرتها في قطاع العقارات.

Leveraging our expertise and financial expertise, we shape Dubai's built environment, unlocking potential and creating enduring value for investors. With a robust land bank, diverse projects, and a future-focused vision, Deyaar continues to ascend.

ونساهم اليوم من خلال خبرتنا المالية والعقارية في تمكين وتطوير المشهد العمراني في دبي، وفتح آفاق جديدة وخلق قيمة مستدامة للمستثمرين، كما تستمر شركة ديار في التطور والريادة في القطاع بفضل مخزونها القوي من الأراضي، ومشاريعها المتنوعة، ورؤيتها المستقبلية الطموحة.

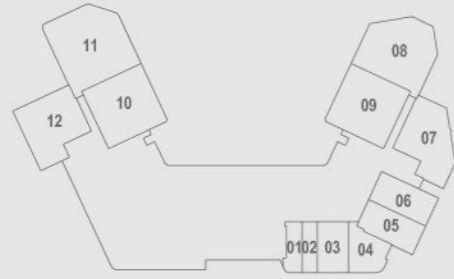


F.

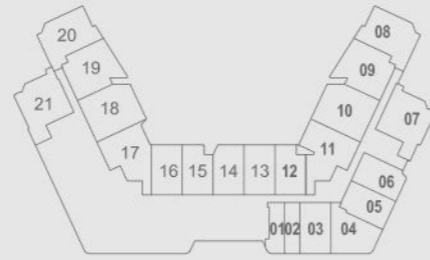
مخططات

الطابق السابق FLOORPLANS

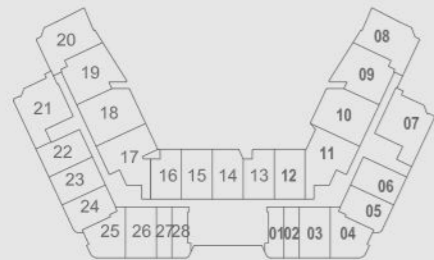
PROJECT KEYPLANS



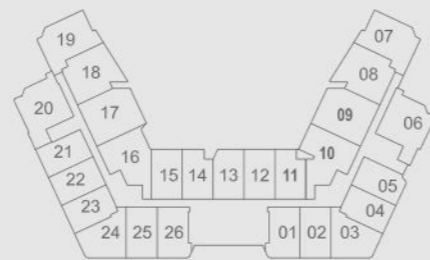
1ST FLOOR



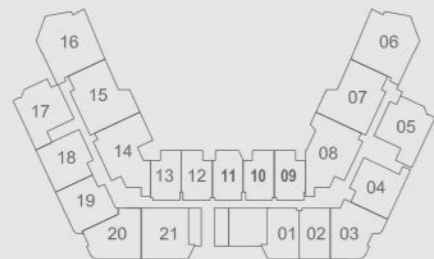
2ND FLOOR



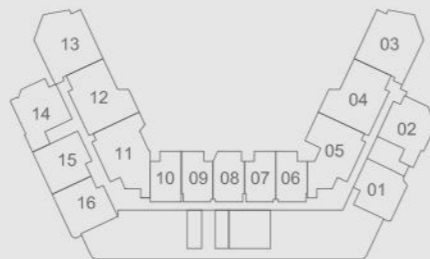
3RD-17TH TYP. FLOORS



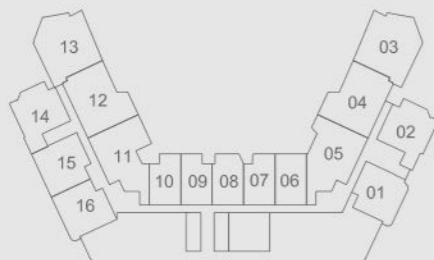
18TH-24TH TYP. FLOORS



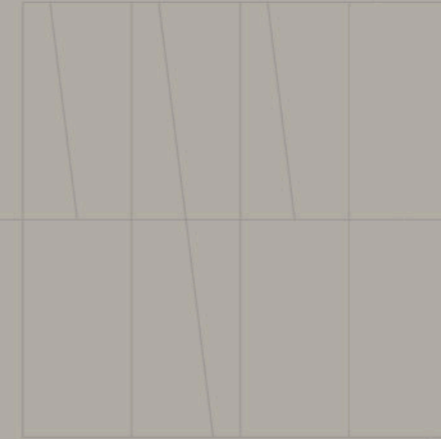
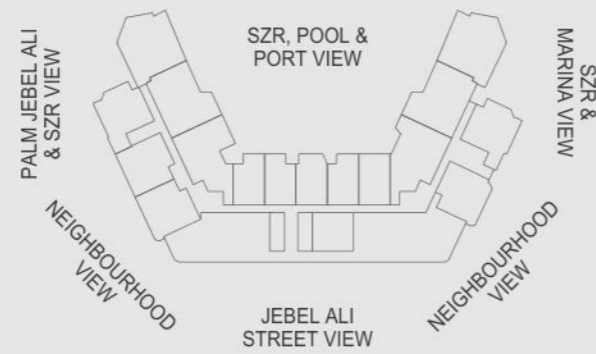
25TH-31ST TYP. FLOORS



32ND FLOOR



33RD FLOOR



FLOORPLANS – Studio –

ÉLEVÉ
BY DEYAAR

STUDIO APARTMENT

1A

AREA

INTERNAL AREA : 341 ft²

BALCONY AREA : 83 ft²

TOTAL AREA : 424 ft²

FLAT 1 @ 1ST FLOOR

FLAT 1 @ 2ND FLOOR

FLAT 1, FLAT 28 @ 3RD-17TH TYP. FLOORS

All materials dimensions, and drawings are approximate only. Information is subject to change without notice at developer's absolute discretion. Actual area may vary from the stated area. Drawings not to scale. All images used are for illustrative purposes only and do not represent the actual size, features, specifications, fittings and furnishings. The developer reserves the right to make revisions or alterations, at its absolute discretion, without any liability whatsoever. Key Plans are approximate and symbolic.

ÉLEVÉ
BY DEYAAR

STUDIO APARTMENT

1B

AREA

INTERNAL AREA : 337 ft²

BALCONY AREA : 72 ft²

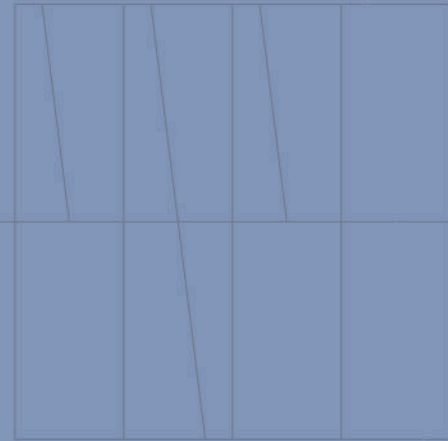
TOTAL AREA : 409 ft²

FLAT 2 @ 1ST FLOOR

FLAT 2 @ 2ND FLOOR

FLAT 2, FLAT 27 @ 3RD-17TH TYP. FLOORS

All materials dimensions, and drawings are approximate only. Information is subject to change without notice at developer's absolute discretion. Actual area may vary from the stated area. Drawings not to scale. All images used are for illustrative purposes only and do not represent the actual size, features, specifications, fittings and furnishings. The developer reserves the right to make revisions or alterations, at its absolute discretion, without any liability whatsoever. Key Plans are approximate and symbolic.



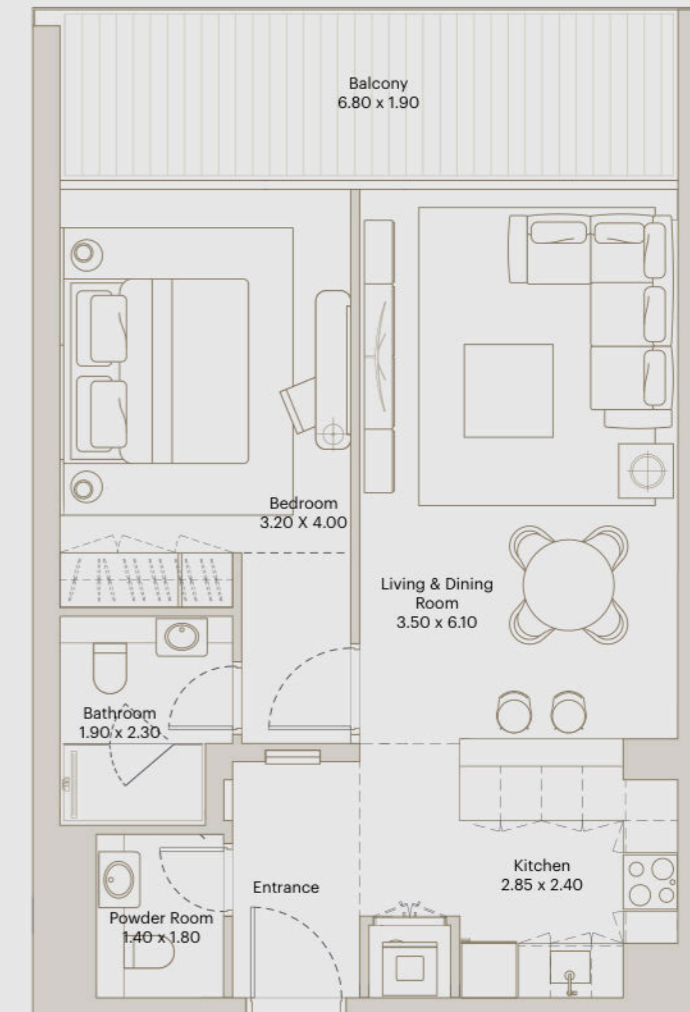
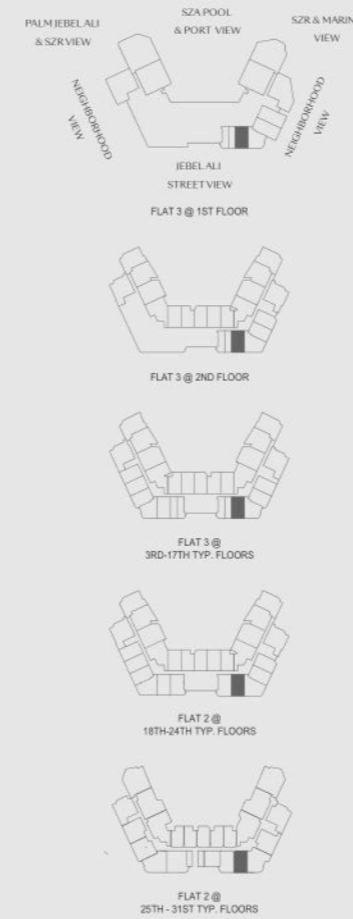
FLOORPLANS
- 1 Bedroom -

ÉLEVÉ
BY DEYAAR

1 BR
APARTMENT

1A

AREA
INTERNAL AREA : 679 ft²
BALCONY AREA : 145 ft²
TOTAL AREA : 824 ft²



دييار
DEYAAR

All materials dimensions, and drawings are approximate only. Information is subject to change without notice at developer's absolute discretion. Actual area may vary from the stated area. Drawings not to scale. All images used are for illustrative purposes only and do not represent the actual size, features, specifications, fittings and furnishings. The developer reserves the right to make revisions or alterations, at its absolute discretion, without any liability whatsoever. Key Plans are approximate and symbolic.

ÉLEVÉ
BY DEYAAR

1 BR
APARTMENT

1B

AREA

INTERNAL AREA : 679 ft²

BALCONY AREA : 84 ft²

TOTAL AREA : 763 ft²

All materials dimensions, and drawings are approximate only. Information is subject to change without notice at developer's absolute discretion. Actual area may vary from the stated area. Drawings not to scale. All images used are for illustrative purposes only and do not represent the actual size, features, specifications, fittings and furnishings. The developer reserves the right to make revisions or alterations, at its absolute discretion, without any liability whatsoever. Key Plans are approximate and symbolic.

ÉLEVÉ
BY DEYAAR

1 BR
APARTMENT

1C

AREA

INTERNAL AREA : 676 ft²

BALCONY AREA : 114 ft²

TOTAL AREA : 791 ft²

All materials dimensions, and drawings are approximate only. Information is subject to change without notice at developer's absolute discretion. Actual area may vary from the stated area. Drawings not to scale. All images used are for illustrative purposes only and do not represent the actual size, features, specifications, fittings and furnishings. The developer reserves the right to make revisions or alterations, at its absolute discretion, without any liability whatsoever. Key Plans are approximate and symbolic.

ÉLEVÉ
BY DEYAAR

**1 BR
APARTMENT**

1D

AREA

INTERNAL AREA: 678 ft²

BALCONY AREA: 87 ft²

TOTAL AREA: 766 ft²

All materials, dimensions, and drawings are approximate only. Information is subject to change without notice at developer's absolute discretion. Actual area may vary from the stated area. Drawings not to scale. All images used are for illustrative purposes only and do not represent the actual size, features, specifications, fittings and furnishings. The developer reserves the right to make revisions or alterations, at its absolute discretion, without any liability whatsoever. Key Plans are approximate and symbolic.

ÉLEVÉ
BY DEYAAR

**1 BR
APARTMENT**

1E

AREA

INTERNAL AREA: 679 ft²

BALCONY AREA: 119 ft²

TOTAL AREA: 798 ft²

All materials, dimensions, and drawings are approximate only. Information is subject to change without notice at developer's absolute discretion. Actual area may vary from the stated area. Drawings not to scale. All images used are for illustrative purposes only and do not represent the actual size, features, specifications, fittings and furnishings. The developer reserves the right to make revisions or alterations, at its absolute discretion, without any liability whatsoever. Key Plans are approximate and symbolic.

ÉLEVÉ
BY DEYAAR

**1 BR
APARTMENT**

1F

AREA

INTERNAL AREA : 679 ft²

BALCONY AREA : 121 ft²

TOTAL AREA : 800 ft²

All materials, dimensions, and drawings are approximate only. Information is subject to change without notice at developer's absolute discretion. Actual area may vary from the stated area. Drawings not to scale. All images used are for illustrative purposes only and do not represent the actual size, features, specifications, fittings and furnishings. The developer reserves the right to make revisions or alterations, at its absolute discretion, without any liability whatsoever. Key Plans are approximate and symbolic.

ÉLEVÉ
BY DEYAAR

**1 BR
APARTMENT**

1G

AREA

INTERNAL AREA : 679 ft²

BALCONY AREA : 119 ft²

TOTAL AREA : 798 ft²

All materials, dimensions, and drawings are approximate only. Information is subject to change without notice at developer's absolute discretion. Actual area may vary from the stated area. Drawings not to scale. All images used are for illustrative purposes only and do not represent the actual size, features, specifications, fittings and furnishings. The developer reserves the right to make revisions or alterations, at its absolute discretion, without any liability whatsoever. Key Plans are approximate and symbolic.

ÉLEVÉ
BY DEYAAR

1 BR
APARTMENT

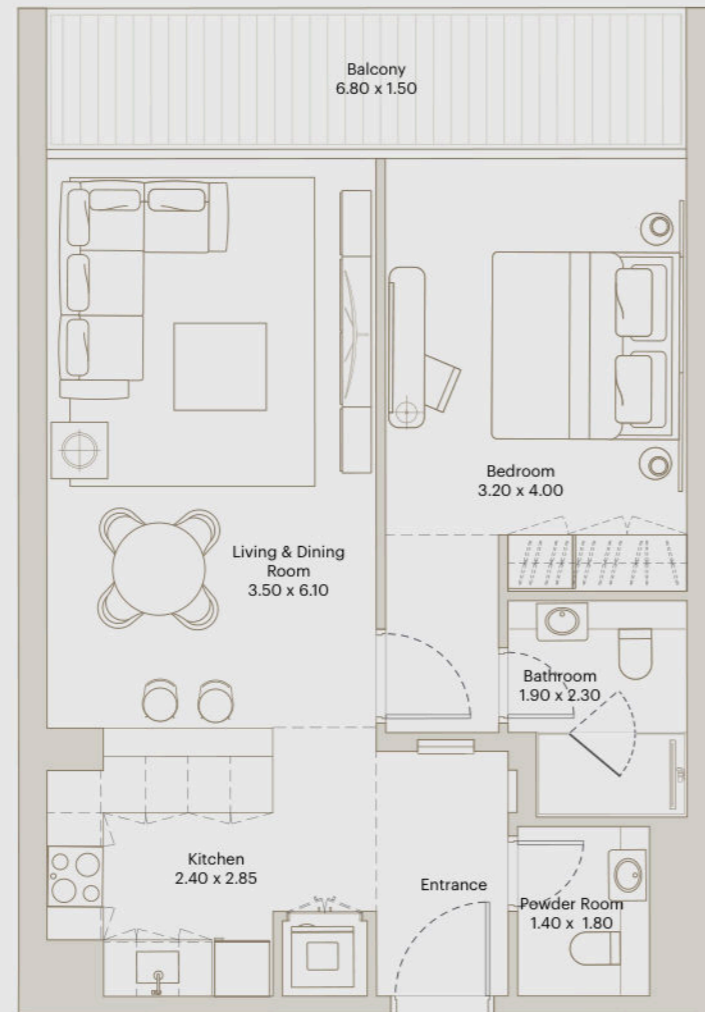
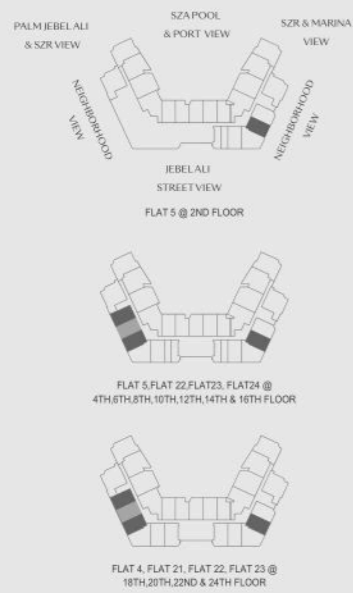
1H

AREA

INTERNAL AREA : 679 ft²

BALCONY AREA : 117 ft²

TOTAL AREA : 796 ft²



All materials, dimensions, and drawings are approximate only. Information is subject to change without notice at developer's absolute discretion. Actual area may vary from the stated area. Drawings not to scale. All images used are for illustrative purposes only and do not represent the actual size, features, specifications, fittings and furnishings. The developer reserves the right to make revisions or alterations, at its absolute discretion, without any liability whatsoever. Key Plans are approximate and symbolic.

ÉLEVÉ
BY DEYAAR

1 BR
APARTMENT

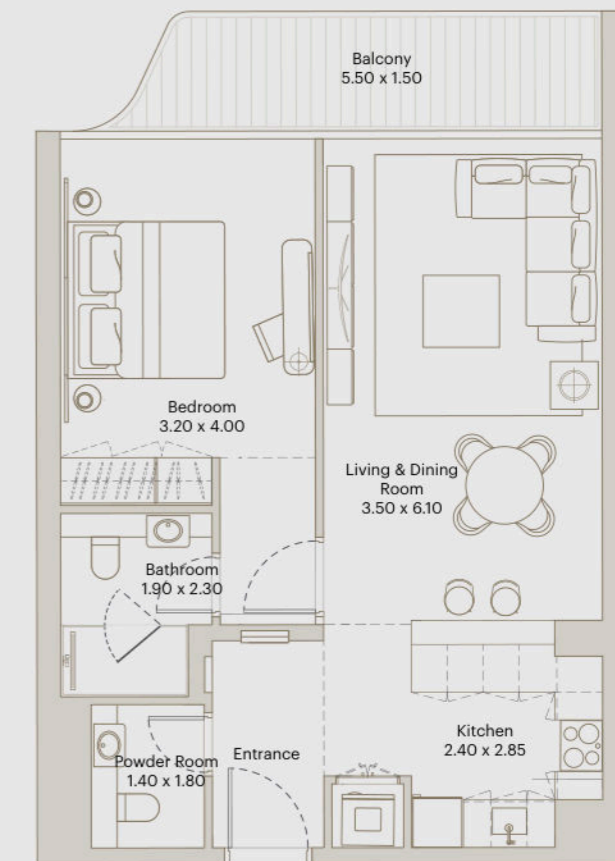
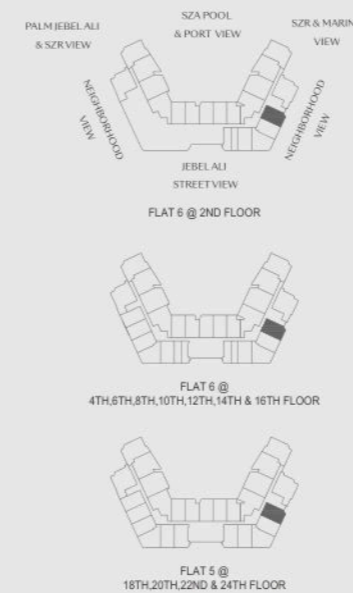
1I

AREA

INTERNAL AREA : 676 ft²

BALCONY AREA : 95 ft²

TOTAL AREA : 771 ft²



All materials, dimensions, and drawings are approximate only. Information is subject to change without notice at developer's absolute discretion. Actual area may vary from the stated area. Drawings not to scale. All images used are for illustrative purposes only and do not represent the actual size, features, specifications, fittings and furnishings. The developer reserves the right to make revisions or alterations, at its absolute discretion, without any liability whatsoever. Key Plans are approximate and symbolic.

ÉLEVÉ
BY DEYAAR

**1 BR
APARTMENT**

1J

AREA

INTERNAL AREA : 679 ft²

BALCONY AREA : 121 ft²

TOTAL AREA : 800 ft²

FLAT 14 @ 2ND FLOOR

FLAT 14 @ 4TH, 6TH, 8TH, 10TH, 12TH, 14TH & 16TH FLOOR

FLAT 13 @ 18TH, 20TH, 22ND & 24TH FLOOR

FLAT 11 @ 26TH, 28TH, 30TH FLOOR

FLAT 08 @ 32ND FLOOR

All materials, dimensions, and drawings are approximate only. Information is subject to change without notice at developer's absolute discretion. Actual area may vary from the stated area. Drawings not to scale. All images used are for illustrative purposes only and do not represent the actual size, features, specifications, fittings and furnishings. The developer reserves the right to make revisions or alterations, at its absolute discretion, without any liability whatsoever. Key Plans are approximate and symbolic.

ÉLEVÉ
BY DEYAAR

**1 BR
APARTMENT**

1K

AREA

INTERNAL AREA : 682 ft²

BALCONY AREA : 156 ft²

TOTAL AREA : 837 ft²

FLAT 1, FLAT 26 @ 18TH-24TH TYP. FLOORS

FLAT 1 @ 25TH - 31ST TYP. FLOORS

All materials, dimensions, and drawings are approximate only. Information is subject to change without notice at developer's absolute discretion. Actual area may vary from the stated area. Drawings not to scale. All images used are for illustrative purposes only and do not represent the actual size, features, specifications, fittings and furnishings. The developer reserves the right to make revisions or alterations, at its absolute discretion, without any liability whatsoever. Key Plans are approximate and symbolic.

ÉLEVÉ
BY DEYAAR

1 BR GARDEN APARTMENT

1L

AREA

INTERNAL AREA : 678 ft²

BALCONY AREA : 381 ft²

TOTAL AREA : 1059 ft²

All materials dimensions, and drawings are approximate only. Information is subject to change without notice at developer's absolute discretion. Actual area may vary from the stated area. Drawings not to scale. All images used are for illustrative purposes only and do not represent the actual size, features, specifications, fittings and furnishings. The developer reserves the right to make revisions or alterations, at its absolute discretion, without any liability whatsoever. Key Plans are approximate and symbolic.

ÉLEVÉ
BY DEYAAR

1 BR APARTMENT

2A

AREA

INTERNAL AREA : 677 ft²

BALCONY AREA : 73 ft²

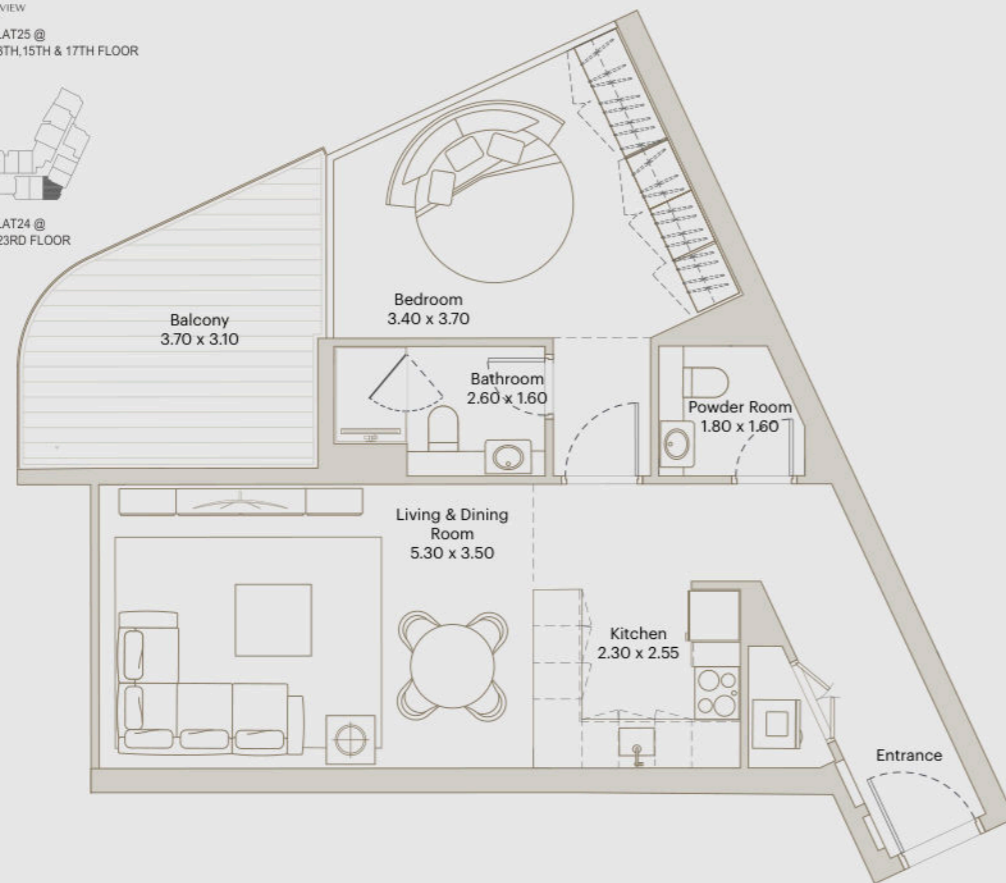
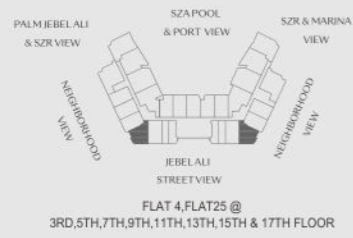
TOTAL AREA : 750 ft²

All materials dimensions, and drawings are approximate only. Information is subject to change without notice at developer's absolute discretion. Actual area may vary from the stated area. Drawings not to scale. All images used are for illustrative purposes only and do not represent the actual size, features, specifications, fittings and furnishings. The developer reserves the right to make revisions or alterations, at its absolute discretion, without any liability whatsoever. Key Plans are approximate and symbolic.

ÉLEVÉ
BY DEYAAR

1 BR
APARTMENT
3A

AREA
INTERNAL AREA : 681 ft ²
BALCONY AREA : 128 ft ²
TOTAL AREA : 809 ft ²

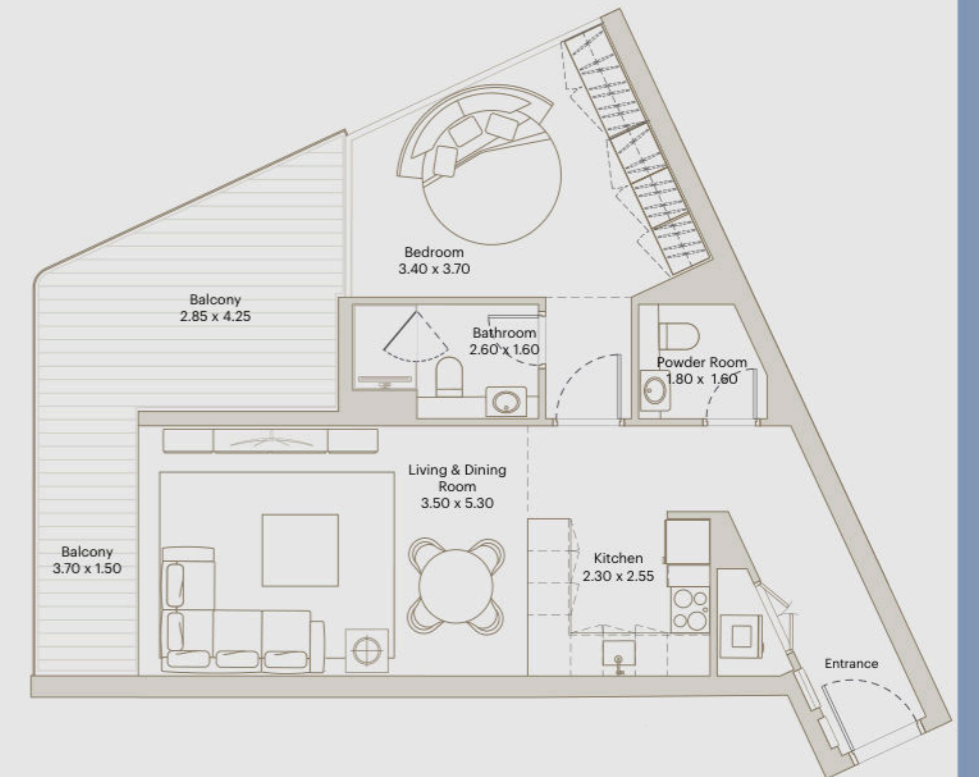
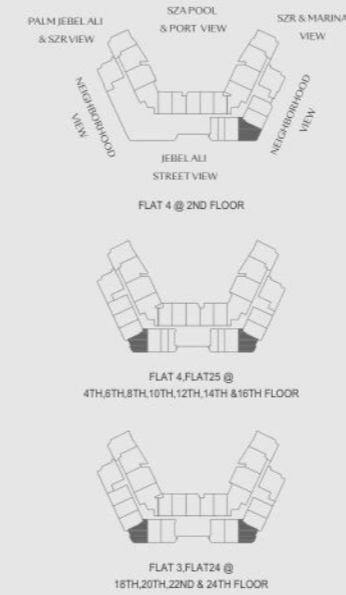


All materials, dimensions, and drawings are approximate only. Information is subject to change without notice at developer's absolute discretion. Actual area may vary from the stated area. Drawings not to scale. All images used are for illustrative purposes only and do not represent the actual size, features, specifications, fittings and furnishings. The developer reserves the right to make revisions or alterations, at its absolute discretion, without any liability whatsoever. Key Plans are approximate and symbolic.

ÉLEVÉ
BY DEYAAR

1 BR
APARTMENT
3B

AREA
INTERNAL AREA : 681 ft ²
BALCONY AREA : 204 ft ²
TOTAL AREA : 885 ft ²



All materials, dimensions, and drawings are approximate only. Information is subject to change without notice at developer's absolute discretion. Actual area may vary from the stated area. Drawings not to scale. All images used are for illustrative purposes only and do not represent the actual size, features, specifications, fittings and furnishings. The developer reserves the right to make revisions or alterations, at its absolute discretion, without any liability whatsoever. Key Plans are approximate and symbolic.

ÉLEVÉ
BY DEYAAR

**1 BR
APARTMENT**

3C

AREA

INTERNAL AREA: 681 ft²

BALCONY AREA: 366 ft²

TOTAL AREA: 1047 ft²

FLAT 4 @ 1ST FLOOR

All materials, dimensions, and drawings are approximate only. Information is subject to change without notice at developer's absolute discretion. Actual area may vary from the stated area. Drawings not to scale. All images used are for illustrative purposes only and do not represent the actual size, features, specifications, fittings and furnishings. The developer reserves the right to make revisions or alterations, at its absolute discretion, without any liability whatsoever. Key Plans are approximate and symbolic.



FLOORPLANS
– Two Bedrooms –

E L E V É
2 BR APARTMENT
1A

AREA

INTERNAL AREA : 1019 ft²

BALCONY AREA : 142 ft²

TOTAL AREA : 1162 ft²

FLAT 7, FLAT 21 @ 2ND FLOOR

FLAT 7, FLAT 21 @ 3RD-17TH TYP. FLOORS

FLAT 8, FLAT 20 @ 18TH-24TH TYP. FLOOR

FLAT 5, FLAT 17 @ 25TH-31ST TYP. FLOORS

FLAT 02, FLAT 14 @ 32ND-33RD FLOOR

All materials, dimensions, and drawings are approximate only. Information is subject to change without notice at developer's absolute discretion. Actual area may vary from the stated area. Drawings not to scale. All images used are for illustrative purposes only and do not represent the actual size, features, specifications, fittings and furnishings. The developer reserves the right to make revisions or alterations, at its absolute discretion, without any liability whatsoever. Key Plans are approximate and symbolic.

É L E V É
2 BR GARDEN APARTMENT
1B

BY DEYAAR

AREA

INTERNAL AREA : 1019 ft²

BALCONY AREA : 888 ft²

TOTAL AREA : 1907 ft²

FLAT 12 @ FIRST FLOOR

All materials, dimensions, and drawings are approximate only. Information is subject to change without notice at developer's absolute discretion. Actual area may vary from the stated area. Drawings not to scale. All images used are for illustrative purposes only and do not represent the actual size, features, specifications, fittings and furnishings. The developer reserves the right to make revisions or alterations, at its absolute discretion, without any liability whatsoever. Key Plans are approximate and symbolic.

ÉLEVÉ
BY DEYAAR

2 BR GARDEN APARTMENT

1C

AREA

INTERNAL AREA : 1019 ft²

BALCONY AREA : 763 ft²

TOTAL AREA : 1782 ft²

All materials dimensions, and drawings are approximate only. Information is subject to change without notice at developer's absolute discretion. Actual area may vary from the stated area. Drawings not to scale. All images used are for illustrative purposes only and do not represent the actual size, features, specifications, fittings and furnishings. The developer reserves the right to make revisions or alterations, at its absolute discretion, without any liability whatsoever. Key Plans are approximate and symbolic.

ÉLEVÉ
BY DEYAAR

2 BR APARTMENT

2A

AREA

INTERNAL AREA : 1048 ft²

BALCONY AREA : 105 ft²

TOTAL AREA : 1153 ft²

All materials dimensions, and drawings are approximate only. Information is subject to change without notice at developer's absolute discretion. Actual area may vary from the stated area. Drawings not to scale. All images used are for illustrative purposes only and do not represent the actual size, features, specifications, fittings and furnishings. The developer reserves the right to make revisions or alterations, at its absolute discretion, without any liability whatsoever. Key Plans are approximate and symbolic.

ÉLEVÉ
BY DEYAAR

**2 BR
APARTMENT**

2B

AREA

INTERNAL AREA : 1019 ft²

BALCONY AREA : 105 ft²

TOTAL AREA : 1124 ft²

FLAT 8, FLAT 20 @ 3RD, 5TH, 7TH, 9TH, 11TH, 13TH, 15TH & 17TH FLOOR

FLAT 7, FLAT 19 @ 19TH, 21ST & 23RD FLOOR

All materials, dimensions, and drawings are approximate only. Information is subject to change without notice at developer's absolute discretion. Actual area may vary from the stated area. Drawings not to scale. All images used are for illustrative purposes only and do not represent the actual size, features, specifications, fittings and furnishings. The developer reserves the right to make revisions or alterations, at its absolute discretion, without any liability whatsoever. Key Plans are approximate and symbolic.

ÉLEVÉ
BY DEYAAR

**2 BR
APARTMENT**

3A

AREA

INTERNAL AREA : 1035 ft²

BALCONY AREA : 181 ft²

TOTAL AREA : 1216 ft²

FLAT 9, FLAT 19 @ 3RD, 5TH, 7TH, 9TH, 11TH, 13TH, 15TH & 17TH FLOOR

FLAT 8, FLAT 18 @ 19TH, 21ST & 23RD FLOOR

All materials, dimensions, and drawings are approximate only. Information is subject to change without notice at developer's absolute discretion. Actual area may vary from the stated area. Drawings not to scale. All images used are for illustrative purposes only and do not represent the actual size, features, specifications, fittings and furnishings. The developer reserves the right to make revisions or alterations, at its absolute discretion, without any liability whatsoever. Key Plans are approximate and symbolic.

ÉLEVÉ
BY DEYAAR

**2 BR
APARTMENT**

3B

AREA

INTERNAL AREA : 1020 ft²

BALCONY AREA : 176 ft²

TOTAL AREA : 1196 ft²

All materials, dimensions, and drawings are approximate only. Information is subject to change without notice at developer's absolute discretion. Actual area may vary from the stated area. Drawings not to scale. All images used are for illustrative purposes only and do not represent the actual size, features, specifications, fittings and furnishings. The developer reserves the right to make revisions or alterations, at its absolute discretion, without any liability whatsoever. Key Plans are approximate and symbolic.

ÉLEVÉ
BY DEYAAR

**2 BR
APARTMENT**

3C

AREA

INTERNAL AREA : 1025 ft²

BALCONY AREA : 191 ft²

TOTAL AREA : 1216 ft²

All materials, dimensions, and drawings are approximate only. Information is subject to change without notice at developer's absolute discretion. Actual area may vary from the stated area. Drawings not to scale. All images used are for illustrative purposes only and do not represent the actual size, features, specifications, fittings and furnishings. The developer reserves the right to make revisions or alterations, at its absolute discretion, without any liability whatsoever. Key Plans are approximate and symbolic.

ÉLEVÉ
BY DEYAAR

2 BR
APARTMENT

4A

AREA

INTERNAL AREA : 1048 ft²

BALCONY AREA : 163 ft²

TOTAL AREA : 1212 ft²

FLAT 17 @ 2ND FLOOR

FLAT 11 @ 3RD, 5TH, 7TH, 9TH, 11TH, 13TH, 15TH & 17TH FLOOR

FLAT 17 @ 4TH, 6TH, 8TH, 10TH, 12TH, 14TH & 16TH FLOOR

FLAT 16 @ 18TH, 20TH, 22ND & 24TH FLOOR

FLAT 10 @ 19TH, 21ST & 23RD FLOOR

All materials, dimensions, and drawings are approximate only. Information is subject to change without notice at developer's absolute discretion. Actual area may vary from the stated area. Drawings not to scale. All images used are for illustrative purposes only and do not represent the actual size, features, specifications, fittings and furnishings. The developer reserves the right to make revisions or alterations, at its absolute discretion, without any liability whatsoever. Key Plans are approximate and symbolic.

ÉLEVÉ
BY DEYAAR

2 BR
APARTMENT

4B

AREA

INTERNAL AREA : 1048 ft²

BALCONY AREA : 257 ft²

TOTAL AREA : 1305 ft²

FLAT 11 @ 2ND FLOOR

FLAT 17 @ 3RD, 5TH, 7TH, 9TH, 11TH, 13TH, 15TH & 17TH FLOOR

FLAT 11 @ 4TH, 6TH, 8TH, 10TH, 12TH, 14TH & 16TH FLOOR

FLAT 10 @ 18TH, 20TH, 22ND & 24TH FLOOR

FLAT 16 @ 19TH, 21ST & 23RD FLOOR

All materials, dimensions, and drawings are approximate only. Information is subject to change without notice at developer's absolute discretion. Actual area may vary from the stated area. Drawings not to scale. All images used are for illustrative purposes only and do not represent the actual size, features, specifications, fittings and furnishings. The developer reserves the right to make revisions or alterations, at its absolute discretion, without any liability whatsoever. Key Plans are approximate and symbolic.

ÉLEVÉ
BY DEYAAR

2 BR
APARTMENT

5A

AREA

INTERNAL AREA : 1036 ft²

BALCONY AREA : 68 ft²

TOTAL AREA : 1104 ft²

All materials, dimensions, and drawings are approximate only. Information is subject to change without notice at developer's absolute discretion. Actual area may vary from the stated area. Drawings not to scale. All images used are for illustrative purposes only and do not represent the actual size, features, specifications, fittings and furnishings. The developer reserves the right to make revisions or alterations, at its absolute discretion, without any liability whatsoever. Key Plans are approximate and symbolic.

ÉLEVÉ
BY DEYAAR

2 BR
APARTMENT

5B

AREA

INTERNAL AREA : 1018 ft²

BALCONY AREA : 54 ft²

TOTAL AREA : 1072 ft²

All materials, dimensions, and drawings are approximate only. Information is subject to change without notice at developer's absolute discretion. Actual area may vary from the stated area. Drawings not to scale. All images used are for illustrative purposes only and do not represent the actual size, features, specifications, fittings and furnishings. The developer reserves the right to make revisions or alterations, at its absolute discretion, without any liability whatsoever. Key Plans are approximate and symbolic.

ÉLEVÉ
BY DEYAAR

**2 BR
APARTMENT**

5C

AREA

INTERNAL AREA : 1018 ft²

BALCONY AREA : 86 ft²

TOTAL AREA : 1103 ft²

FLAT 04 @
25TH, 27TH, 29TH & 31ST FLOOR

All materials, dimensions, and drawings are approximate only. Information is subject to change without notice at developer's absolute discretion. Actual area may vary from the stated area. Drawings not to scale. All images used are for illustrative purposes only and do not represent the actual size, features, specifications, fittings and furnishings. The developer reserves the right to make revisions or alterations, at its absolute discretion, without any liability whatsoever. Key Plans are approximate and symbolic.

ÉLEVÉ
BY DEYAAR

**2 BR
APARTMENT**

6A

AREA

INTERNAL AREA : 1029 ft²

BALCONY AREA : 190 ft²

TOTAL AREA : 1219 ft²

FLAT 20 @
25TH, 27TH, 29TH & 31ST FLOOR

All materials, dimensions, and drawings are approximate only. Information is subject to change without notice at developer's absolute discretion. Actual area may vary from the stated area. Drawings not to scale. All images used are for illustrative purposes only and do not represent the actual size, features, specifications, fittings and furnishings. The developer reserves the right to make revisions or alterations, at its absolute discretion, without any liability whatsoever. Key Plans are approximate and symbolic.

ÉLEVÉ
BY DEYAAR

**2 BR
APARTMENT**

6B

AREA

INTERNAL AREA : 1029 ft²

BALCONY AREA : 289 ft²

TOTAL AREA : 1318 ft²

FLAT 20 @
26TH, 28TH, 30TH FLOOR

All materials, dimensions, and drawings are approximate only. Information is subject to change without notice at developer's absolute discretion. Actual area may vary from the stated area. Drawings not to scale. All images used are for illustrative purposes only and do not represent the actual size, features, specifications, fittings and furnishings. The developer reserves the right to make revisions or alterations, at its absolute discretion, without any liability whatsoever. Key Plans are approximate and symbolic.

ÉLEVÉ
BY DEYAAR

**2 BR
APARTMENT**

7A

AREA

INTERNAL AREA : 1023 ft²

BALCONY AREA : 101 ft²

TOTAL AREA : 1124 ft²

FLAT 21 @
25TH - 31ST TYP. FLOORS

All materials, dimensions, and drawings are approximate only. Information is subject to change without notice at developer's absolute discretion. Actual area may vary from the stated area. Drawings not to scale. All images used are for illustrative purposes only and do not represent the actual size, features, specifications, fittings and furnishings. The developer reserves the right to make revisions or alterations, at its absolute discretion, without any liability whatsoever. Key Plans are approximate and symbolic.

ÉLEVÉ
BY DEYAAR

**2 BR
APARTMENT**

8A

AREA

INTERNAL AREA : 1010 ft²

BALCONY AREA : 159 ft²

TOTAL AREA : 1169 ft²

FLAT 03 @
25TH, 27TH, 29TH & 31ST FLOOR

All materials, dimensions, and drawings are approximate only. Information is subject to change without notice at developer's absolute discretion. Actual area may vary from the stated area. Drawings not to scale. All images used are for illustrative purposes only and do not represent the actual size, features, specifications, fittings and furnishings. The developer reserves the right to make revisions or alterations, at its absolute discretion, without any liability whatsoever. Key Plans are approximate and symbolic.

ÉLEVÉ
BY DEYAAR

**2 BR
APARTMENT**

8B

AREA

INTERNAL AREA : 1010 ft²

BALCONY AREA : 276 ft²

TOTAL AREA : 1286 ft²

FLAT 03 @
26TH, 28TH, 30TH FLOOR

All materials, dimensions, and drawings are approximate only. Information is subject to change without notice at developer's absolute discretion. Actual area may vary from the stated area. Drawings not to scale. All images used are for illustrative purposes only and do not represent the actual size, features, specifications, fittings and furnishings. The developer reserves the right to make revisions or alterations, at its absolute discretion, without any liability whatsoever. Key Plans are approximate and symbolic.



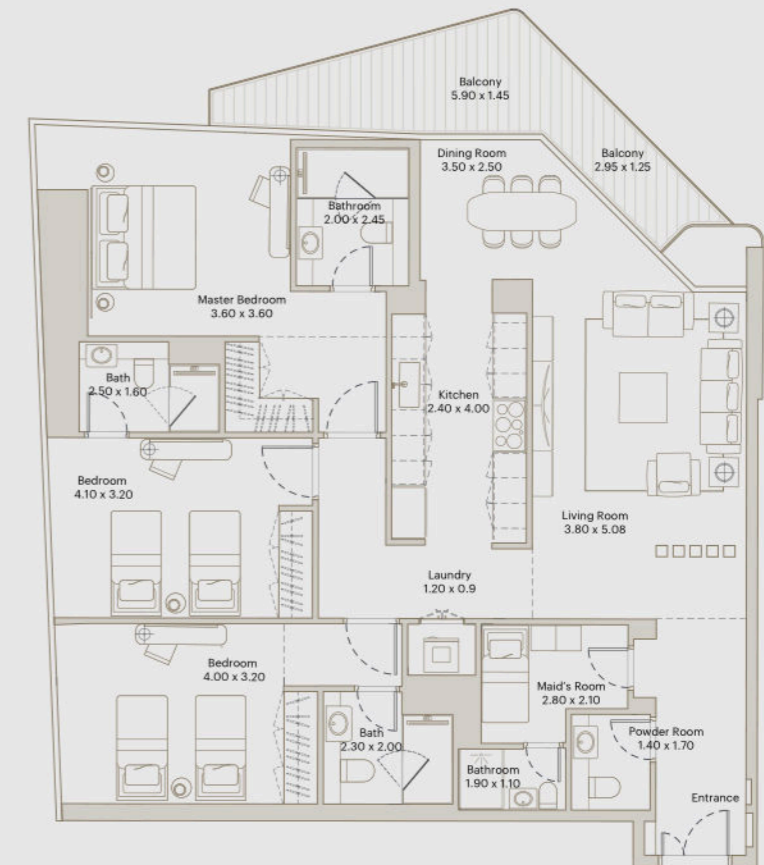
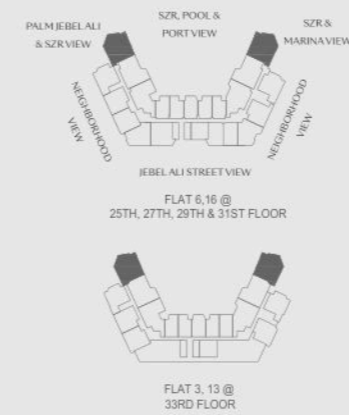
FLOORPLANS
– 3 Bedrooms –

ÉLEVÉ
BY DEYAAR

3 BR
APARTMENT

1A

AREA
INTERNAL AREA : 1536 ft²
BALCONY AREA : 152 ft²
TOTAL AREA : 1688 ft²



All materials dimensions, and drawings are approximate only. Information is subject to change without notice at developer's absolute discretion. Actual area may vary from the stated area. Drawings not to scale. All images used are for illustrative purposes only and do not represent the actual size, features, specifications, fittings and furnishings. The developer reserves the right to make revisions or alterations, at its absolute discretion, without any liability whatsoever. Key Plans are approximate and symbolic.

ÉLEVÉ
BY DEYAAR

3 BR GARDEN
APARTMENT

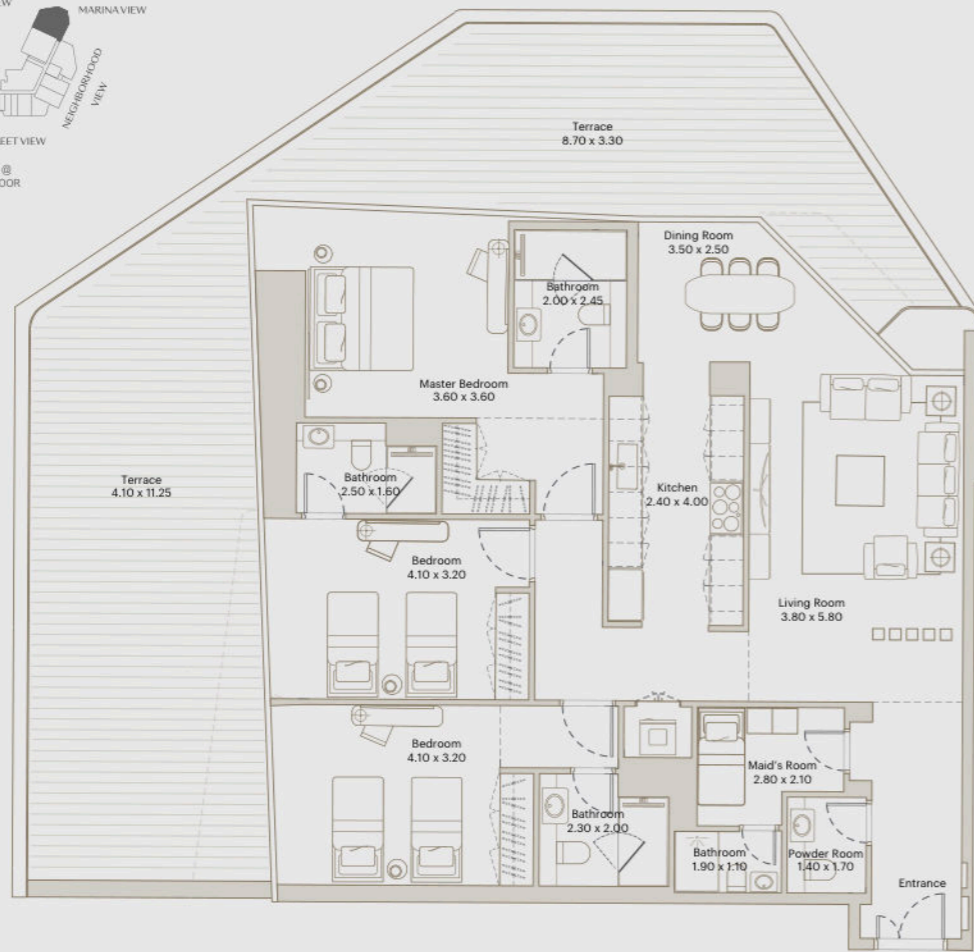
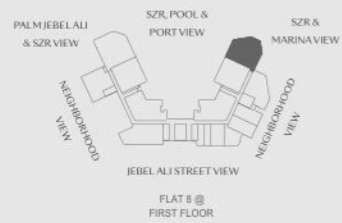
1B

AREA

INTERNAL AREA : 1535 ft²

BALCONY AREA : 873 ft²

TOTAL AREA : 2408 ft²



All materials, dimensions, and drawings are approximate only. Information is subject to change without notice at developer's absolute discretion. Actual area may vary from the stated area. Drawings not to scale. All images used are for illustrative purposes only and do not represent the actual size, features, specifications, fittings and furnishings. The developer reserves the right to make revisions or alterations, at its absolute discretion, without any liability whatsoever. Key Plans are approximate and symbolic.

ÉLEVÉ
BY DEYAAR

3 BR GARDEN
APARTMENT

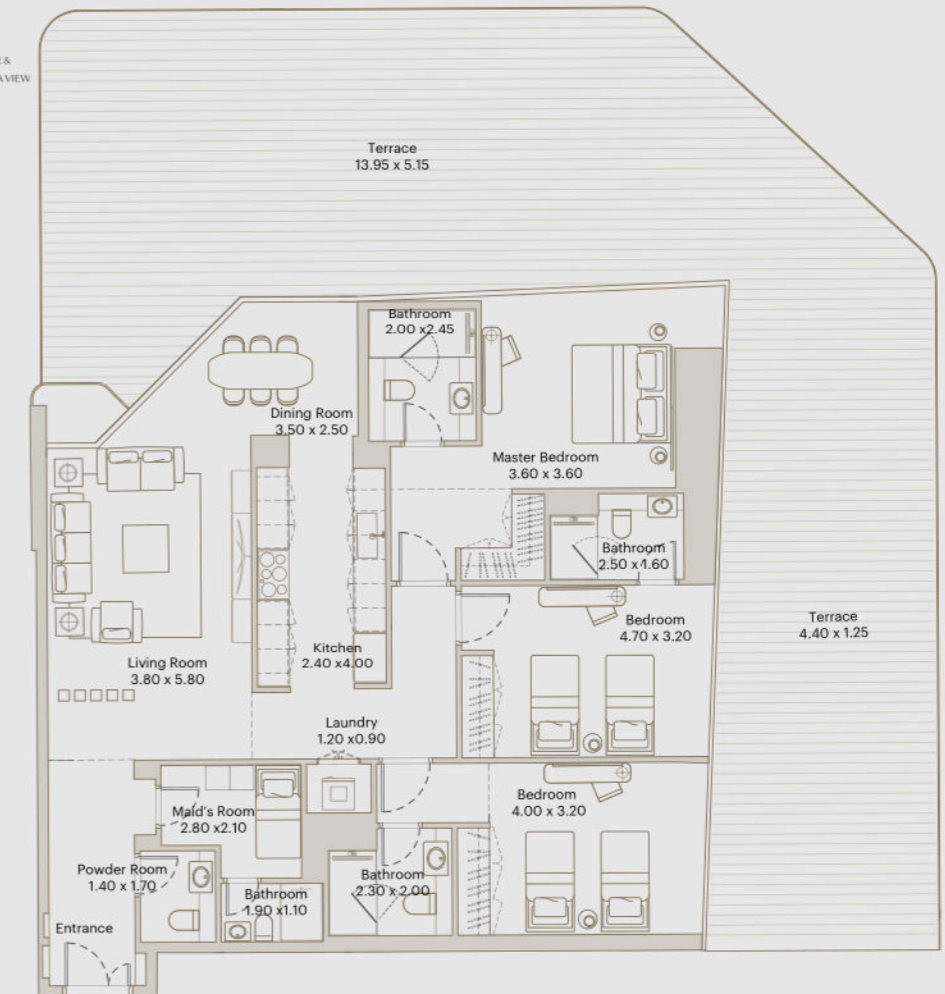
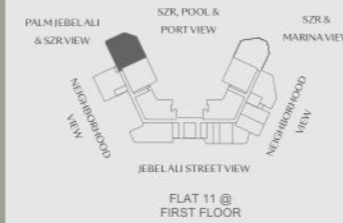
1C

AREA

INTERNAL AREA : 1535 ft²

BALCONY AREA : 1411 ft²

TOTAL AREA : 2946 ft²



All materials, dimensions, and drawings are approximate only. Information is subject to change without notice at developer's absolute discretion. Actual area may vary from the stated area. Drawings not to scale. All images used are for illustrative purposes only and do not represent the actual size, features, specifications, fittings and furnishings. The developer reserves the right to make revisions or alterations, at its absolute discretion, without any liability whatsoever. Key Plans are approximate and symbolic.

ÉLEVÉ
BY DEYAAR

3 BR
APARTMENT

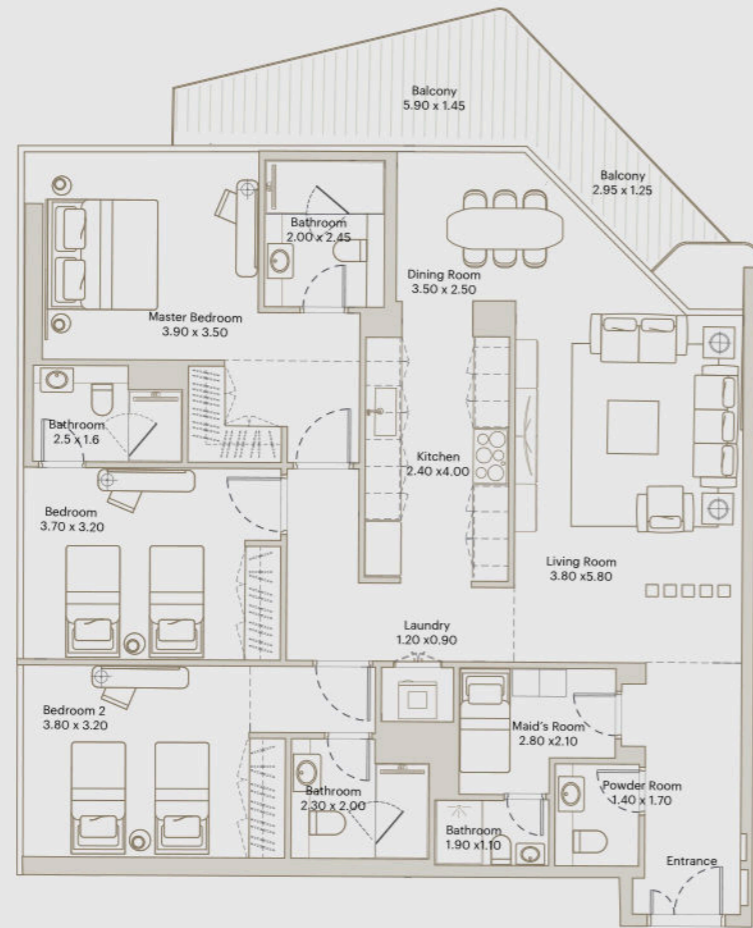
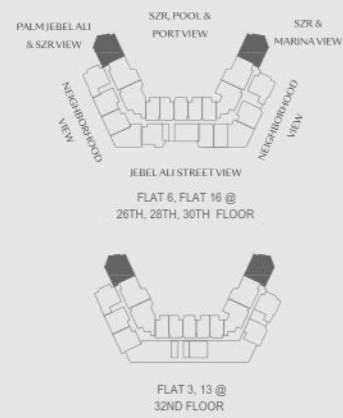
1D

AREA

INTERNAL AREA : 1499 ft²

BALCONY AREA : 154 ft²

TOTAL AREA : 1653 ft²



All materials, dimensions, and drawings are approximate only. Information is subject to change without notice at developer's absolute discretion. Actual area may vary from the stated area. Drawings not to scale. All images used are for illustrative purposes only and do not represent the actual size, features, specifications, fittings and furnishings. The developer reserves the right to make revisions or alterations, at its absolute discretion, without any liability whatsoever. Key Plans are approximate and symbolic.

ÉLEVÉ
BY DEYAAR

3 BR
APARTMENT

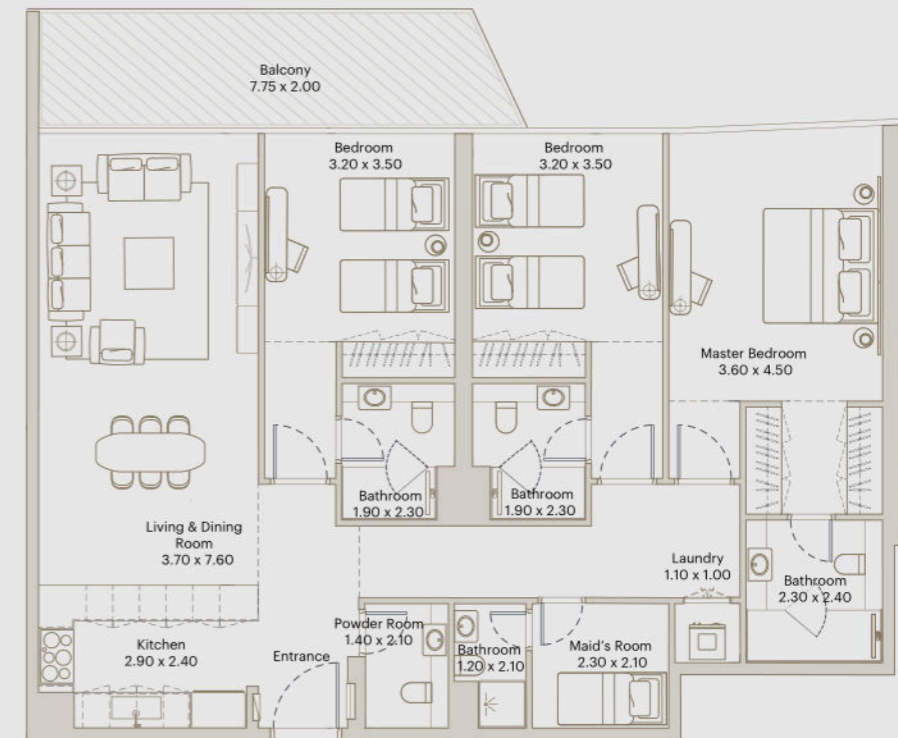
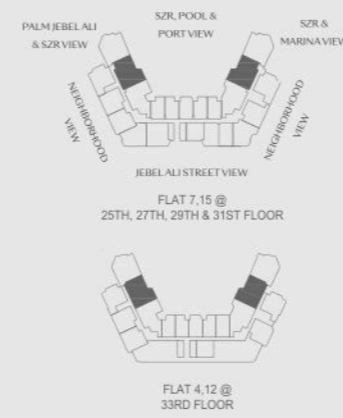
2A

AREA

INTERNAL AREA : 1528 ft²

BALCONY AREA : 169 ft²

TOTAL AREA : 1697 ft²



All materials, dimensions, and drawings are approximate only. Information is subject to change without notice at developer's absolute discretion. Actual area may vary from the stated area. Drawings not to scale. All images used are for illustrative purposes only and do not represent the actual size, features, specifications, fittings and furnishings. The developer reserves the right to make revisions or alterations, at its absolute discretion, without any liability whatsoever. Key Plans are approximate and symbolic.

ÉLEVÉ
BY DEYAAR

3 BR GARDEN
APARTMENT

2B

AREA

INTERNAL AREA : 1528 ft²

BALCONY AREA : 700 ft²

TOTAL AREA : 2229 ft²

All materials dimensions, and drawings are approximate only. Information is subject to change without notice at developer's absolute discretion. Actual area may vary from the stated area. Drawings not to scale. All images used are for illustrative purposes only and do not represent the actual size, features, specifications, fittings and furnishings. The developer reserves the right to make revisions or alterations, at its absolute discretion, without any liability whatsoever. Key Plans are approximate and symbolic.

ÉLEVÉ
BY DEYAAR

3 BR
APARTMENT

2C

AREA

INTERNAL AREA : 1525 ft²

BALCONY AREA : 169 ft²

TOTAL AREA : 1694 ft²

All materials dimensions, and drawings are approximate only. Information is subject to change without notice at developer's absolute discretion. Actual area may vary from the stated area. Drawings not to scale. All images used are for illustrative purposes only and do not represent the actual size, features, specifications, fittings and furnishings. The developer reserves the right to make revisions or alterations, at its absolute discretion, without any liability whatsoever. Key Plans are approximate and symbolic.

ÉLEVÉ
BY DEYAAR

3 BR
APARTMENT

3A

AREA

INTERNAL AREA : 1481 ft²

BALCONY AREA : 185 ft²

TOTAL AREA : 1666 ft²

FLAT 08 @ 25TH, 27TH, 29TH & 31ST FLOOR

FLAT 14 @ 26TH, 28TH, 30TH FLOOR

FLAT 11 @ 32ND FLOOR

FLAT 5 @ 33RD FLOOR

All materials, dimensions, and drawings are approximate only. Information is subject to change without notice at developer's absolute discretion. Actual area may vary from the stated area. Drawings not to scale. All images used are for illustrative purposes only and do not represent the actual size, features, specifications, fittings and furnishings. The developer reserves the right to make revisions or alterations, at its absolute discretion, without any liability whatsoever. Key Plans are approximate and symbolic.

ÉLEVÉ
BY DEYAAR

3 BR
APARTMENT

3B

AREA

INTERNAL AREA : 1481 ft²

BALCONY AREA : 152 ft²

TOTAL AREA : 1633 ft²

FLAT 14 @ 25TH, 27TH, 29TH & 31ST FLOOR

FLAT 5 @ 26TH, 28TH, 30TH FLOOR

FLAT 05 @ 32ND FLOOR

FLAT 11 @ 33RD FLOOR

All materials, dimensions, and drawings are approximate only. Information is subject to change without notice at developer's absolute discretion. Actual area may vary from the stated area. Drawings not to scale. All images used are for illustrative purposes only and do not represent the actual size, features, specifications, fittings and furnishings. The developer reserves the right to make revisions or alterations, at its absolute discretion, without any liability whatsoever. Key Plans are approximate and symbolic.

