





## LIVE PROUD

### WHERE THE HEART OF DUBAI IS THE ADDRESS TO YOUR HOME

Introducing **wasl1**, an iconic parkside freehold master development from **wasl** Asset Management Group in the heart of Dubai, offering just what you desire. A flawless blend of urban living and modern-day sophistication, with the uninterrupted serenity of Zabeel Park. Be certain that the key to your home at **wasl1** will unlock an extraordinary lifestyle.



## LIVE PARKSIDE WHERE NATURE IS YOUR PRIVATE COURTYARD

Living in **wasl1** means being surrounded by lush serenity in the heart of Dubai, where you enjoy direct access to a refreshing retreat on Zabeel Park.

What's more, you can transport yourself to the buzzing city life within moments.

## LIVE CONNECTED WHERE EVERY END OF DUBAI IS WITHIN YOUR REACH

As a gateway between old and new Dubai, **wasl1** keeps you connected to every end of the city. The easy pedestrian access to the metro station and transportation lines ensures you are never too far from any destination. **wasl1** provides direct access to the city centre locations, which include:

- ▼ DXB Airport
- ▼ Sheikh Zayed Road
- ▼ Sheikh Rashid Road
- ▼ Sheikh Khalifa Bin Zayed Road
- ▼ DIFC
- ▼ Trade Centre District
- ▼ Downtown Dubai
- ▼ Dubai Mall
- ▼ The Beach

**wasl1**'s proximity to key locations ensures you can move around the city with absolute ease.



A vibrant scene of a woman and a young girl walking through a modern plaza. The woman is wearing a black hijab and a black abaya, and the girl is wearing a white dress with a pink sash. They are surrounded by tall palm trees, colorful balloons, and a large fountain in the foreground. In the background, there are modern high-rise buildings with balconies and greenery. The sky is bright and blue with some clouds.

## LIVE FULL WHERE LIFE EMBRACES JOY INSIDE OUT

There is never a dull moment at **was11**. Take a stroll at the central plaza and you will know why this is true. Right from the playful water fountain to amusing interactive activities around every corner, you will come across a host of features designed to keep you engaged, entertained and educated.



## LIVE DELIGHTED WHERE FEASTS FOR THE SENSES ARE A WAY OF LIFE

As delightful as it may sound, **wasl1** welcomes you to a unique culinary adventure with a diverse mix of restaurants and cafés. From fast casual to premium dining, from concept-based restaurants to healthy gourmet eateries.

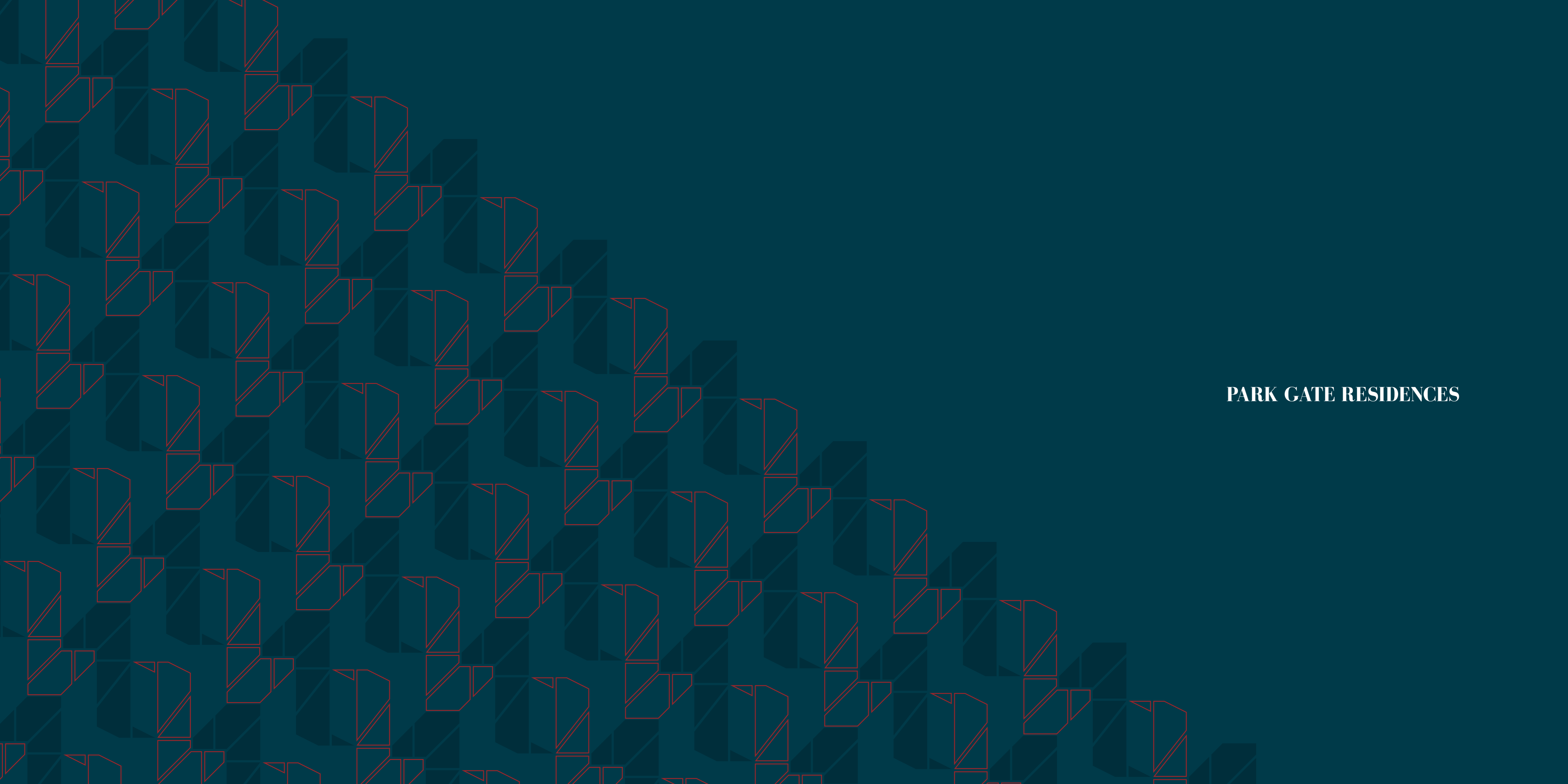
No matter what your preference is, you can be certain of a rewarding experience.

## LIVE ACCOMPLISHED WHERE WORK AND PLAY ARE ONE AND THE SAME

Life is all about finding the right balance. **wasl1** offers just that; a perfect blend of sophisticated lifestyle with an exceptional work environment. As a multi-dimensional landmark destination, **wasl1** features world-class architecture complemented by modern-day amenities that place it as one of the most desired destinations among residents and corporates.

For those who want to keep up with their fitness regime, you have a state-of-the-art health club, complete with first-class equipment and amenities. At **wasl1** you can be certain to enjoy the best of everything, all in one place.





## **PARK GATE RESIDENCES**





The image is a promotional rendering for Park Gate Residences. It features a man in a black tuxedo and a woman in a long, elegant red dress standing on a balcony with a glass railing. They are looking at each other. The background is a vibrant, sunlit scene of modern high-rise residential towers with glass facades and balconies. The towers are surrounded by lush greenery, including palm trees and a large park area with a fountain. The sky is a warm, golden color, suggesting sunset or sunrise. The overall atmosphere is one of luxury and sophisticated living.

## LIVE SPECTACULAR WHERE LIFESTYLE IS AS STUNNING AS THE VIEW

Introducing **Park Gate Residences**, four luxurious high-rise residential towers, overlooking lush Zabeel Park.

All of the 1, 2 & 3 bedroom apartments, podium townhouses and penthouses feature a brilliant fusion of inspired design and unmatched comfort to ensure a refined well-being for individuals and families.





## LIVE LUXURIOUS WHERE ART AND ELEGANCE FORM A PERFECT FRAME

**Park Gate Residences at wasl1** never fail to make a lasting impression, from elegant wood to brushed stainless steel highlights and marble finishings.

All residential units, from 1, 2 & 3 bedroom apartments to the luxuriously designed podium townhouses and penthouses, welcome you to a refined lifestyle that perfectly blends tasteful interiors and breathtaking views of Zabeel Park. This rare fusion of art and elegance makes it one of the most desirable destinations to live in.



## LIVE PRIVILEGED WHERE ALL THE PERKS YOU DESIRE ARE AT YOUR DOORSTEP

Bringing you a host of world-class amenities that ensure your life at **Park Gate Residences** is far from ordinary.

- ▼ Landscaped areas in the podium with playful water features
- ▼ Lush lawn podium roof with swimming pool and play area for kids
- ▼ A state-of-the-art health club with changing rooms and kids' playroom
- ▼ Convenient food & beverage outlets at your doorstep
- ▼ Abundant basement and podium parking for residents









## ABOUT wasl

**wasl** Asset Management Group was established in 2008 by the Dubai Real Estate Corporation (DREC) to oversee the management of its assets and grow its real estate portfolio. Today **wasl** is one of the largest real estate management companies in Dubai with over 35,000 properties under management, ranging from residential and commercial properties to industrial plots of land, as well as hotels and serviced apartments.

To know more about **wasl1** master development and **Park Gate Residences**, please visit [www.wasl1.ae](http://www.wasl1.ae)

For all other enquiries and information contact us on **800wasl (9275)** or email us on [sales@wasl1.ae](mailto:sales@wasl1.ae)



## نبذة عن وصل

تأسست مجموعة **وصل** لإدارة الأصول في عام 2008 من قبل مؤسسة دبي العقارية، لتتولى الإشراف على إدارة أصولها وتنمية محفظتها العقارية، وتعد اليوم واحدة من أكبر شركات إدارة وتطوير العقارات في دبي، مع وجود أكثر من 35 ألف وحدة تحت إدارتها، بما في ذلك العقارات السكنية والتجارية وقطع الأراضي الصناعية، فضلاً عن الفنادق والشقق الفندقية.

لمعرفة المزيد عن مشروع **وصل 1** و **بارك غيت ريزيدنسيز**، يرجى زيارة: [www.wasl1.ae](http://www.wasl1.ae)

لكافة الاستفسارات والمعلومات الأخرى، يرجى الاتصال على الرقم **800wasl (9275)** أو عبر البريد الإلكتروني: [sales@wasl1.ae](mailto:sales@wasl1.ae)

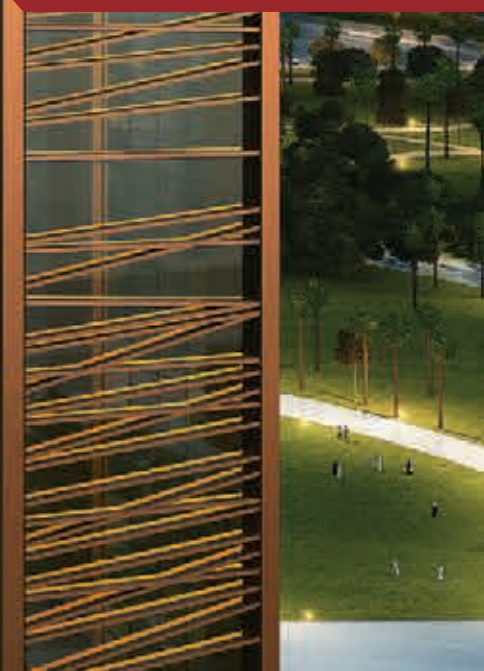


## لحياة استثنائية

حيث قلب دبي هو  
مكان إقامتك

نفخر بتقديم **وصل 1** إليكم، مشروع التملك الحر المميز الذي أطلقته مجموعة **وصل** لإدارة الأصول، ويقع في قلب مدينة دبي ليلاحي تطلعات المقيمين لحد أفضل.

ويعد المشروع مزيدًا مثاليًا يجمع بين كافة مقومات المعيشة العصرية، ويتمتع بالأجواء العادية بجانب حديقة زعبل. إن امتلاكك وحدة سكنية في **وصل 1** يعني الاستمتاع بنمط حياة لا مثيل له.





## لحياة هادئة قرب الحديقة

### حيث تكون الطبيعة حديقة منزلك

الإقامة في **وصل 1** تعني العيش في أحضان بيئة خصراء هادئة في قلب المدينة، على بعد خطوات من حديقة زميل، الوجهة المميزة للاسترخاء. ويتمتع المقيمون في المشروع بفرصة الاستمتاع بأجواء الحديقة العادئة، تم الانتقال بسهولة وفي دقائق معدودة إلى حياة المدينة.

## لحياة سهلة

حيث تكون قريباً من كافة مناطق دبي

يعتبر **وصل 1** بوابة تربطك بمناطق دبي القديمة والجديدة في الوقت ذاته، لتكون قريباً من كافة أرجاء المدينة. ونظراً لسهولة الوصول سيراً على الأقدام إلى محطة المترو وخطوط المواصلات، ستكون قريباً جداً من أي وجهة. إن **وصل 1** يتيح لك الوصول مباشرة إلى مختلف المواقع الرئيسية في المدينة، بما في ذلك:

- ▶ مطار دبي الدولي
- ▶ شارع الشيخ زايد
- ▶ شارع الشيخ راشد
- ▶ شارع الشيخ خليفة بن زايد
- ▶ مركز دبي المالي العالمي
- ▶ منطقة المركز التجاري
- ▶ داون تاون دبي
- ▶ دبي مول
- ▶ ذا بيتش

إن وجود **وصل 1** على مقربة من أهم المواقع يتيح لك الانتقال إلى كافة أرجاء المدينة بسهولة تامة.



## لحياة ملؤها التشويق حيث قلب المدينة ينبض بكل تفاصيل الحياة

مشروع **وصل 1** يوفر الكثير من عناصر الترفيه، إذ يمكنك الاستمتاع  
بنزهة في الساحة المركزية، لتجد هناك النافورة المائية الجميلة، والكثير  
من الأنشطة التعليمية التفاعلية في أجواء ممتعة، فضلاً عن  
مجموعة واسعة من الفعاليات التي صممت لإسعادك والترؤيح عن  
نفسك بطريقة مفيدة.





## لحياة سعيدة

حيث كل ما لذ وطاب  
على مقربة منك

يستقبلك **1 وصل** بالترحاب لتعيش تجربة فريدة من نوعها، بفضل وجود خيارات متنوعة من المطاعم والمقاهي التي تقدم لك الوجبات الخفيفة والسريعة في أجواء ممتعة، إضافةً إلى المطاعم العالمية الراقية التي تشتهر بأطباقها المتميزة. وهناك أيضًا مطاعم متخصصة في تقديم المأكولات الصحية اللذيذة، ليضمن لك **1 وصل** تجربة رائعة.

## لحياة متكاملة حيث يجتمع العمل والترفيه في مكان واحد

الحياة المثالية تكمن في تحقيق التوازن الصحيح، بين نمط الحياة العصرية وبيئة العمل الاستثنائية. وهذا ما يقدمه **وصل 1**.

يمتاز **وصل 1** بتصميم عالمي، تتوافر فيه مرافق الراحة الحديثة التي تصحها في صدارة الوجهات التي يفضلها السكان والشركات على حد سواء.

وإذا كنت ممن يحرصون على اللياقة البدنية، سيوفر لك المشروع ناديًا صحيًا معززًا بالمعدات الحديثة والمرافق الراقية: باختصار، **وصل 1** يضمن لك الأفضل من كل شيء، في مكان واحد.



بارك غيت ريزيدنسيز



## لحياة مميزة

حيث يندمج نمط الحياة الراقية  
مع الإطلالات الخلابة

المرحلة الأولى من **وصل 1** تشتمل على **بارك غيت ريزيدنسيز**،  
المكونة من أربعة أبراج سكنية فاخرة، تتميز بإطلاتها الفريدة على  
حديقة زعبيل.

وتعكس جميع الشقق المكونة من غرفة وغرفتين وثلاث غرف،  
بالإضافة إلى وحدات التاونهاوس والبينتهاوس، روعة التصميم الملمح  
والراحة الفريدة، لضمان أرقى مستويات الرفاهية للأفراد والأسر.







ستكون أبراج **بارك غيت ريزيدنسيز** في **وصل 1** مصدرًا دائمًا للإعجاب، لما تشتمل عليه من لمسات فخمة، بدءًا من التشطيبات الخشبية والمعدنية الراقية، وحتى أرضيات الرخام.

إن كل واحدة من الشقق المكونة من غرفة وغرفتين وثلاث غرف، بالإضافة إلى وحدات التاونهاوس والبيتهاوس الفخمة، توفر لكم نمط حياة رائعًا يمزج بين اللمسات الداخلية الراقية من جهة، وبين المناظر الخلابة في حديقة زعبييل من جهة أخرى. وبفضل هذا التناغم النادر بين الفن والرقمي، يصبح المشروع واحدًا من أبرز الوجهات المفضلة للعيش.

## لحياة فاخرة

حيث يجتمع  
الفن والرقمي  
في إطار مثالي  
ومتكامل



## لحياة متميزة

حيث كل ما تحتاجه  
في متناول يديك

توفر لك **بارك غيت ريزيدنسيز** مجموعة من المرافق العالمية الراقية التي تضمن لك حياة استثنائية بكل المقاييس، من ضمنها:

- ▶ مناطق معززة بالمناظر الطبيعية في منصة مشتركة تضم النافورة الراقصة
- ▶ مساحات خضراء تغطي سطح المنصة مع وجود حمام سباحة وملعب للأطفال
- ▶ نادٍ صحي عصري مع غرف تغيير الملابس للكبار وغرفة ألعاب للصغار
- ▶ محلات للتجزئة والعديد من المطاعم والمقاهي
- ▶ مواقف السيارات في السرداب وفي المنصة المشتركة للمقيمين







# PARK GATE RESIDENCES TOWER A - LEVEL 5



SUITE 07

SUITE 08

1 BR / TYPE 4C

3 BR / TYPE 3E

SUITE	844.11 SQ.FT.	78.42 SQ.M.
TERRACE	154.46 SQ.FT.	14.35 SQ.M.
<b>TOTAL</b>	<b>998.57 SQ.FT.</b>	<b>92.77 SQ.M.</b>

SUITE	1,816.84 SQ.FT.	168.79 SQ.M.
TERRACE	782.97 SQ.FT.	72.74 SQ.M.
<b>TOTAL</b>	<b>2,599.81 SQ.FT.</b>	<b>241.53 SQ.M.</b>

SUITE 06

2 BR / TYPE 4C

SUITE	1,383.06 SQ.FT.	128.49 SQ.M.
TERRACE	913.75 SQ.FT.	84.89 SQ.M.
<b>TOTAL</b>	<b>2,296.80 SQ.FT.</b>	<b>213.38 SQ.M.</b>

SUITE 05

2 BR / TYPE 3C

SUITE	1,463.14 SQ.FT.	135.93 SQ.M.
TERRACE	445.52 SQ.FT.	41.39 SQ.M.
<b>TOTAL</b>	<b>1,908.66 SQ.FT.</b>	<b>177.32 SQ.M.</b>

SUITE 04

2 BR / TYPE 2B

SUITE	1,416.85 SQ.FT.	131.63 SQ.M.
TERRACE	522.80 SQ.FT.	48.57 SQ.M.
<b>TOTAL</b>	<b>1,939.66 SQ.FT.</b>	<b>180.20 SQ.M.</b>

SUITE 03

2 BR / TYPE 1C

SUITE	1,366.05 SQ.FT.	126.91 SQ.M.
TERRACE	680.28 SQ.FT.	63.20 SQ.M.
<b>TOTAL</b>	<b>2,046.33 SQ.FT.</b>	<b>190.11 SQ.M.</b>

SUITE 02

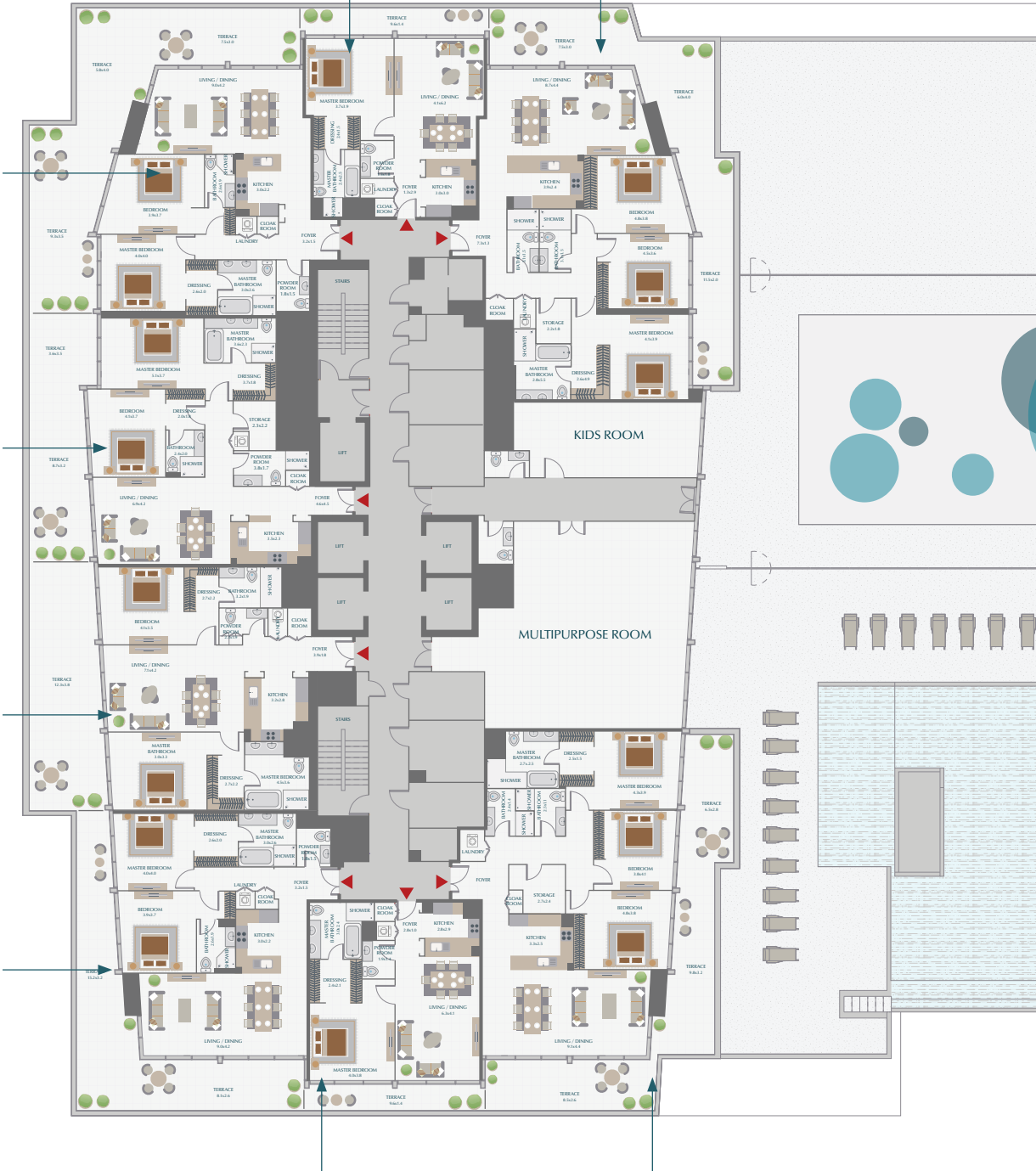
SUITE 01

1 BR / TYPE 1B

3 BR / TYPE 1C

SUITE	852.18 SQ.FT.	79.17 SQ.M.
TERRACE	151.45 SQ.FT.	14.07 SQ.M.
<b>TOTAL</b>	<b>1,003.63 SQ.FT.</b>	<b>93.24 SQ.M.</b>

SUITE	1,788.42 SQ.FT.	166.15 SQ.M.
TERRACE	750.46 SQ.FT.	69.72 SQ.M.
<b>TOTAL</b>	<b>2,538.88 SQ.FT.</b>	<b>235.87 SQ.M.</b>



All room dimensions are in metric and measured to structural elements and exclude wall finishes and construction tolerances. Calculation of suite area is measured as the area bounded by the centerline of demising or party walls separating one unit from another unit, the exterior surface of all exterior walls and the exterior surface of the corridor wall on enclosing and abutting the unit. Calculation of terrace area is measured as the area bounded by the centerlines of demising or party walls separating one unit from another unit, the outermost face of the enclosing guard and the external face of the site abutting the balcony. All materials, dimensions & drawings features and amenities are approximate at the time of printing. Information subject to change without notice. Actual suite areas may vary from the stated area. Drawings are not to scale E&EO. The developer reserves the right to make revisions.

# PARK GATE RESIDENCES

## TOWER A - LEVEL 6,8,10,11,12,15,17,18



### SUITE 07

#### 1 BR / TYPE 4A

SUITE	844.11 SQ.FT.	78.42 SQ.M.
TERRACE	145.42 SQ.FT.	13.51 SQ.M.
<b>TOTAL</b>	<b>989.53 SQ.FT.</b>	<b>91.93 SQ.M.</b>

### SUITE 06

#### 2 BR / TYPE 4A

SUITE	1,379.29 SQ.FT.	128.14 SQ.M.
TERRACE	258.44 SQ.FT.	24.01 SQ.M.
<b>TOTAL</b>	<b>1,637.73 SQ.FT.</b>	<b>152.15 SQ.M.</b>

### SUITE 08

#### 2 BR / TYPE 4A

SUITE	1,379.93 SQ.FT.	128.20 SQ.M.
TERRACE	258.55 SQ.FT.	24.02 SQ.M.
<b>TOTAL</b>	<b>1,638.48 SQ.FT.</b>	<b>152.22 SQ.M.</b>

### SUITE 05

#### 2 BR / TYPE 3A

SUITE	1,463.14 SQ.FT.	135.93 SQ.M.
TERRACE	151.56 SQ.FT.	14.08 SQ.M.
<b>TOTAL</b>	<b>1,614.69 SQ.FT.</b>	<b>150.01 SQ.M.</b>

### SUITE 09

#### 2 BR / TYPE 3A

SUITE	1,462.49 SQ.FT.	135.87 SQ.M.
TERRACE	151.56 SQ.FT.	14.08 SQ.M.
<b>TOTAL</b>	<b>1,614.05 SQ.FT.</b>	<b>149.95 SQ.M.</b>

### SUITE 04

#### 2 BR / TYPE 2A

SUITE	1,417.28 SQ.FT.	131.67 SQ.M.
TERRACE	137.46 SQ.FT.	12.77 SQ.M.
<b>TOTAL</b>	<b>1,554.74 SQ.FT.</b>	<b>144.44 SQ.M.</b>

### SUITE 10

#### 2 BR / TYPE 2A

SUITE	1,417.93 SQ.FT.	131.73 SQ.M.
TERRACE	137.46 SQ.FT.	12.77 SQ.M.
<b>TOTAL</b>	<b>1,555.39 SQ.FT.</b>	<b>144.50 SQ.M.</b>

### SUITE 03

#### 2 BR / TYPE 1A

SUITE	1,366.26 SQ.FT.	126.93 SQ.M.
TERRACE	206.99 SQ.FT.	19.23 SQ.M.
<b>TOTAL</b>	<b>1,573.25 SQ.FT.</b>	<b>146.16 SQ.M.</b>

### SUITE 01

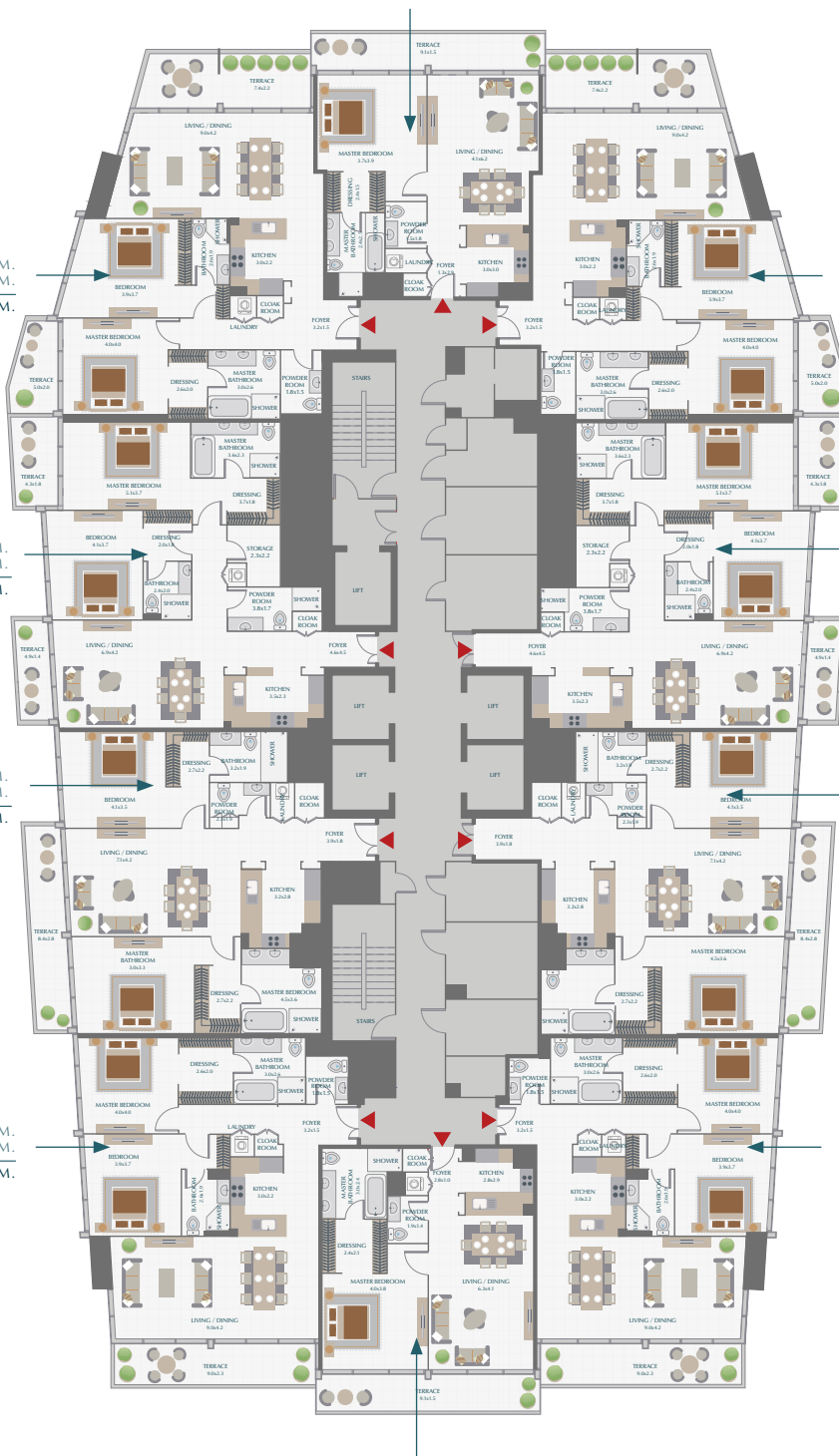
#### 2 BR / TYPE 1A

SUITE	1,366.26 SQ.FT.	126.93 SQ.M.
TERRACE	206.99 SQ.FT.	19.23 SQ.M.
<b>TOTAL</b>	<b>1,573.25 SQ.FT.</b>	<b>146.16 SQ.M.</b>

### SUITE 02

#### 1 BR / TYPE 1A

SUITE	852.07 SQ.FT.	79.16 SQ.M.
TERRACE	146.82 SQ.FT.	13.64 SQ.M.
<b>TOTAL</b>	<b>998.89 SQ.FT.</b>	<b>92.80 SQ.M.</b>



All room dimensions are in metric and measured to structural elements and exclude wall finishes and construction tolerances. Calculation of suite area is measured as the area bounded by the centerline of demising or party walls separating one unit from another unit, the exterior surface of all exterior walls and the exterior surface of the corridor wall on enclosing and abutting the unit. Calculation of terrace area is measured as the area bounded by the centerlines of demising or party walls separating one unit from another unit, the outermost face of the enclosing guard and the external face of the site abutting the balcony. All materials, dimensions & drawings features and amenities are approximate at the time of printing. Information subject to change without notice. Actual suite areas may vary from the stated area. Drawings are not to scale E&EO. The developer reserves the right to make revisions.

# PARK GATE RESIDENCES TOWER A - LEVEL 7



## SUITE 07

### 1 BR / TYPE 4A

SUITE	844.11 SQ.FT.	78.42 SQ.M.
TERRACE	145.42 SQ.FT.	13.51 SQ.M.
<b>TOTAL</b>	<b>989.53 SQ.FT.</b>	<b>91.93 SQ.M.</b>

## SUITE 06

### 2 BR / TYPE 4A

SUITE	1,379.29 SQ.FT.	128.14 SQ.M.
TERRACE	258.44 SQ.FT.	24.01 SQ.M.
<b>TOTAL</b>	<b>1,637.73 SQ.FT.</b>	<b>152.15 SQ.M.</b>

## SUITE 08

### 2 BR / TYPE 4B

SUITE	1,379.93 SQ.FT.	128.20 SQ.M.
TERRACE	180.62 SQ.FT.	16.78 SQ.M.
<b>TOTAL</b>	<b>1,560.55 SQ.FT.</b>	<b>144.98 SQ.M.</b>

## SUITE 05

### 2 BR / TYPE 3B

SUITE	1,463.14 SQ.FT.	135.93 SQ.M.
TERRACE	69.10 SQ.FT.	6.42 SQ.M.
<b>TOTAL</b>	<b>1,532.24 SQ.FT.</b>	<b>142.35 SQ.M.</b>

## SUITE 09

### 2 BR / TYPE 3B

SUITE	1,462.49 SQ.FT.	135.87 SQ.M.
TERRACE	69.10 SQ.FT.	6.42 SQ.M.
<b>TOTAL</b>	<b>1,531.60 SQ.FT.</b>	<b>142.29 SQ.M.</b>

## SUITE 04

### 2 BR / TYPE 2A

SUITE	1,417.28 SQ.FT.	131.67 SQ.M.
TERRACE	137.46 SQ.FT.	12.77 SQ.M.
<b>TOTAL</b>	<b>1,554.74 SQ.FT.</b>	<b>144.44 SQ.M.</b>

## SUITE 10

### 2 BR / TYPE 2A

SUITE	1,417.93 SQ.FT.	131.73 SQ.M.
TERRACE	137.46 SQ.FT.	12.77 SQ.M.
<b>TOTAL</b>	<b>1,555.39 SQ.FT.</b>	<b>144.50 SQ.M.</b>

## SUITE 03

### 2 BR / TYPE 1A

SUITE	1,366.26 SQ.FT.	126.93 SQ.M.
TERRACE	206.99 SQ.FT.	19.23 SQ.M.
<b>TOTAL</b>	<b>1,573.25 SQ.FT.</b>	<b>146.16 SQ.M.</b>

## SUITE 01

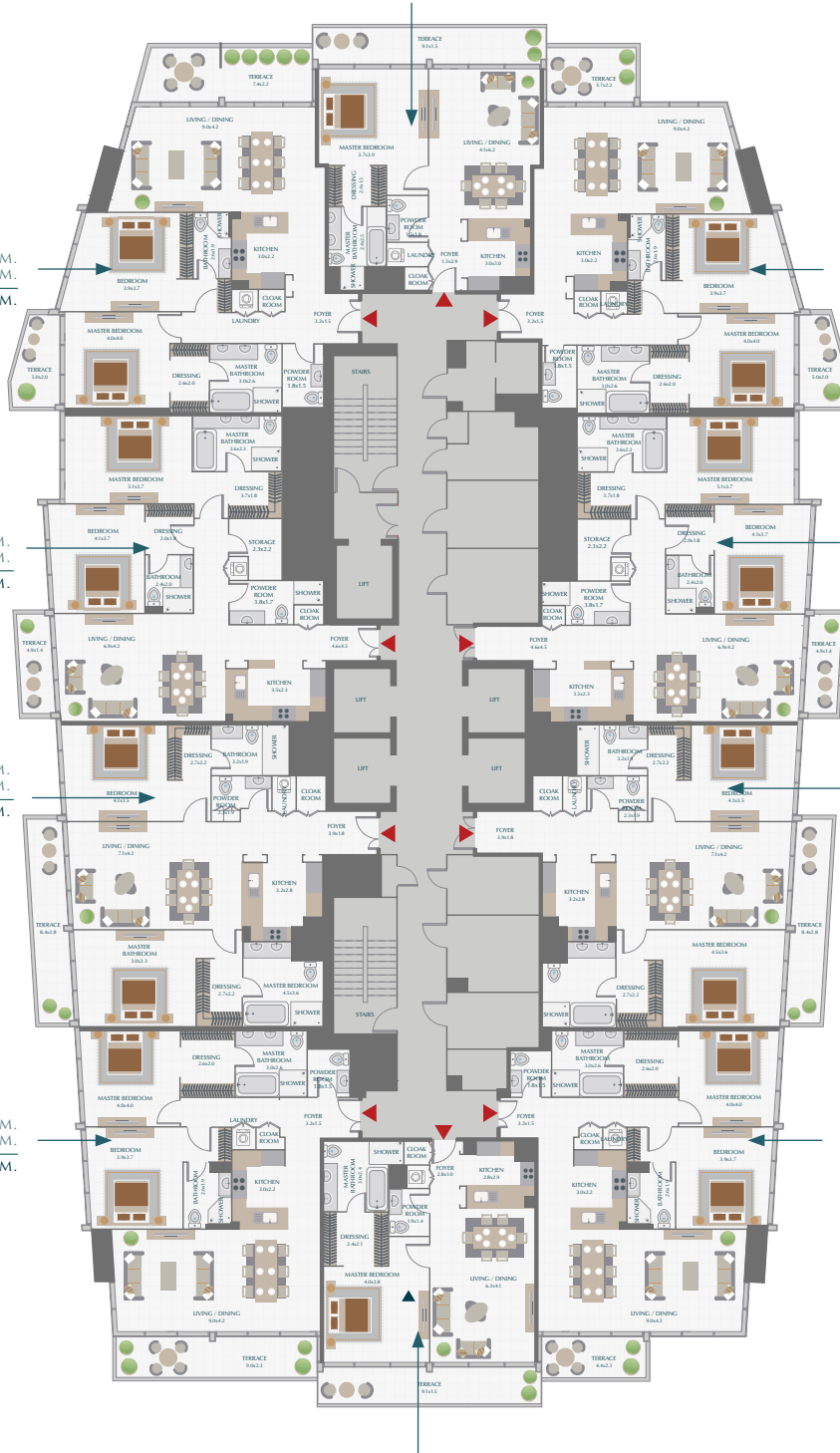
### 2 BR / TYPE 1B

SUITE	1,366.26 SQ.FT.	126.93 SQ.M.
TERRACE	113.13 SQ.FT.	10.51 SQ.M.
<b>TOTAL</b>	<b>1,479.39 SQ.FT.</b>	<b>137.44 SQ.M.</b>

## SUITE 02

### 1 BR / TYPE 1A

SUITE	852.07 SQ.FT.	79.16 SQ.M.
TERRACE	146.82 SQ.FT.	13.64 SQ.M.
<b>TOTAL</b>	<b>998.89 SQ.FT.</b>	<b>92.80 SQ.M.</b>



# PARK GATE RESIDENCES TOWER A - LEVEL 9, 16



## SUITE 07

### 1 BR / TYPE 4A

SUITE	844.11 SQ.FT.	78.42 SQ.M.
TERRACE	145.42 SQ.FT.	13.51 SQ.M.
<b>TOTAL</b>	<b>989.53 SQ.FT.</b>	<b>91.93 SQ.M.</b>

## SUITE 06

### 2 BR / TYPE 4B

SUITE	1,379.29 SQ.FT.	128.14 SQ.M.
TERRACE	179.54 SQ.FT.	16.68 SQ.M.
<b>TOTAL</b>	<b>1,558.83 SQ.FT.</b>	<b>144.82 SQ.M.</b>

## SUITE 08

### 2 BR / TYPE 4A

SUITE	1,379.93 SQ.FT.	128.20 SQ.M.
TERRACE	257.47 SQ.FT.	23.92 SQ.M.
<b>TOTAL</b>	<b>1,637.41 SQ.FT.</b>	<b>152.12 SQ.M.</b>

## SUITE 05

### 2 BR / TYPE 3A

SUITE	1,463.14 SQ.FT.	135.93 SQ.M.
TERRACE	152.52 SQ.FT.	14.17 SQ.M.
<b>TOTAL</b>	<b>1,615.66 SQ.FT.</b>	<b>150.10 SQ.M.</b>

## SUITE 09

### 2 BR / TYPE 3A

SUITE	1,462.49 SQ.FT.	135.87 SQ.M.
TERRACE	152.63 SQ.FT.	14.18 SQ.M.
<b>TOTAL</b>	<b>1,615.13 SQ.FT.</b>	<b>150.05 SQ.M.</b>

## SUITE 04

### 2 BR / TYPE 2A

SUITE	1,417.28 SQ.FT.	131.67 SQ.M.
TERRACE	137.56 SQ.FT.	12.78 SQ.M.
<b>TOTAL</b>	<b>1,554.85 SQ.FT.</b>	<b>144.45 SQ.M.</b>

## SUITE 10

### 2 BR / TYPE 2A

SUITE	1,417.93 SQ.FT.	131.73 SQ.M.
TERRACE	137.35 SQ.FT.	12.76 SQ.M.
<b>TOTAL</b>	<b>1,555.28 SQ.FT.</b>	<b>144.49 SQ.M.</b>

## SUITE 03

### 2 BR / TYPE 1B

SUITE	1,366.26 SQ.FT.	126.93 SQ.M.
TERRACE	113.02 SQ.FT.	10.50 SQ.M.
<b>TOTAL</b>	<b>1,479.28 SQ.FT.</b>	<b>137.43 SQ.M.</b>

## SUITE 01

### 2 BR / TYPE 1A

SUITE	1,366.26 SQ.FT.	126.93 SQ.M.
TERRACE	206.99 SQ.FT.	19.23 SQ.M.
<b>TOTAL</b>	<b>1,573.25 SQ.FT.</b>	<b>146.16 SQ.M.</b>

## SUITE 02

### 1 BR / TYPE 1A

SUITE	852.07 SQ.FT.	79.16 SQ.M.
TERRACE	146.82 SQ.FT.	13.64 SQ.M.
<b>TOTAL</b>	<b>998.89 SQ.FT.</b>	<b>92.80 SQ.M.</b>

All room dimensions are in metric and measured to structural elements and exclude wall finishes and construction tolerances. Calculation of suite area is measured as the area bounded by the centerline of demising or party walls separating one unit from another unit, the exterior surface of all exterior walls and the exterior surface of the corridor wall on enclosing and abutting the unit. Calculation of terrace area is measured as the area bounded by the centerlines of demising or party walls separating one unit from another unit, the outermost face of the enclosing guard and the external face of the site abutting the balcony. All materials, dimensions & drawings features and amenities are approximate at the time of printing. Information subject to change without notice. Actual suite areas may vary from the stated area. Drawings are not to scale E&EO. The developer reserves the right to make revisions.

# PARK GATE RESIDENCES

## TOWER A - LEVEL 13



SUITE 07

1 BR / TYPE 4A

SUITE	844.11 SQ.FT.	78.42 SQ.M.
TERRACE	145.42 SQ.FT.	13.51 SQ.M.
<b>TOTAL</b>	<b>989.53 SQ.FT.</b>	<b>91.93 SQ.M.</b>

SUITE 06

2 BR / TYPE 4A

SUITE	1,379.29 SQ.FT.	128.14 SQ.M.
TERRACE	258.44 SQ.FT.	24.01 SQ.M.
<b>TOTAL</b>	<b>1,637.73 SQ.FT.</b>	<b>152.15 SQ.M.</b>

SUITE 08

2 BR / TYPE 4A

SUITE	1,379.93 SQ.FT.	128.20 SQ.M.
TERRACE	258.44 SQ.FT.	24.01 SQ.M.
<b>TOTAL</b>	<b>1,638.38 SQ.FT.</b>	<b>152.21 SQ.M.</b>

SUITE 05

2 BR / TYPE 3B

SUITE	1,463.14 SQ.FT.	135.93 SQ.M.
TERRACE	69.10 SQ.FT.	6.42 SQ.M.
<b>TOTAL</b>	<b>1,532.24 SQ.FT.</b>	<b>142.35 SQ.M.</b>

SUITE 09

2 BR / TYPE 3B

SUITE	1,462.49 SQ.FT.	135.87 SQ.M.
TERRACE	69.10 SQ.FT.	6.42 SQ.M.
<b>TOTAL</b>	<b>1,531.60 SQ.FT.</b>	<b>142.29 SQ.M.</b>

SUITE 04

2 BR / TYPE 2A

SUITE	1,417.28 SQ.FT.	131.67 SQ.M.
TERRACE	137.46 SQ.FT.	12.77 SQ.M.
<b>TOTAL</b>	<b>1,554.74 SQ.FT.</b>	<b>144.44 SQ.M.</b>

SUITE 10

2 BR / TYPE 2A

SUITE	1,417.93 SQ.FT.	131.73 SQ.M.
TERRACE	137.46 SQ.FT.	12.77 SQ.M.
<b>TOTAL</b>	<b>1,555.39 SQ.FT.</b>	<b>144.50 SQ.M.</b>

SUITE 03

2 BR / TYPE 1A

SUITE	1,366.26 SQ.FT.	126.93 SQ.M.
TERRACE	206.99 SQ.FT.	19.23 SQ.M.
<b>TOTAL</b>	<b>1,573.25 SQ.FT.</b>	<b>146.16 SQ.M.</b>

SUITE 01

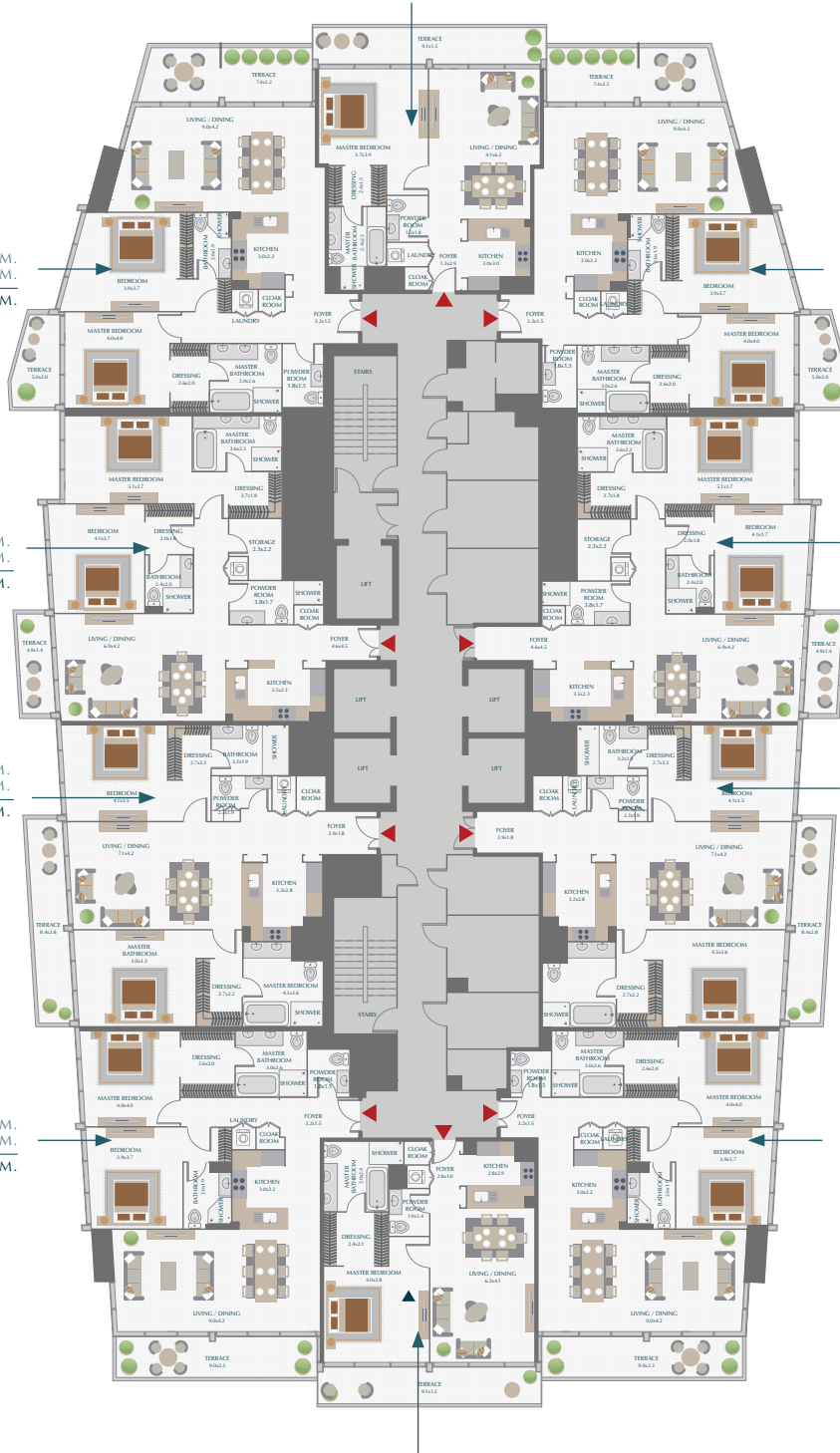
2 BR / TYPE 1A

SUITE	1,366.26 SQ.FT.	126.93 SQ.M.
TERRACE	206.99 SQ.FT.	19.23 SQ.M.
<b>TOTAL</b>	<b>1,573.25 SQ.FT.</b>	<b>146.16 SQ.M.</b>

SUITE 02

1 BR / TYPE 1A

SUITE	852.07 SQ.FT.	79.16 SQ.M.
TERRACE	146.82 SQ.FT.	13.64 SQ.M.
<b>TOTAL</b>	<b>998.89 SQ.FT.</b>	<b>92.80 SQ.M.</b>



All room dimensions are in metric and measured to structural elements and exclude wall finishes and construction tolerances. Calculation of suite area is measured as the area bounded by the centerline of demising or party walls separating one unit from another unit, the exterior surface of all exterior walls and the exterior surface of the corridor wall on enclosing and abutting the unit. Calculation of terrace area is measured as the area bounded by the centerlines of demising or party walls separating one unit from another unit, the outermost face of the enclosing guard and the external face of the site abutting the balcony. All materials, dimensions & drawings features and amenities are approximate at the time of printing. Information subject to change without notice. Actual suite areas may vary from the stated area. Drawings are not to scale E&EO. The developer reserves the right to make revisions.

# PARK GATE RESIDENCES TOWER A - LEVEL 14



SUITE 07

**1 BR / TYPE 4A**

SUITE	844.11 SQ.FT.	78.42 SQ.M.
TERRACE	145.42 SQ.FT.	13.51 SQ.M.
<b>TOTAL</b>	<b>989.53 SQ.FT.</b>	<b>91.93 SQ.M.</b>

SUITE 06

**2 BR / TYPE 4A**

SUITE	1,379.29 SQ.FT.	128.14 SQ.M.
TERRACE	257.47 SQ.FT.	23.92 SQ.M.
<b>TOTAL</b>	<b>1,636.76 SQ.FT.</b>	<b>152.06 SQ.M.</b>

SUITE 08

**2 BR / TYPE 4B**

SUITE	1,379.93 SQ.FT.	128.20 SQ.M.
TERRACE	179.43 SQ.FT.	16.67 SQ.M.
<b>TOTAL</b>	<b>1,559.37 SQ.FT.</b>	<b>144.87 SQ.M.</b>

SUITE 05

**2 BR / TYPE 3A**

SUITE	1,463.14 SQ.FT.	135.93 SQ.M.
TERRACE	152.52 SQ.FT.	14.17 SQ.M.
<b>TOTAL</b>	<b>1,615.66 SQ.FT.</b>	<b>150.10 SQ.M.</b>

SUITE 09

**2 BR / TYPE 3A**

SUITE	1,462.49 SQ.FT.	135.87 SQ.M.
TERRACE	152.63 SQ.FT.	14.18 SQ.M.
<b>TOTAL</b>	<b>1,615.13 SQ.FT.</b>	<b>150.05 SQ.M.</b>

SUITE 04

**2 BR / TYPE 2A**

SUITE	1,417.28 SQ.FT.	131.67 SQ.M.
TERRACE	137.46 SQ.FT.	12.77 SQ.M.
<b>TOTAL</b>	<b>1,554.74 SQ.FT.</b>	<b>144.44 SQ.M.</b>

SUITE 10

**2 BR / TYPE 2A**

SUITE	1,417.93 SQ.FT.	131.73 SQ.M.
TERRACE	137.56 SQ.FT.	12.78 SQ.M.
<b>TOTAL</b>	<b>1,555.49 SQ.FT.</b>	<b>144.51 SQ.M.</b>

SUITE 03

**2 BR / TYPE 1A**

SUITE	1,366.26 SQ.FT.	126.93 SQ.M.
TERRACE	206.99 SQ.FT.	19.23 SQ.M.
<b>TOTAL</b>	<b>1,573.25 SQ.FT.</b>	<b>146.16 SQ.M.</b>

SUITE 01

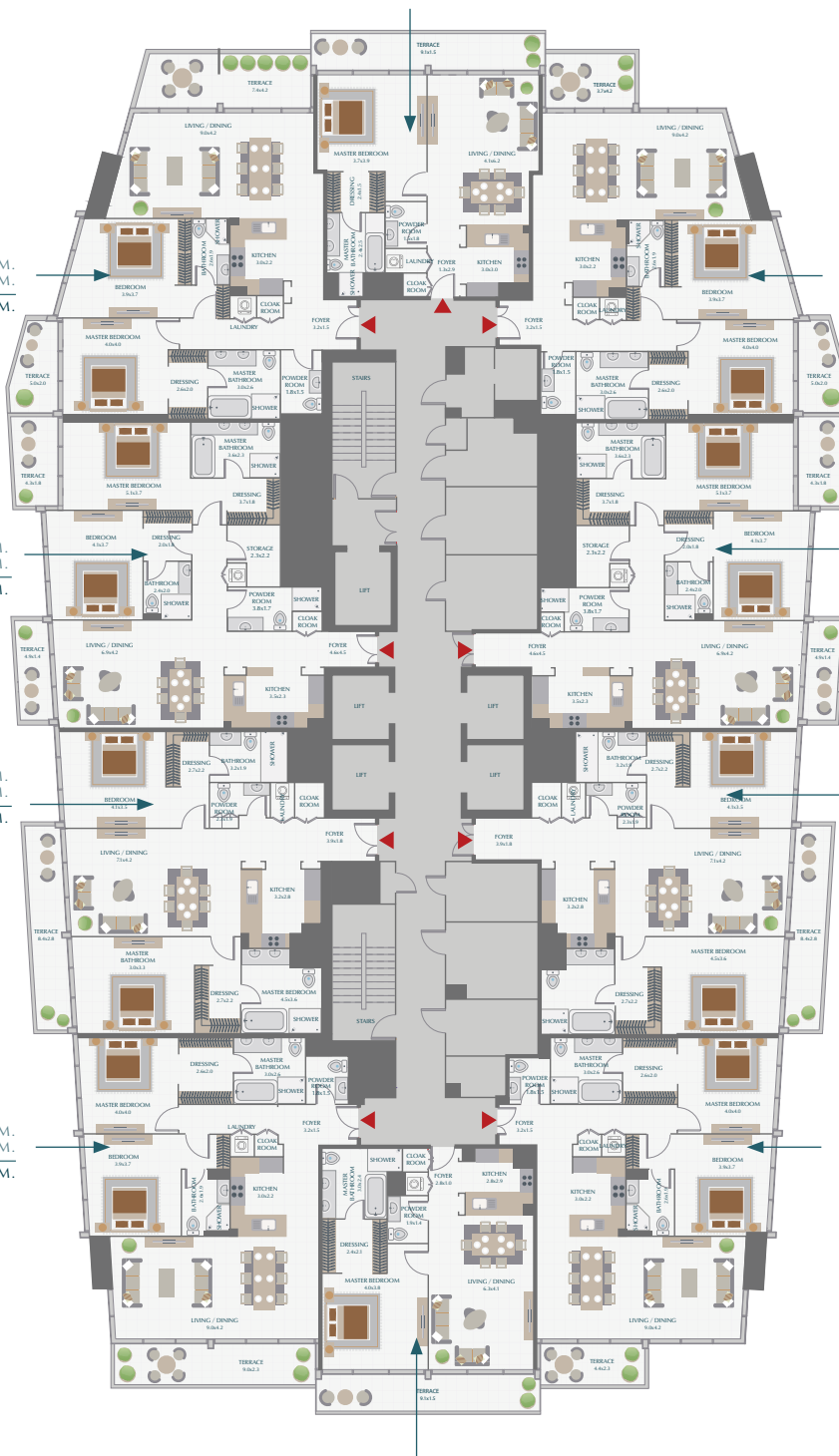
**2 BR / TYPE 1B**

SUITE	1,366.26 SQ.FT.	126.93 SQ.M.
TERRACE	113.02 SQ.FT.	10.50 SQ.M.
<b>TOTAL</b>	<b>1,479.28 SQ.FT.</b>	<b>137.43 SQ.M.</b>

SUITE 02

**1 BR / TYPE 1A**

SUITE	852.07 SQ.FT.	79.16 SQ.M.
TERRACE	146.82 SQ.FT.	13.64 SQ.M.
<b>TOTAL</b>	<b>998.89 SQ.FT.</b>	<b>92.80 SQ.M.</b>



All room dimensions are in metric and measured to structural elements and include wall finishes and construction tolerances. Calculation of suite area is measured as the area bounded by the centerline of demising or party walls separating one unit from another unit, the exterior surface of all exterior walls and the exterior surface of the corridor wall on enclosing and abutting the unit. Calculation of terrace area is measured as the area bounded by the centerlines of demising or party walls separating one unit from another unit, the outermost face of the enclosing guard and the external face of the site abutting the balcony. All materials, dimensions & drawings features and amenities are approximate at the time of printing. Information subject to change without notice. Actual suite areas may vary from the stated area. Drawings are not to scale E&EO. The developer reserves the right to make revisions.

# PARK GATE RESIDENCES TOWER A - LEVEL 19



## SUITE 06

### 1 BR / TYPE 4A

SUITE	844.11 SQ.FT.	78.42 SQ.M.
TERRACE	145.42 SQ.FT.	13.51 SQ.M.
<b>TOTAL</b>	<b>989.53 SQ.FT.</b>	<b>91.93 SQ.M.</b>

## SUITE 05

### 3 BR / TYPE 3B

SUITE	1,817.06 SQ.FT.	168.81 SQ.M.
TERRACE	258.44 SQ.FT.	24.01 SQ.M.
<b>TOTAL</b>	<b>2,075.50 SQ.FT.</b>	<b>192.82 SQ.M.</b>

## SUITE 07

### 3 BR / TYPE 3C

SUITE	1,817.06 SQ.FT.	168.81 SQ.M.
TERRACE	180.51 SQ.FT.	16.77 SQ.M.
<b>TOTAL</b>	<b>1,997.57 SQ.FT.</b>	<b>185.58 SQ.M.</b>

## SUITE 04

### 3 BR / TYPE 2A

SUITE	2,021.36 SQ.FT.	187.79 SQ.M.
TERRACE	142.73 SQ.FT.	13.26 SQ.M.
<b>TOTAL</b>	<b>2,164.09 SQ.FT.</b>	<b>201.05 SQ.M.</b>

## SUITE 08

### 3 BR / TYPE 2A

SUITE	2,022.00 SQ.FT.	187.85 SQ.M.
TERRACE	142.73 SQ.FT.	13.26 SQ.M.
<b>TOTAL</b>	<b>2,164.73 SQ.FT.</b>	<b>201.11 SQ.M.</b>

## SUITE 03

### 3 BR / TYPE 1A

SUITE	1,790.36 SQ.FT.	166.33 SQ.M.
TERRACE	270.82 SQ.FT.	25.16 SQ.M.
<b>TOTAL</b>	<b>2,061.18 SQ.FT.</b>	<b>191.49 SQ.M.</b>

## SUITE 01

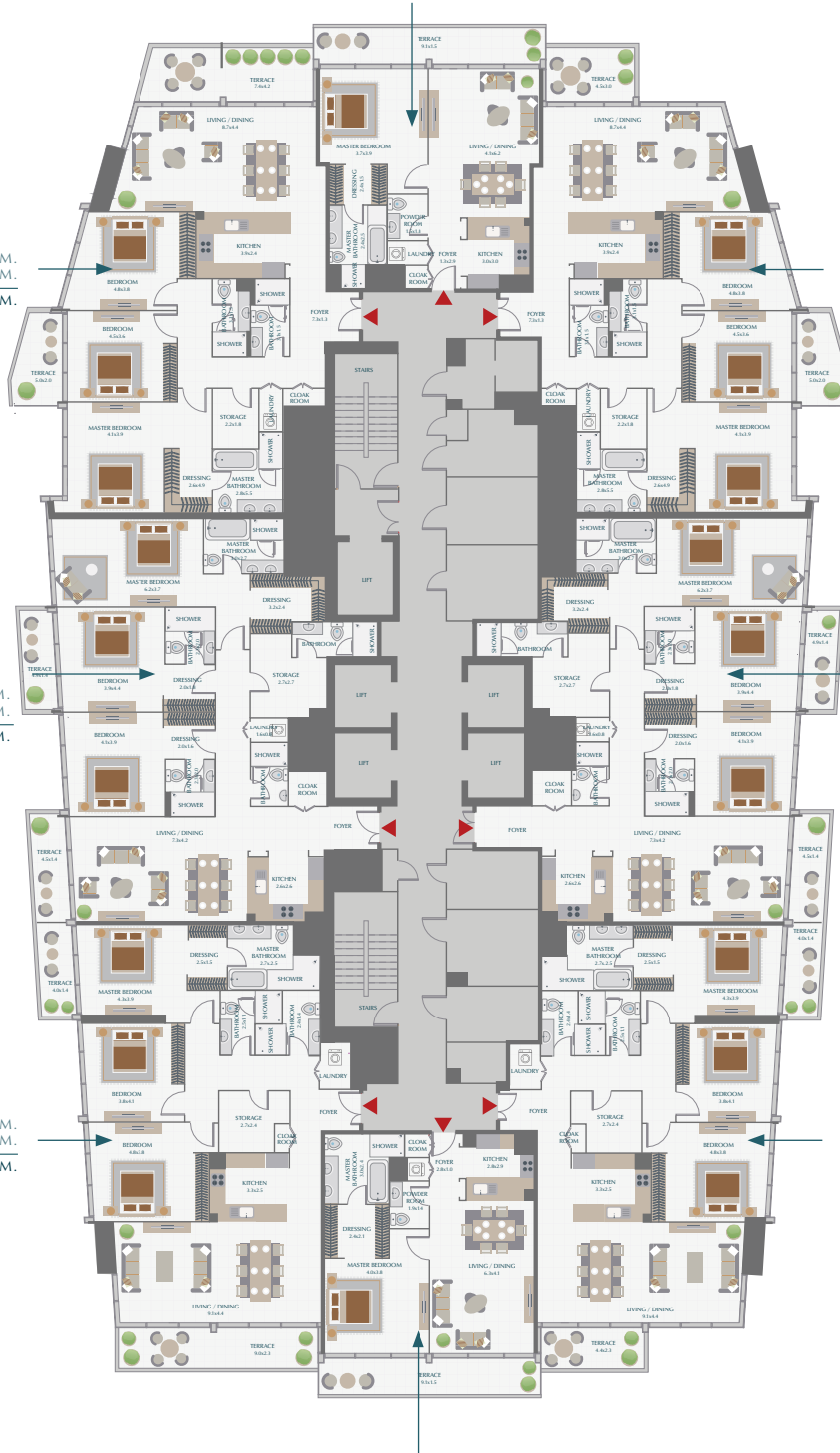
### 3 BR / TYPE 1B

SUITE	1,790.36 SQ.FT.	166.33 SQ.M.
TERRACE	177.00 SQ.FT.	16.43 SQ.M.
<b>TOTAL</b>	<b>1,967.11 SQ.FT.</b>	<b>182.75 SQ.M.</b>

## SUITE 02

### 1 BR / TYPE 1A

SUITE	852.07 SQ.FT.	79.16 SQ.M.
TERRACE	146.82 SQ.FT.	13.64 SQ.M.
<b>TOTAL</b>	<b>998.89 SQ.FT.</b>	<b>92.80 SQ.M.</b>



All room dimensions are in metric and measured to structural elements and exclude wall finishes and construction tolerances. Calculation of suite area is measured as the area bounded by the centerline of demising or party walls separating one unit from another unit, the exterior surface of all exterior walls and the exterior surface of the corridor wall on enclosing and abutting the unit. Calculation of terrace area is measured as the area bounded by the centerlines of demising or party walls separating one unit from another unit, the outermost face of the enclosing guard and the external face of the site abutting the balcony. All materials, dimensions & drawings features and amenities are approximate at the time of printing. Information subject to change without notice. Actual suite areas may vary from the stated area. Drawings are not to scale E&O. The developer reserves the right to make revisions.

# PARK GATE RESIDENCES

## TOWER A - LEVEL 20, 22, 23, 25, 26



SUITE 06

1 BR / TYPE 4A

SUITE	844.11 SQ.FT.	78.42 SQ.M.
TERRACE	145.42 SQ.FT.	13.51 SQ.M.
<b>TOTAL</b>	<b>989.53 SQ.FT.</b>	<b>91.93 SQ.M.</b>

SUITE 05

3 BR / TYPE 3A

SUITE	1,816.84 SQ.FT.	168.79 SQ.M.
TERRACE	343.05 SQ.FT.	31.87 SQ.M.
<b>TOTAL</b>	<b>2,159.89 SQ.FT.</b>	<b>200.66 SQ.M.</b>

SUITE 07

3 BR / TYPE 3A

SUITE	1,816.84 SQ.FT.	168.79 SQ.M.
TERRACE	343.05 SQ.FT.	31.87 SQ.M.
<b>TOTAL</b>	<b>2,159.89 SQ.FT.</b>	<b>200.66 SQ.M.</b>

SUITE 04

3 BR / TYPE 2A

SUITE	2,021.36 SQ.FT.	187.79 SQ.M.
TERRACE	142.73 SQ.FT.	13.26 SQ.M.
<b>TOTAL</b>	<b>2,164.09 SQ.FT.</b>	<b>201.05 SQ.M.</b>

SUITE 08

3 BR / TYPE 2A

SUITE	2,022.00 SQ.FT.	187.85 SQ.M.
TERRACE	142.62 SQ.FT.	13.25 SQ.M.
<b>TOTAL</b>	<b>2,164.62 SQ.FT.</b>	<b>201.10 SQ.M.</b>

SUITE 03

3 BR / TYPE 1A

SUITE	1,790.25 SQ.FT.	166.32 SQ.M.
TERRACE	270.71 SQ.FT.	25.15 SQ.M.
<b>TOTAL</b>	<b>2,060.97 SQ.FT.</b>	<b>191.47 SQ.M.</b>

SUITE 01

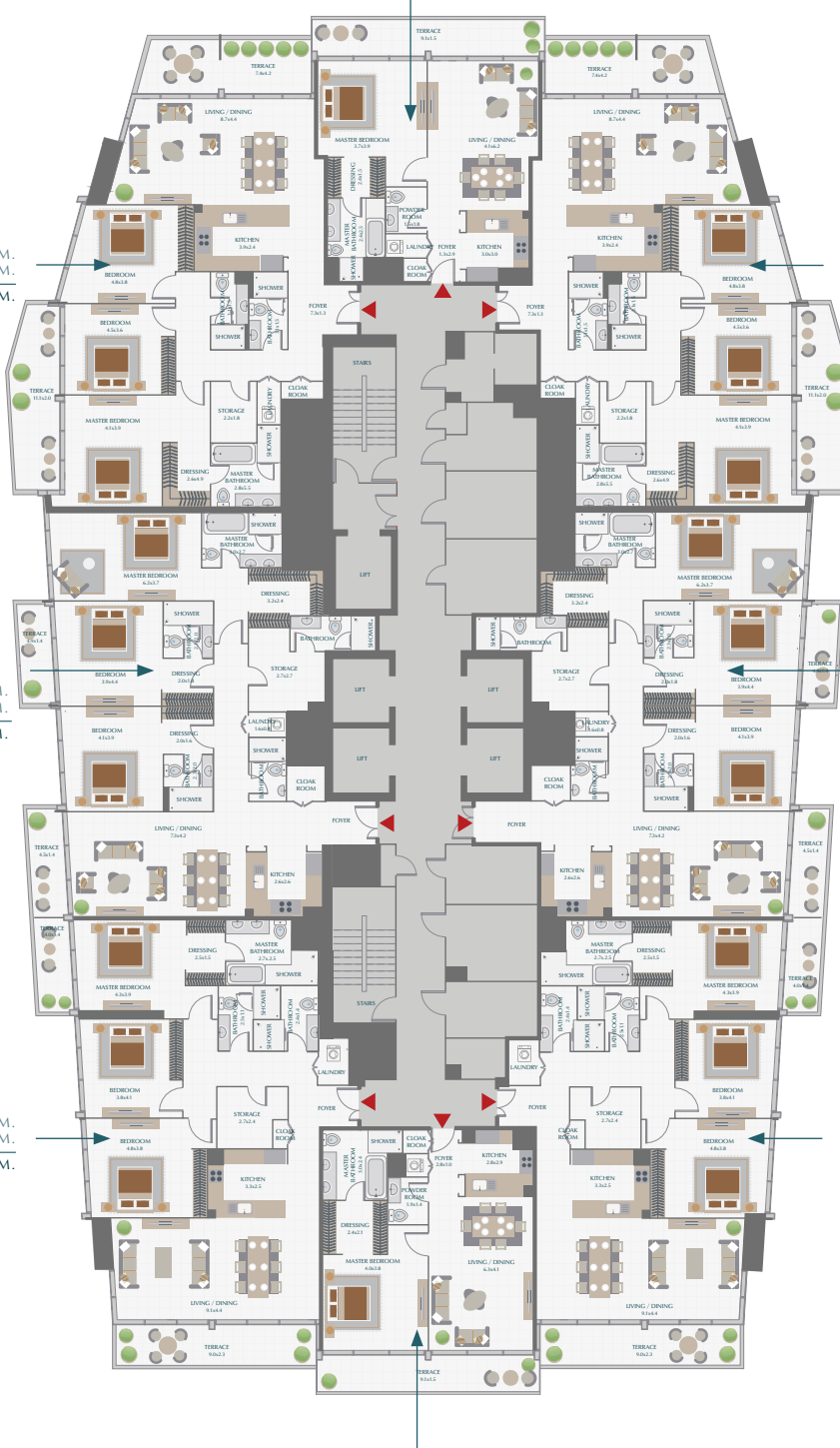
3 BR / TYPE 1A

SUITE	1,790.25 SQ.FT.	166.32 SQ.M.
TERRACE	270.71 SQ.FT.	25.15 SQ.M.
<b>TOTAL</b>	<b>2,060.97 SQ.FT.</b>	<b>191.47 SQ.M.</b>

SUITE 02

1 BR / TYPE 1A

SUITE	852.07 SQ.FT.	79.16 SQ.M.
TERRACE	146.82 SQ.FT.	13.64 SQ.M.
<b>TOTAL</b>	<b>998.89 SQ.FT.</b>	<b>92.80 SQ.M.</b>



All room dimensions are in metric and measured to structural elements and exclude wall finishes and construction tolerances. Calculation of suite area is measured as the area bounded by the centerline of demising or party walls separating one unit from another unit, the exterior surface of all exterior walls and the exterior surface of the corridor wall on enclosing and abutting the unit. Calculation of terrace area is measured as the area bounded by the centerlines of demising or party walls separating one unit from another unit, the outermost face of the enclosing guard and the external face of the site abutting the balcony. All materials, dimensions & drawings features and amenities are approximate at the time of printing. Information subject to change without notice. Actual suite areas may vary from the stated area. Drawings are not to scale E&EO. The developer reserves the right to make revisions.

# PARK GATE RESIDENCES TOWER A - LEVEL 21



## SUITE 06

### 1 BR / TYPE 4A

SUITE	844.11 SQ.FT.	78.42 SQ.M.
TERRACE	145.42 SQ.FT.	13.51 SQ.M.
<b>TOTAL</b>	<b>989.53 SQ.FT.</b>	<b>91.93 SQ.M.</b>

## SUITE 05

### 3 BR / TYPE 3D

SUITE	1,816.84 SQ.FT.	168.79 SQ.M.
TERRACE	265.01 SQ.FT.	24.62 SQ.M.
<b>TOTAL</b>	<b>2,081.85 SQ.FT.</b>	<b>193.41 SQ.M.</b>

## SUITE 07

### 3 BR / TYPE 3A

SUITE	1,816.84 SQ.FT.	168.79 SQ.M.
TERRACE	343.05 SQ.FT.	31.87 SQ.M.
<b>TOTAL</b>	<b>2,159.89 SQ.FT.</b>	<b>200.66 SQ.M.</b>

## SUITE 04

### 3 BR / TYPE 2A

SUITE	2,021.36 SQ.FT.	187.79 SQ.M.
TERRACE	142.73 SQ.FT.	13.26 SQ.M.
<b>TOTAL</b>	<b>2,164.09 SQ.FT.</b>	<b>201.05 SQ.M.</b>

## SUITE 08

### 3 BR / TYPE 2A

SUITE	2,022.00 SQ.FT.	187.85 SQ.M.
TERRACE	142.62 SQ.FT.	13.25 SQ.M.
<b>TOTAL</b>	<b>2,164.62 SQ.FT.</b>	<b>201.10 SQ.M.</b>

## SUITE 03

### 3 BR / TYPE 1B

SUITE	1,790.25 SQ.FT.	166.32 SQ.M.
TERRACE	176.85 SQ.FT.	16.43 SQ.M.
<b>TOTAL</b>	<b>1,967.11 SQ.FT.</b>	<b>182.75 SQ.M.</b>

## SUITE 01

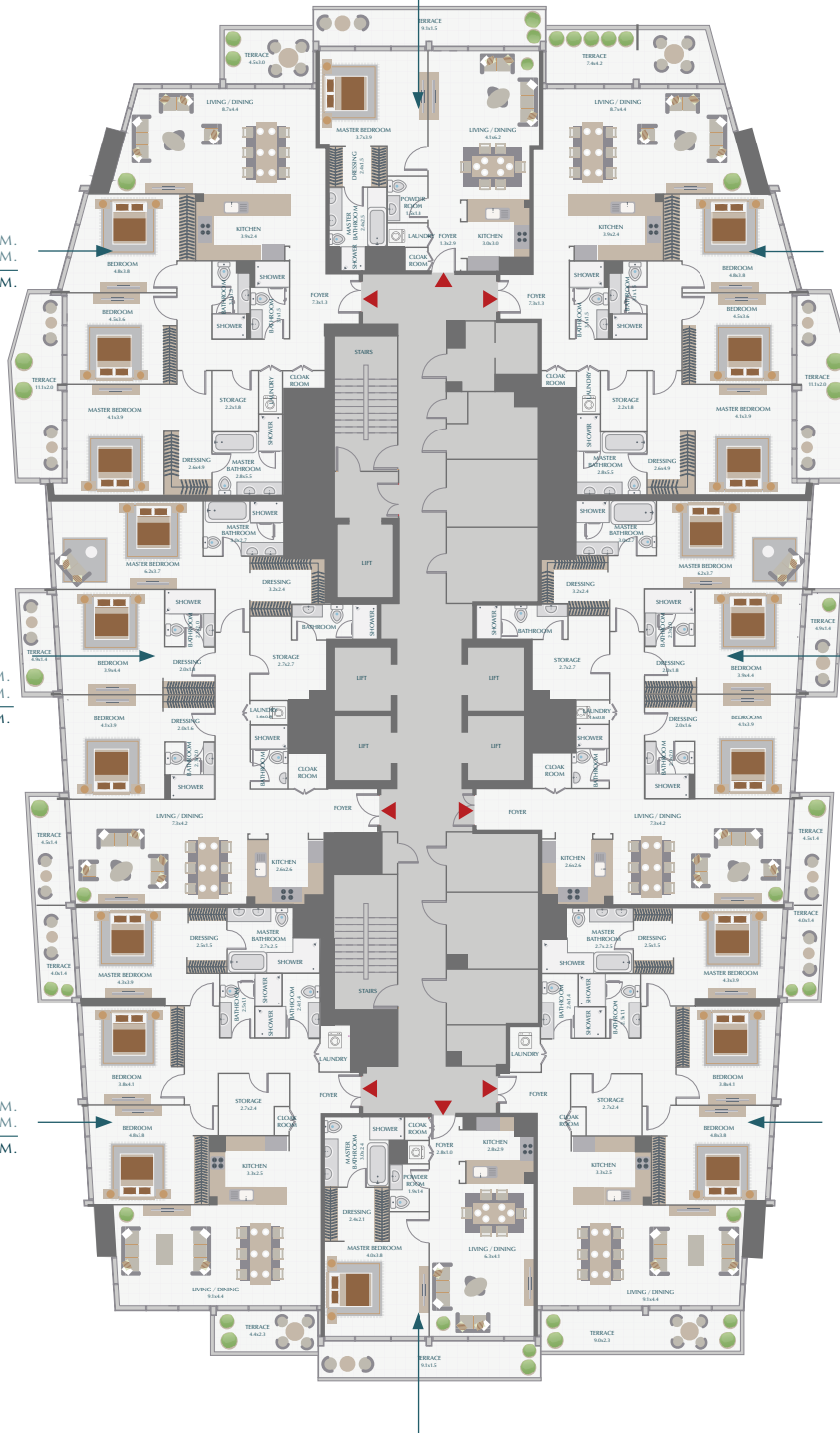
### 3 BR / TYPE 1A

SUITE	1,790.25 SQ.FT.	166.32 SQ.M.
TERRACE	270.71 SQ.FT.	25.15 SQ.M.
<b>TOTAL</b>	<b>2,060.97 SQ.FT.</b>	<b>191.47 SQ.M.</b>

## SUITE 02

### 1 BR / TYPE 1A

SUITE	852.18 SQ.FT.	79.17 SQ.M.
TERRACE	146.82 SQ.FT.	13.64 SQ.M.
<b>TOTAL</b>	<b>999.00 SQ.FT.</b>	<b>92.81 SQ.M.</b>



All room dimensions are in metric and measured to structural elements and exclude wall finishes and construction tolerances. Calculation of suite area is measured as the area bounded by the centerline of demising or party walls separating one unit from another unit, the exterior surface of all exterior walls and the exterior surface of the corridor wall on enclosing and abutting the unit. Calculation of terrace area is measured as the area bounded by the centerlines of demising or party walls separating one unit from another unit, the outermost face of the enclosing guard and the external face of the site abutting the balcony. All materials, dimensions & drawings features and amenities are approximate at the time of printing. Information subject to change without notice. Actual suite areas may vary from the stated area. Drawings are not to scale E&EO. The developer reserves the right to make revisions.

# PARK GATE RESIDENCES TOWER A - LEVEL 24



SUITE 06

**1 BR / TYPE 4A**

SUITE	844.11 SQ.FT.	78.42 SQ.M.
TERRACE	145.42 SQ.FT.	13.51 SQ.M.
<b>TOTAL</b>	<b>989.53 SQ.FT.</b>	<b>91.93 SQ.M.</b>

SUITE 05

**3 BR / TYPE 3A**

SUITE	1,816.84 SQ.FT.	168.79 SQ.M.
TERRACE	343.05 SQ.FT.	31.87 SQ.M.
<b>TOTAL</b>	<b>2,159.89 SQ.FT.</b>	<b>200.66 SQ.M.</b>

SUITE 07

**3 BR / TYPE 3A**

SUITE	1,816.84 SQ.FT.	168.79 SQ.M.
TERRACE	343.05 SQ.FT.	31.87 SQ.M.
<b>TOTAL</b>	<b>2,159.89 SQ.FT.</b>	<b>200.66 SQ.M.</b>

SUITE 04

**3 BR / TYPE 2A**

SUITE	2,021.36 SQ.FT.	187.79 SQ.M.
TERRACE	142.73 SQ.FT.	13.26 SQ.M.
<b>TOTAL</b>	<b>2,164.09 SQ.FT.</b>	<b>201.05 SQ.M.</b>

SUITE 08

**3 BR / TYPE 2A**

SUITE	2,022.00 SQ.FT.	187.85 SQ.M.
TERRACE	142.62 SQ.FT.	13.25 SQ.M.
<b>TOTAL</b>	<b>2,164.62 SQ.FT.</b>	<b>201.10 SQ.M.</b>

SUITE 03

**3 BR / TYPE 1A**

SUITE	1,790.25 SQ.FT.	166.32 SQ.M.
TERRACE	270.71 SQ.FT.	25.15 SQ.M.
<b>TOTAL</b>	<b>2,060.97 SQ.FT.</b>	<b>191.47 SQ.M.</b>

SUITE 01

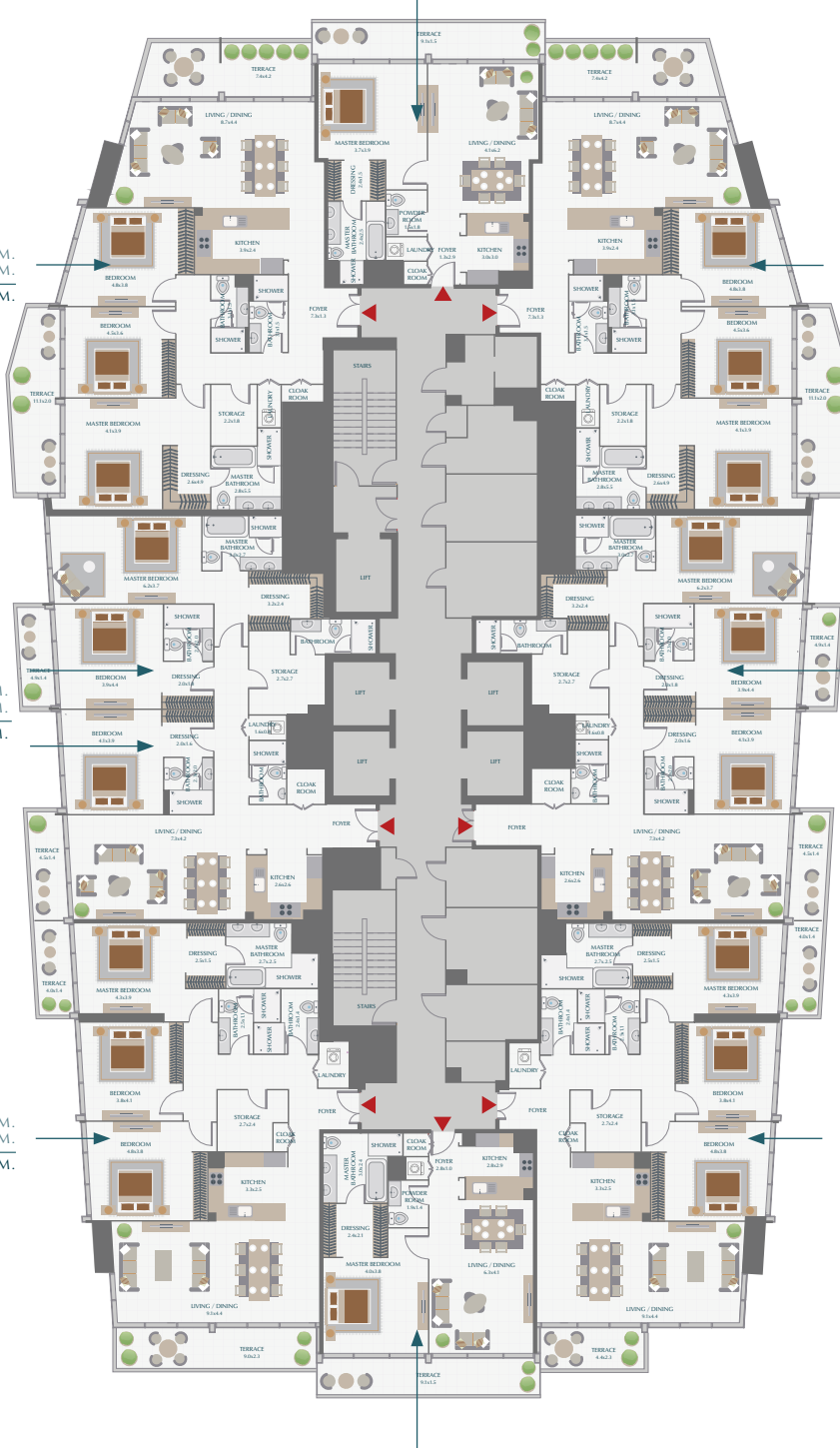
**3 BR / TYPE 1B**

SUITE	1,790.25 SQ.FT.	166.32 SQ.M.
TERRACE	176.85 SQ.FT.	16.43 SQ.M.
<b>TOTAL</b>	<b>1,967.11 SQ.FT.</b>	<b>182.75 SQ.M.</b>

SUITE 02

**1 BR / TYPE 1A**

SUITE	852.18 SQ.FT.	79.17 SQ.M.
TERRACE	146.82 SQ.FT.	13.64 SQ.M.
<b>TOTAL</b>	<b>999.00 SQ.FT.</b>	<b>92.81 SQ.M.</b>



All room dimensions are in metric and measured to structural elements and exclude wall finishes and construction tolerances. Calculation of suite area is measured as the area bounded by the centerline of demising or party walls separating one unit from another unit, the exterior surface of all exterior walls and the exterior surface of the corridor wall on enclosing and abutting the unit. Calculation of terrace area is measured as the area bounded by the centerlines of demising or party walls separating one unit from another unit, the outermost face of the enclosing guard and the external face of the site abutting the balcony. All materials, dimensions & drawings features and amenities are approximate at the time of printing. Information subject to change without notice. Actual suite areas may vary from the stated area. Drawings are not to scale E&O. The developer reserves the right to make revisions.

# PARK GATE RESIDENCES TOWER A - LEVEL 27



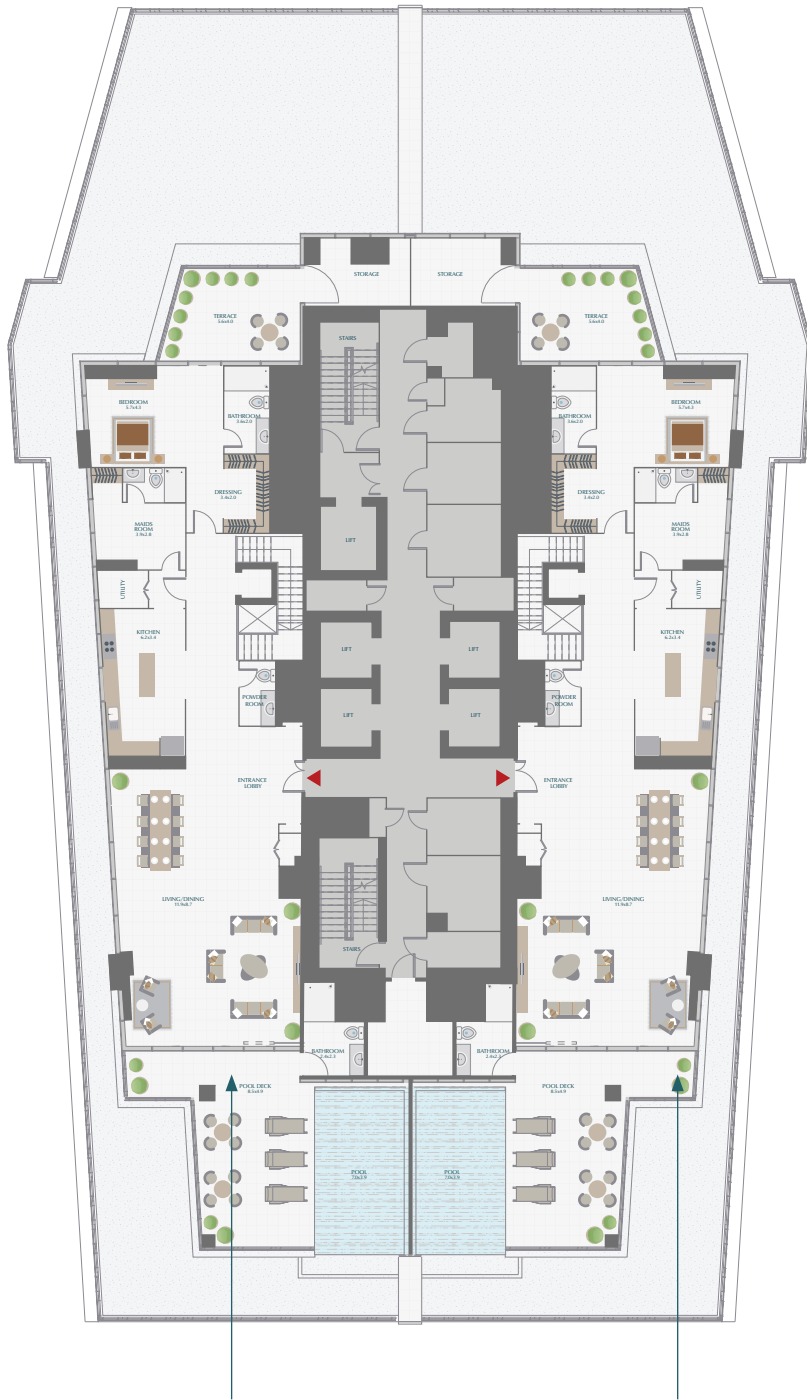
**SUITE 01  
PENTHOUSE**

<b>4 BR PENTHOUSE</b>		
SUITE	5,875.48 SQ.FT.	545.85 SQ.M.
TERRACE	4,996.39 SQ.FT.	464.18 SQ.M.
<b>TOTAL</b>	<b>10,871.88 SQ.FT.</b>	<b>1,010.03 SQ.M.</b>

**SUITE 02  
PENTHOUSE**

<b>4 BR PENTHOUSE</b>		
SUITE	5,907.13 SQ.FT.	548.79 SQ.M.
TERRACE	4,996.50 SQ.FT.	464.19 SQ.M.
<b>TOTAL</b>	<b>10,903.63 SQ.FT.</b>	<b>1,012.98 SQ.M.</b>

# PARK GATE RESIDENCES TOWER A - LEVEL 28



SUITE 01  
PENTHOUSE

**4 BR PENTHOUSE**

SUITE	5,875.48 SQ.FT.	545.85 SQ.M.
TERRACE	4,996.39 SQ.FT.	464.18 SQ.M.
<b>TOTAL</b>	<b>10,871.88 SQ.FT.</b>	<b>1,010.03 SQ.M.</b>

SUITE 02  
PENTHOUSE

**4 BR PENTHOUSE**

SUITE	5,907.13 SQ.FT.	548.79 SQ.M.
TERRACE	4,996.50 SQ.FT.	464.19 SQ.M.
<b>TOTAL</b>	<b>10,903.63 SQ.FT.</b>	<b>1,012.98 SQ.M.</b>

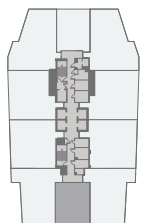
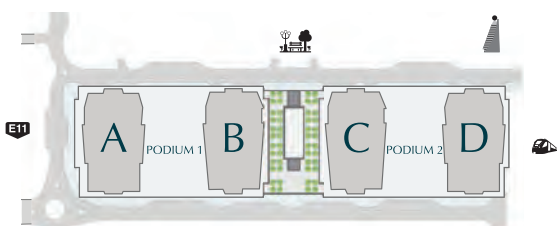
All room dimensions are in metric and measured to structural elements and exclude wall finishes and construction tolerances. Calculation of suite area is measured as the area bounded by the centerline of demising or party walls separating one unit from another unit, the exterior surface of all exterior walls and the exterior surface of the corridor wall on enclosing and abutting the unit. Calculation of terrace area is measured as the area bounded by the centerlines of demising or party walls separating one unit from another unit, the outermost face of the enclosing guard and the external face of the site abutting the balcony. All materials, dimensions & drawings features and amenities are approximate at the time of printing. Information subject to change without notice. Actual suite areas may vary from the stated area. Drawings are not to scale E&O. The developer reserves the right to make revisions.

# PARK GATE RESIDENCES TOWER A



## 1 BR / TYPE 1A

SUITE	852.07 SQ.FT.	79.16 SQ.M.
TERRACE	146.82 SQ.FT.	13.64 SQ.M.
<b>TOTAL</b>	<b>998.89 SQ.FT.</b>	<b>92.80 SQ.M.</b>



TOWERS A & D ARE IDENTICAL AND MIRRORED, AND TOWERS B & C ARE IDENTICAL AND MIRRORED.

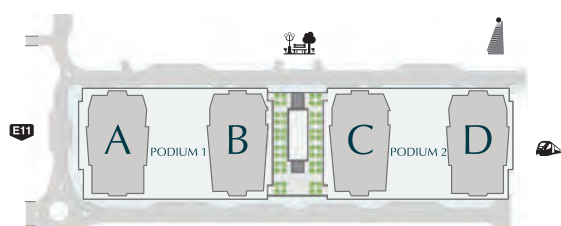
All room dimensions are in metric and measured to structural elements and exclude wall finishes and construction tolerances. Calculation of suite area is measured as the area bounded by the centerline of demising or party walls separating one unit from another unit, the exterior surface of all exterior walls and the exterior surface of the corridor wall on enclosing and abutting the unit. Calculation of Terrace area is measured as the area bounded by the centerlines of demising or party walls separating one unit from another unit, the outermost face of the enclosing guard and the external face of the site abutting the balcony. All materials, dimensions & drawings features and amenities are approximate at the time of printing. Information subject to change without notice. Actual suite areas may vary from the stated area. Drawings are not to scale E&O. The developer reserves the right to make revisions.

# PARK GATE RESIDENCES TOWER A

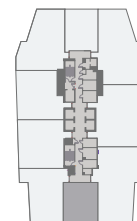


## 1 BR / TYPE 1B

SUITE	852.18 SQ.FT.	79.17 SQ.M.
TERRACE	151.45 SQ.FT.	14.07 SQ.M.
<b>TOTAL</b>	<b>1,003.63 SQ.FT.</b>	<b>93.24 SQ.M.</b>



TOWERS A & D ARE IDENTICAL AND MIRRORED, AND TOWERS B & C ARE IDENTICAL AND MIRRORED.



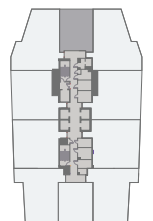
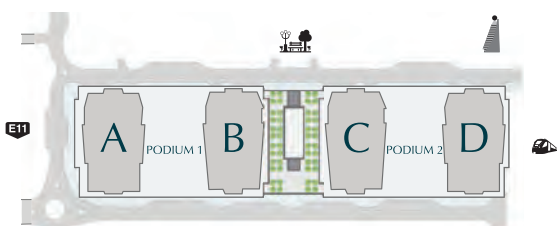
All room dimensions are in metric and measured to structural elements and exclude wall finishes and construction tolerances. Calculation of suite area is measured as the area bounded by the centerline of demising or party walls separating one unit from another unit, the exterior surface of all exterior walls and the exterior surface of the corridor wall on enclosing and abutting the unit. Calculation of Terrace area is measured as the area bounded by the centerlines of demising or party walls separating one unit from another unit, the outermost face of the enclosing guard and the external face of the site abutting the balcony. All materials, dimensions & drawings features and amenities are approximate at the time of printing. Information subject to change without notice. Actual suite areas may vary from the stated area. Drawings are not to scale E&O. The developer reserves the right to make revisions.

# PARK GATE RESIDENCES TOWER A



## 1 BR / TYPE 4A

SUITE	844.11 SQ.FT.	78.42 SQ.M.
TERRACE	145.42 SQ.FT.	13.51 SQ.M.
<b>TOTAL</b>	<b>989.53 SQ.FT.</b>	<b>91.93 SQ.M.</b>



TOWERS A & D ARE IDENTICAL AND MIRRORED, AND TOWERS B & C ARE IDENTICAL AND MIRRORED.

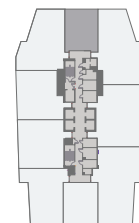
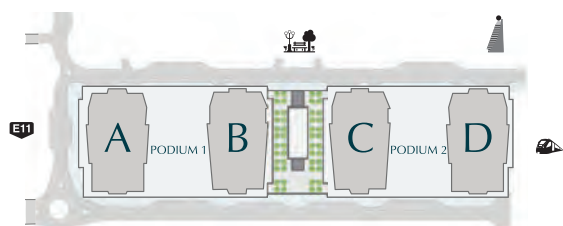
All room dimensions are in metric and measured to structural elements and exclude wall finishes and construction tolerances. Calculation of suite area is measured as the area bounded by the centerline of demising or party walls separating one unit from another unit, the exterior surface of all exterior walls and the exterior surface of the corridor wall on enclosing and abutting the unit. Calculation of Terrace area is measured as the area bounded by the centerlines of demising or party walls separating one unit from another unit, the outermost face of the enclosing guard and the external face of the site abutting the balcony. All materials, dimensions & drawings features and amenities are approximate at the time of printing. Information subject to change without notice. Actual suite areas may vary from the stated area. Drawings are not to scale E&O. The developer reserves the right to make revisions.

# PARK GATE RESIDENCES TOWER A



## 1 BR / TYPE 4C

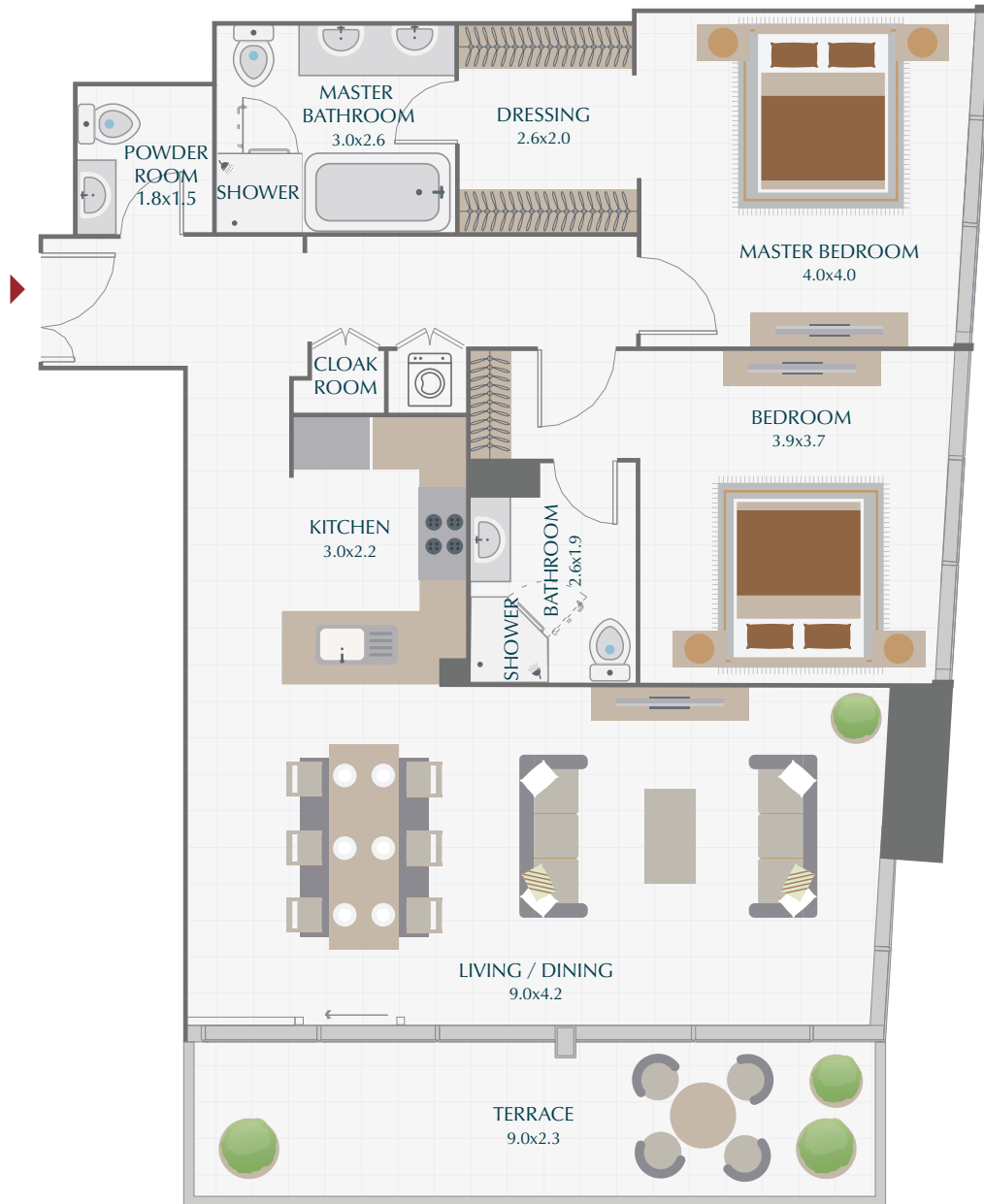
SUITE	844.11 SQ.FT.	78.42 SQ.M.
TERRACE	154.46 SQ.FT.	14.35 SQ.M.
<b>TOTAL</b>	<b>998.57 SQ.FT.</b>	<b>92.77 SQ.M.</b>



TOWERS A & D ARE IDENTICAL AND MIRRORED, AND TOWERS B & C ARE IDENTICAL AND MIRRORED.

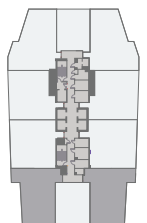
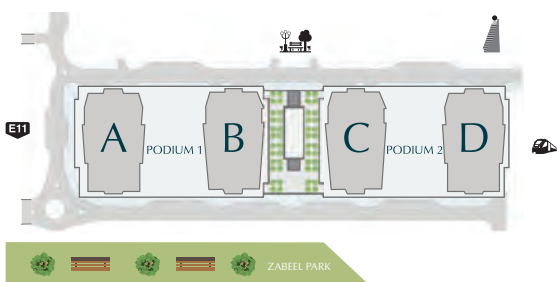
All room dimensions are in metric and measured to structural elements and exclude wall finishes and construction tolerances. Calculation of suite area is measured as the area bounded by the centerline of demising or party walls separating one unit from another unit, the exterior surface of all exterior walls and the exterior surface of the corridor wall on enclosing and abutting the unit. Calculation of Terrace area is measured as the area bounded by the centerlines of demising or party walls separating one unit from another unit, the outermost face of the enclosing guard and the external face of the site abutting the balcony. All materials, dimensions & drawings features and amenities are approximate at the time of printing. Information subject to change without notice. Actual suite areas may vary from the stated area. Drawings are not to scale E&O. The developer reserves the right to make revisions.

# PARK GATE RESIDENCES TOWER A



## 2 BR / TYPE 1A

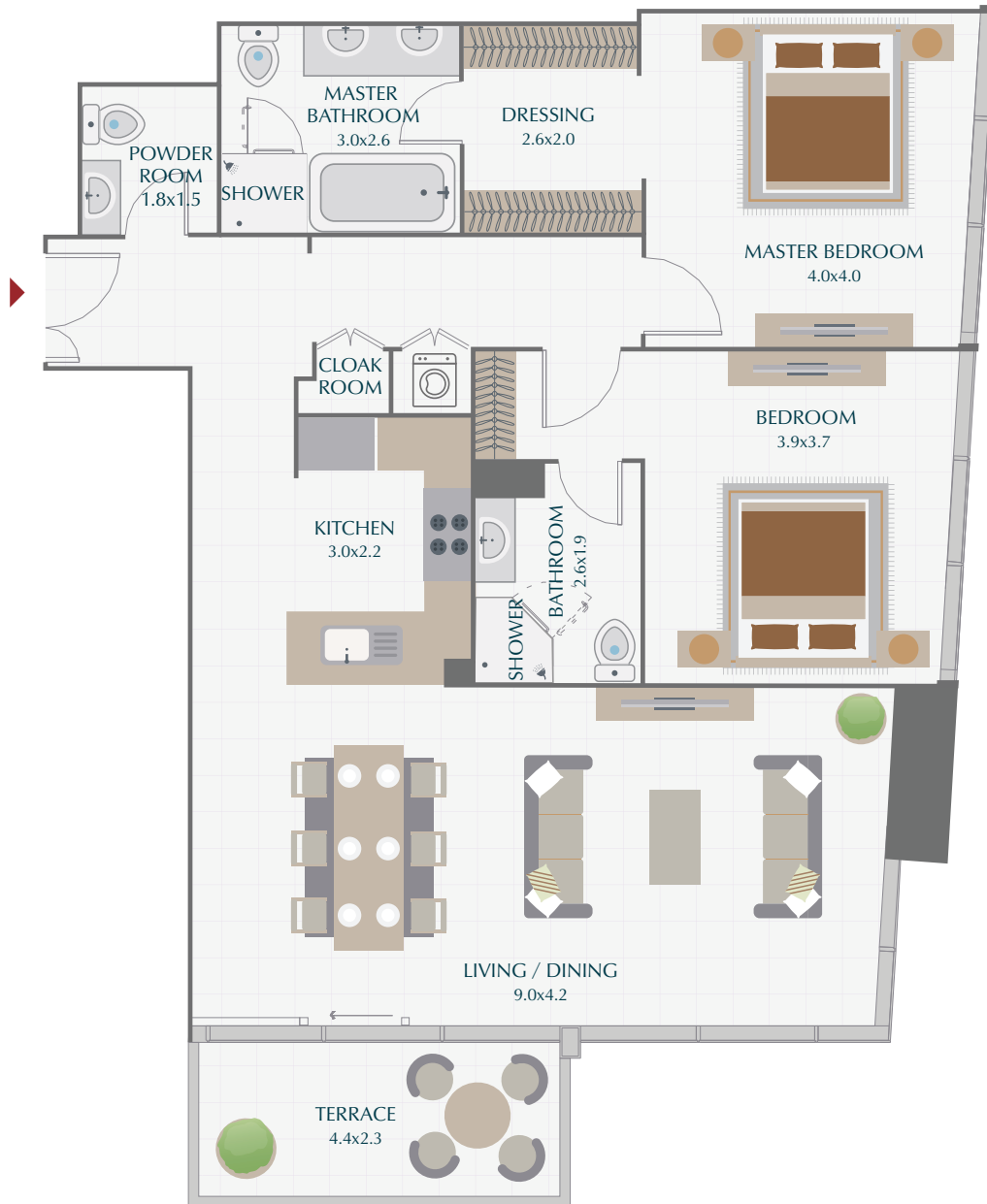
SUITE	1,366.26 SQ.FT.	126.93 SQ.M.
TERRACE	206.99 SQ.FT.	19.23 SQ.M.
<b>TOTAL</b>	<b>1,573.25 SQ.FT.</b>	<b>146.16 SQ.M.</b>



TOWERS A & D ARE IDENTICAL AND MIRRORED, AND TOWERS B & C ARE IDENTICAL AND MIRRORED.

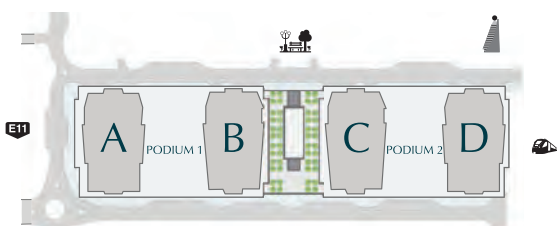
All room dimensions are in metric and measured to structural elements and exclude wall finishes and construction tolerances. Calculation of suite area is measured as the area bounded by the centerline of demising or party walls separating one unit from another unit, the exterior surface of all exterior walls and the exterior surface of the corridor wall on enclosing and abutting the unit. Calculation of Terrace area is measured as the area bounded by the centerlines of demising or party walls separating one unit from another unit, the outermost face of the enclosing guard and the external face of the site abutting the balcony. All materials, dimensions & drawings features and amenities are approximate at the time of printing. Information subject to change without notice. Actual suite areas may vary from the stated area. Drawings are not to scale E&O. The developer reserves the right to make revisions.

# PARK GATE RESIDENCES TOWER A

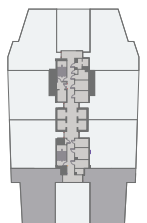


## 2 BR / TYPE 1B

SUITE	1,366.26 SQ.FT.	126.93 SQ.M.
TERRACE	113.02 SQ.FT.	10.50 SQ.M.
<b>TOTAL</b>	<b>1,479.28 SQ.FT.</b>	<b>137.43 SQ.M.</b>

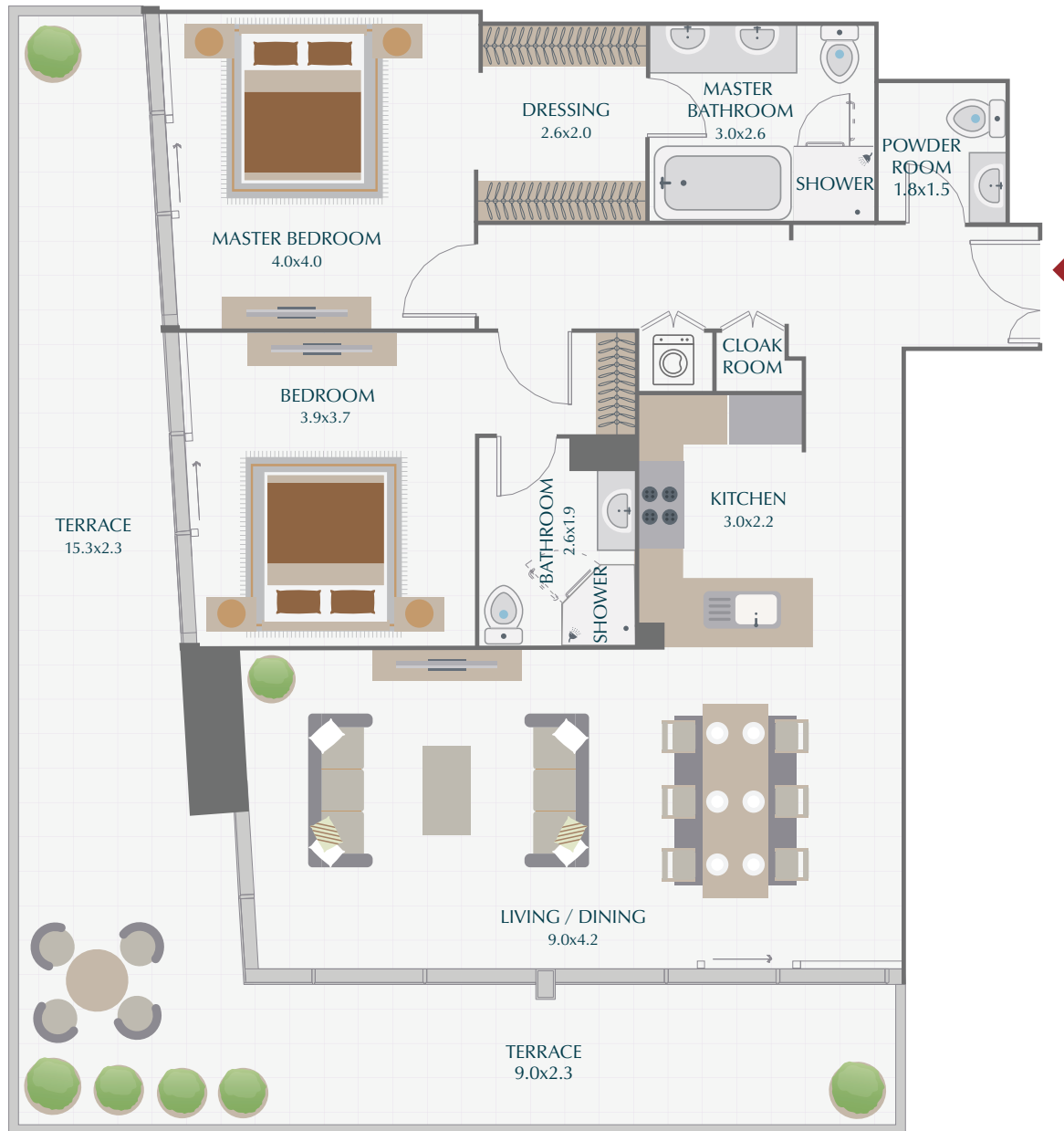


TOWERS A & D ARE IDENTICAL AND MIRRORED, AND TOWERS B & C ARE IDENTICAL AND MIRRORED.



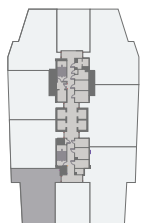
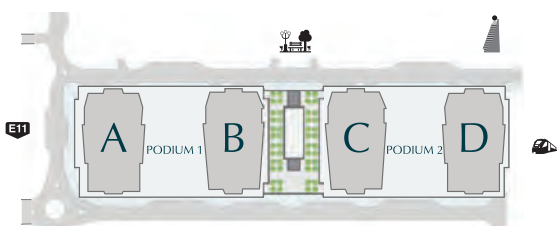
All room dimensions are in metric and measured to structural elements and exclude wall finishes and construction tolerances. Calculation of suite area is measured as the area bounded by the centerline of demising or party walls separating one unit from another unit, the exterior surface of all exterior walls and the exterior surface of the corridor wall on enclosing and abutting the unit. Calculation of Terrace area is measured as the area bounded by the centerlines of demising or party walls separating one unit from another unit, the outermost face of the enclosing guard and the external face of the site abutting the balcony. All materials, dimensions & drawings features and amenities are approximate at the time of printing. Information subject to change without notice. Actual suite areas may vary from the stated area. Drawings are not to scale E&O. The developer reserves the right to make revisions.

# PARK GATE RESIDENCES TOWER A



## 2 BR / TYPE 1C

SUITE	1,366.05 SQ.FT.	126.91 SQ.M.
TERRACE	680.28 SQ.FT.	63.20 SQ.M.
<b>TOTAL</b>	<b>2,046.33 SQ.FT.</b>	<b>190.11 SQ.M.</b>



TOWERS A & D ARE IDENTICAL AND MIRRORED, AND TOWERS B & C ARE IDENTICAL AND MIRRORED.

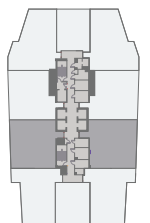
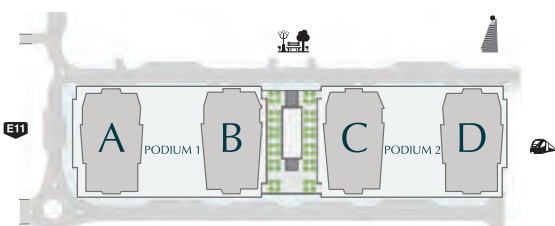
All room dimensions are in metric and measured to structural elements and exclude wall finishes and construction tolerances. Calculation of suite area is measured as the area bounded by the centerline of demising or party walls separating one unit from another unit, the exterior surface of all exterior walls and the exterior surface of the corridor wall on enclosing and abutting the unit. Calculation of Terrace area is measured as the area bounded by the centerlines of demising or party walls separating one unit from another unit, the outermost face of the enclosing guard and the external face of the site abutting the balcony. All materials, dimensions & drawings features and amenities are approximate at the time of printing. Information subject to change without notice. Actual suite areas may vary from the stated area. Drawings are not to scale E&O. The developer reserves the right to make revisions.

# PARK GATE RESIDENCES TOWER A



## 2 BR / TYPE 2A

SUITE	1,417.28 SQ.FT.	131.67 SQ.M.
TERRACE	137.35 SQ.FT.	12.76 SQ.M.
<b>TOTAL</b>	<b>1,554.74 SQ.FT.</b>	<b>144.44 SQ.M.</b>



TOWERS A & D ARE IDENTICAL AND MIRRORED, AND TOWERS B & C ARE IDENTICAL AND MIRRORED.

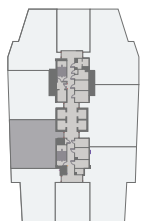
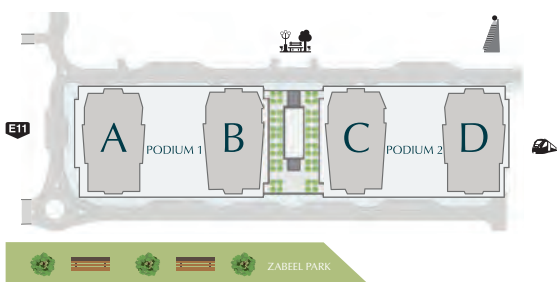
All room dimensions are in metric and measured to structural elements and exclude wall finishes and construction tolerances. Calculation of suite area is measured as the area bounded by the centerline of demising or party walls separating one unit from another unit, the exterior surface of all exterior walls and the exterior surface of the corridor wall on enclosing and abutting the unit. Calculation of Terrace area is measured as the area bounded by the centerlines of demising or party walls separating one unit from another unit, the outermost face of the enclosing guard and the external face of the site abutting the balcony. All materials, dimensions & drawings features and amenities are approximate at the time of printing. Information subject to change without notice. Actual suite areas may vary from the stated area. Drawings are not to scale E&O. The developer reserves the right to make revisions.

# PARK GATE RESIDENCES TOWER A



## 2 BR / TYPE 2B

SUITE	1,416.85 SQ.FT.	131.63 SQ.M.
TERRACE	522.80 SQ.FT.	48.57 SQ.M.
<b>TOTAL</b>	<b>1,939.66 SQ.FT.</b>	<b>180.20 SQ.M.</b>



TOWERS A & D ARE IDENTICAL AND MIRRORED, AND TOWERS B & C ARE IDENTICAL AND MIRRORED.

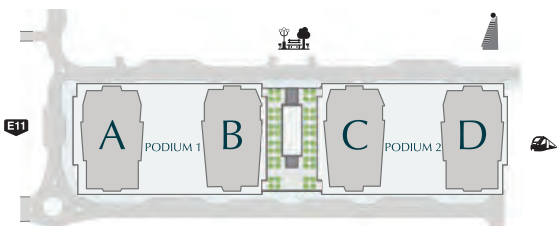
All room dimensions are in metric and measured to structural elements and exclude wall finishes and construction tolerances. Calculation of suite area is measured as the area bounded by the centerline of demising or party walls separating one unit from another unit, the exterior surface of all exterior walls and the exterior surface of the corridor wall on enclosing and abutting the unit. Calculation of Terrace area is measured as the area bounded by the centerlines of demising or party walls separating one unit from another unit, the outermost face of the enclosing guard and the external face of the site abutting the balcony. All materials, dimensions & drawings features and amenities are approximate at the time of printing. Information subject to change without notice. Actual suite areas may vary from the stated area. Drawings are not to scale E&O. The developer reserves the right to make revisions.

# PARK GATE RESIDENCES TOWER A



## 2 BR / TYPE 3A

SUITE	1,462.49 SQ.FT.	135.87 SQ.M.
TERRACE	151.56 SQ.FT.	14.08 SQ.M.
<b>TOTAL</b>	<b>1,614.05 SQ.FT.</b>	<b>149.95 SQ.M.</b>



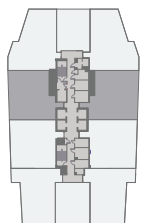
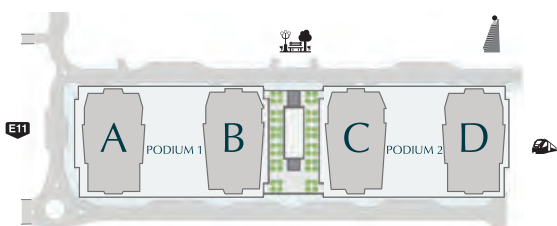
TOWERS A & D ARE IDENTICAL AND MIRRORED, AND TOWERS B & C ARE IDENTICAL AND MIRRORED.

All room dimensions are in metric and measured to structural elements and exclude wall finishes and construction tolerances. Calculation of suite area is measured as the area bounded by the centerline of demising or party walls separating one unit from another unit, the exterior surface of all exterior walls and the exterior surface of the corridor wall on enclosing and abutting the unit. Calculation of Terrace area is measured as the area bounded by the centerlines of demising or party walls separating one unit from another unit, the outermost face of the enclosing guard and the external face of the site abutting the balcony. All materials, dimensions & drawings features and amenities are approximate at the time of printing. Information subject to change without notice. Actual suite areas may vary from the stated area. Drawings are not to scale E&O. The developer reserves the right to make revisions.



## 2 BR / TYPE 3B

SUITE	1,462.49 SQ.FT.	135.87 SQ.M.
TERRACE	69.10 SQ.FT.	6.42 SQ.M.
<b>TOTAL</b>	<b>1,531.59 SQ.FT.</b>	<b>142.29 SQ.M.</b>



TOWERS A & D ARE IDENTICAL AND MIRRORED, AND TOWERS B & C ARE IDENTICAL AND MIRRORED.

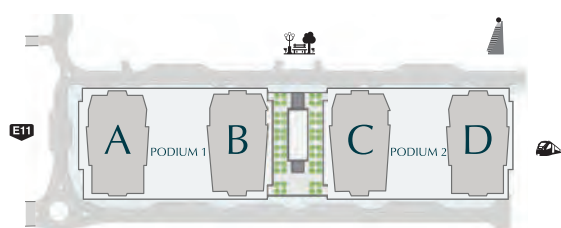
All room dimensions are in metric and measured to structural elements and exclude wall finishes and construction tolerances. Calculation of suite area is measured as the area bounded by the centerline of demising or party walls separating one unit from another unit, the exterior surface of all exterior walls and the exterior surface of the corridor wall on enclosing and abutting the unit. Calculation of Terrace area is measured as the area bounded by the centerlines of demising or party walls separating one unit from another unit, the outermost face of the enclosing guard and the external face of the site abutting the balcony. All materials, dimensions & drawings features and amenities are approximate at the time of printing. Information subject to change without notice. Actual suite areas may vary from the stated area. Drawings are not to scale E&O. The developer reserves the right to make revisions.

# PARK GATE RESIDENCES TOWER A



## 2 BR / TYPE 3C

SUITE	1,463.14 SQ.FT.	135.93 SQ.M.
TERRACE	445.52 SQ.FT.	41.39 SQ.M.
<b>TOTAL</b>	<b>1,908.66 SQ.FT.</b>	<b>177.32 SQ.M.</b>



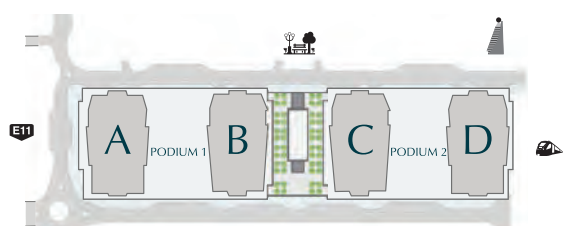
TOWERS A & D ARE IDENTICAL AND MIRRORED, AND TOWERS B & C ARE IDENTICAL AND MIRRORED.

All room dimensions are in metric and measured to structural elements and exclude wall finishes and construction tolerances. Calculation of suite area is measured as the area bounded by the centerline of demising or party walls separating one unit from another unit, the exterior surface of all exterior walls and the exterior surface of the corridor wall on enclosing and abutting the unit. Calculation of Terrace area is measured as the area bounded by the centerlines of demising or party walls separating one unit from another unit, the outermost face of the enclosing guard and the external face of the site abutting the balcony. All materials, dimensions & drawings features and amenities are approximate at the time of printing. Information subject to change without notice. Actual suite areas may vary from the stated area. Drawings are not to scale E&O. The developer reserves the right to make revisions.

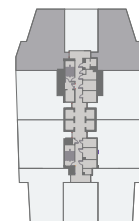


## 2 BR / TYPE 4A

SUITE	1,379.29 SQ.FT.	128.14 SQ.M.
TERRACE	257.47 SQ.FT.	23.92 SQ.M.
<b>TOTAL</b>	<b>1,636.76 SQ.FT.</b>	<b>152.06 SQ.M.</b>



TOWERS A & D ARE IDENTICAL AND MIRRORED, AND TOWERS B & C ARE IDENTICAL AND MIRRORED.



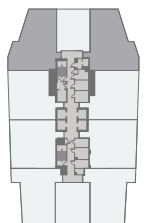
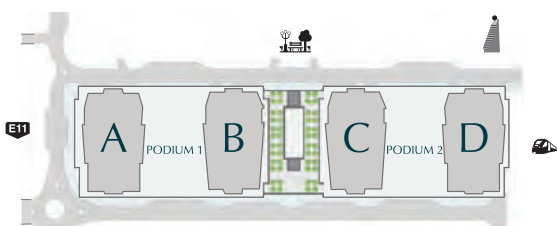
All room dimensions are in metric and measured to structural elements and exclude wall finishes and construction tolerances. Calculation of suite area is measured as the area bounded by the centerline of demising or party walls separating one unit from another unit, the exterior surface of all exterior walls and the exterior surface of the corridor wall on enclosing and abutting the unit. Calculation of Terrace area is measured as the area bounded by the centerlines of demising or party walls separating one unit from another unit, the outermost face of the enclosing guard and the external face of the site abutting the balcony. All materials, dimensions & drawings features and amenities are approximate at the time of printing. Information subject to change without notice. Actual suite areas may vary from the stated area. Drawings are not to scale E&O. The developer reserves the right to make revisions.

# PARK GATE RESIDENCES TOWER A



## 2 BR / TYPE 4B

SUITE	1,379.29 SQ.FT.	128.14 SQ.M.
TERRACE	179.43 SQ.FT.	16.67 SQ.M.
<b>TOTAL</b>	<b>1,558.83 SQ.FT.</b>	<b>144.82 SQ.M.</b>



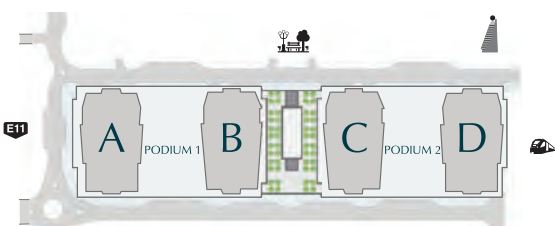
TOWERS A & D ARE IDENTICAL AND MIRRORED, AND TOWERS B & C ARE IDENTICAL AND MIRRORED.

All room dimensions are in metric and measured to structural elements and exclude wall finishes and construction tolerances. Calculation of suite area is measured as the area bounded by the centerline of demising or party walls separating one unit from another unit, the exterior surface of all exterior walls and the exterior surface of the corridor wall on enclosing and abutting the unit. Calculation of Terrace area is measured as the area bounded by the centerlines of demising or party walls separating one unit from another unit, the outermost face of the enclosing guard and the external face of the site abutting the balcony. All materials, dimensions & drawings features and amenities are approximate at the time of printing. Information subject to change without notice. Actual suite areas may vary from the stated area. Drawings are not to scale E&O. The developer reserves the right to make revisions.

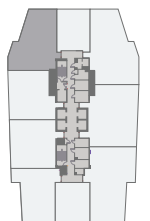


## 2 BR / TYPE 4C

SUITE	1,383.06 SQ.FT.	128.49 SQ.M.
TERRACE	913.75 SQ.FT.	84.89 SQ.M.
<b>TOTAL</b>	<b>2,296.81 SQ.FT.</b>	<b>213.38 SQ.M.</b>



TOWERS A & D ARE IDENTICAL AND MIRRORED, AND TOWERS B & C ARE IDENTICAL AND MIRRORED.

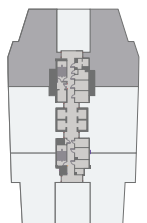
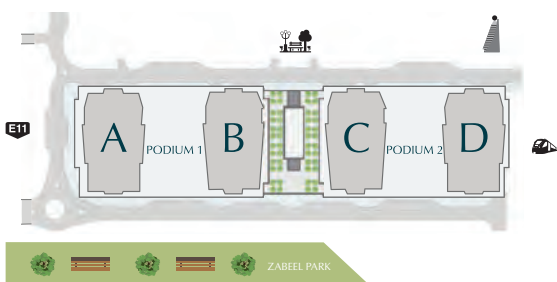


All room dimensions are in metric and measured to structural elements and exclude wall finishes and construction tolerances. Calculation of suite area is measured as the area bounded by the centerline of demising or party walls separating one unit from another unit, the exterior surface of all exterior walls and the exterior surface of the corridor wall on enclosing and abutting the unit. Calculation of Terrace area is measured as the area bounded by the centerlines of demising or party walls separating one unit from another unit, the outermost face of the enclosing guard and the external face of the site abutting the balcony. All materials, dimensions & drawings features and amenities are approximate at the time of printing. Information subject to change without notice. Actual suite areas may vary from the stated area. Drawings are not to scale E&O. The developer reserves the right to make revisions.



## 3 BR / TYPE 3A

SUITE	1,816.84 SQ.FT.	168.79 SQ.M.
TERRACE	342.83 SQ.FT.	31.85 SQ.M.
<b>TOTAL</b>	<b>2,159.67 SQ.FT.</b>	<b>200.64 SQ.M.</b>



TOWERS A & D ARE IDENTICAL AND MIRRORED, AND TOWERS B & C ARE IDENTICAL AND MIRRORED.

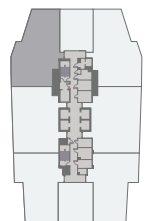
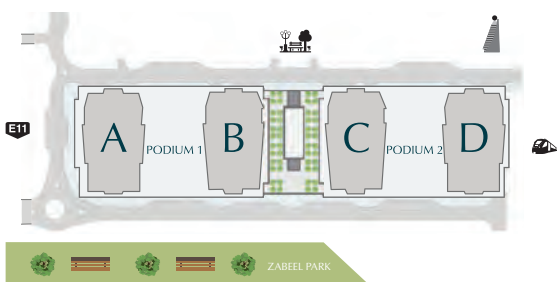
All room dimensions are in metric and measured to structural elements and exclude wall finishes and construction tolerances. Calculation of suite area is measured as the area bounded by the centerline of demising or party walls separating one unit from another unit, the exterior surface of all exterior walls and the exterior surface of the corridor wall on enclosing and abutting the unit. Calculation of Terrace area is measured as the area bounded by the centerlines of demising or party walls separating one unit from another unit, the outermost face of the enclosing guard and the external face of the site abutting the balcony. All materials, dimensions & drawings features and amenities are approximate at the time of printing. Information subject to change without notice. Actual suite areas may vary from the stated area. Drawings are not to scale E&O. The developer reserves the right to make revisions.

# PARK GATE RESIDENCES TOWER A



## 3 BR / TYPE 3B

SUITE	1,817.06 SQ.FT.	168.81 SQ.M.
TERRACE	258.44 SQ.FT.	24.01 SQ.M.
<b>TOTAL</b>	<b>2,075.50 SQ.FT.</b>	<b>192.82 SQ.M.</b>



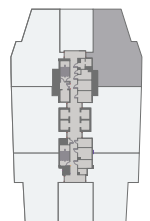
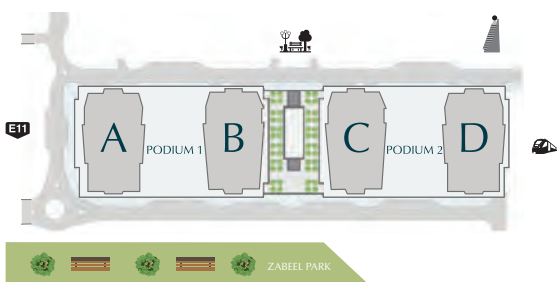
TOWERS A & D ARE IDENTICAL AND MIRRORED, AND TOWERS B & C ARE IDENTICAL AND MIRRORED.

All room dimensions are in metric and measured to structural elements and exclude wall finishes and construction tolerances. Calculation of suite area is measured as the area bounded by the centerline of demising or party walls separating one unit from another unit, the exterior surface of all exterior walls and the exterior surface of the corridor wall on enclosing and abutting the unit. Calculation of Terrace area is measured as the area bounded by the centerlines of demising or party walls separating one unit from another unit, the outermost face of the enclosing guard and the external face of the site abutting the balcony. All materials, dimensions & drawings features and amenities are approximate at the time of printing. Information subject to change without notice. Actual suite areas may vary from the stated area. Drawings are not to scale E&O. The developer reserves the right to make revisions.



## 3 BR / TYPE 3C

SUITE	1,817.06 SQ.FT.	168.81 SQ.M.
TERRACE	180.51 SQ.FT.	16.77 SQ.M.
<b>TOTAL</b>	<b>1,997.57 SQ.FT.</b>	<b>185.58 SQ.M.</b>



TOWERS A & D ARE IDENTICAL AND MIRRORED, AND TOWERS B & C ARE IDENTICAL AND MIRRORED.

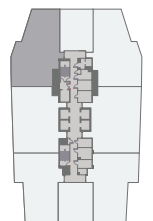
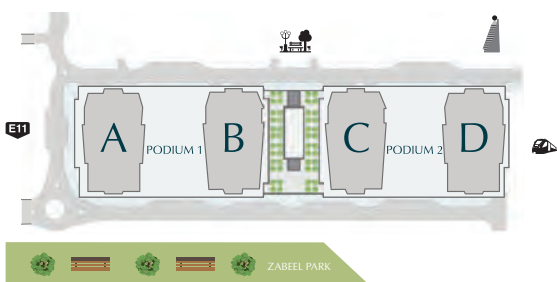
All room dimensions are in metric and measured to structural elements and exclude wall finishes and construction tolerances. Calculation of suite area is measured as the area bounded by the centerline of demising or party walls separating one unit from another unit, the exterior surface of all exterior walls and the exterior surface of the corridor wall on enclosing and abutting the unit. Calculation of Terrace area is measured as the area bounded by the centerlines of demising or party walls separating one unit from another unit, the outermost face of the enclosing guard and the external face of the site abutting the balcony. All materials, dimensions & drawings features and amenities are approximate at the time of printing. Information subject to change without notice. Actual suite areas may vary from the stated area. Drawings are not to scale E&O. The developer reserves the right to make revisions.

# PARK GATE RESIDENCES TOWER A



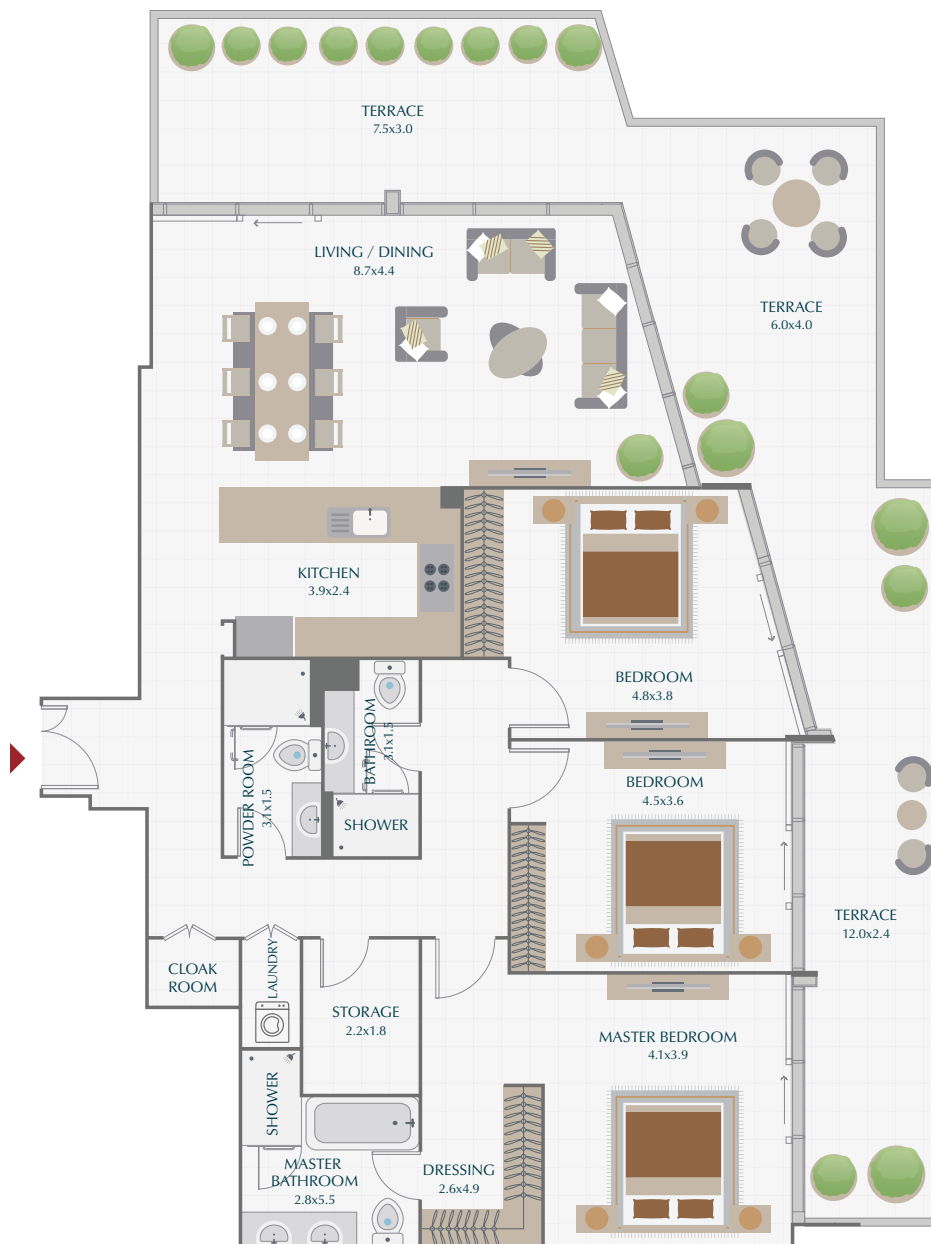
## 3 BR / TYPE 3D

SUITE	1,816.84 SQ.FT.	168.79 SQ.M.
TERRACE	265.01 SQ.FT.	24.62 SQ.M.
<b>TOTAL</b>	<b>2,081.85 SQ.FT.</b>	<b>193.41 SQ.M.</b>



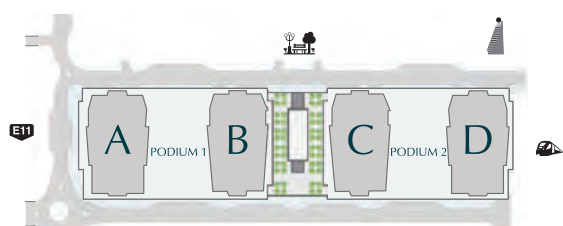
TOWERS A & D ARE IDENTICAL AND MIRRORED, AND TOWERS B & C ARE IDENTICAL AND MIRRORED.

All room dimensions are in metric and measured to structural elements and exclude wall finishes and construction tolerances. Calculation of suite area is measured as the area bounded by the centerline of demising or party walls separating one unit from another unit, the exterior surface of all exterior walls and the exterior surface of the corridor wall on enclosing and abutting the unit. Calculation of Terrace area is measured as the area bounded by the centerlines of demising or party walls separating one unit from another unit, the outermost face of the enclosing guard and the external face of the site abutting the balcony. All materials, dimensions & drawings features and amenities are approximate at the time of printing. Information subject to change without notice. Actual suite areas may vary from the stated area. Drawings are not to scale E&O. The developer reserves the right to make revisions.

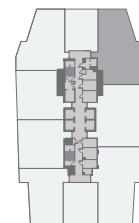


## 3 BR / TYPE 3E

SUITE	1,816.84 SQ.FT.	168.79 SQ.M.
TERRACE	782.97 SQ.FT.	72.74 SQ.M.
<b>TOTAL</b>	<b>2,599.81 SQ.FT.</b>	<b>241.53 SQ.M.</b>

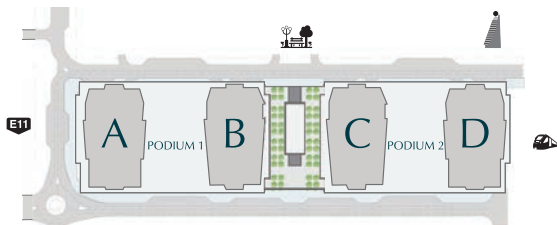
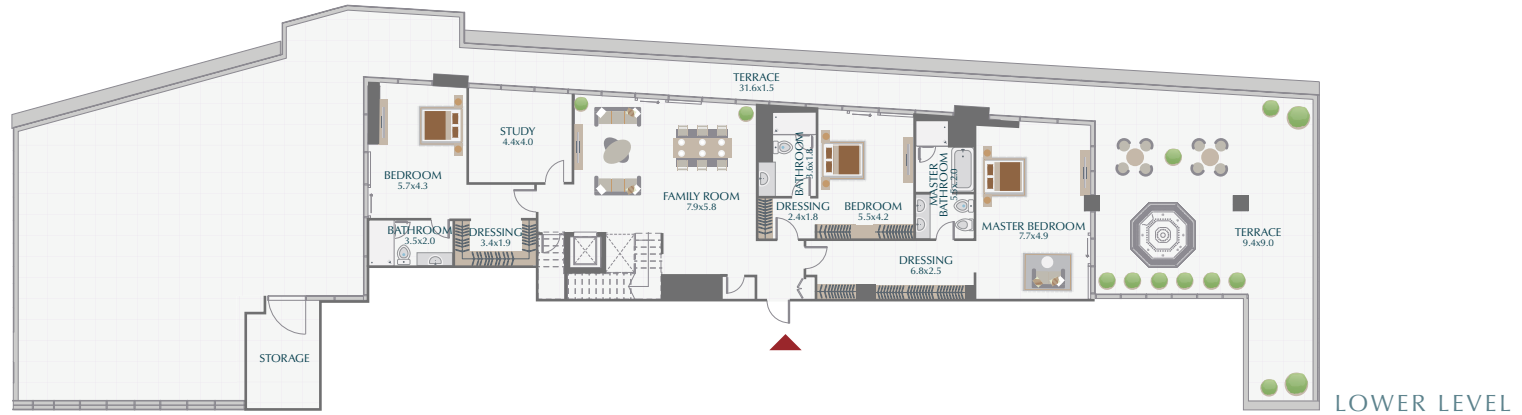


TOWERS A & D ARE IDENTICAL AND MIRRORED, AND TOWERS B & C ARE IDENTICAL AND MIRRORED.



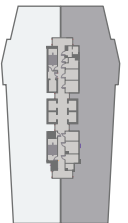
All room dimensions are in metric and measured to structural elements and exclude wall finishes and construction tolerances. Calculation of suite area is measured as the area bounded by the centerline of demising or party walls separating one unit from another unit, the exterior surface of all exterior walls and the exterior surface of the corridor wall on enclosing and abutting the unit. Calculation of Terrace area is measured as the area bounded by the centerlines of demising or party walls separating one unit from another unit, the outermost face of the enclosing guard and the external face of the site abutting the balcony. All materials, dimensions & drawings features and amenities are approximate at the time of printing. Information subject to change without notice. Actual suite areas may vary from the stated area. Drawings are not to scale E&O. The developer reserves the right to make revisions.

# PARK GATE RESIDENCES TOWER A



## 4 BR PENTHOUSE

SUITE	5,875.48 SQ.FT.	545.85 SQ.M.
TERRACE	4,996.39 SQ.FT.	464.18 SQ.M.
<b>TOTAL</b>	<b>10,871.87 SQ.FT.</b>	<b>1,010.03 SQ.M.</b>



TOWERS A & D ARE IDENTICAL AND MIRRORED, AND TOWERS B & C ARE IDENTICAL AND MIRRORED.

All room dimensions are in metric and measured to structural elements and exclude wall finishes and construction tolerances. Calculation of suite area is measured as the area bounded by the centerline of demising or party walls separating one unit from another unit, the exterior surface of all exterior walls and the exterior surface of the corridor wall on enclosing and abutting the unit. Calculation of Terrace area is measured as the area bounded by the centerlines of demising or party walls separating one unit from another unit, the outermost face of the enclosing guard and the external face of the site abutting the balcony. All materials, dimensions & drawings features and amenities are approximate at the time of printing. Information subject to change without notice. Actual suite areas may vary from the stated area. Drawings are not to scale E&EO. The developer reserves the right to make revisions.

# PARK GATE RESIDENCES TOWER B - LEVEL 5



**SUITE 08**

	<b>2 BR / TYPE 4F</b>	
SUITE	1,377.46 SQ.FT.	127.97 SQ.M.
TERRACE	687.60 SQ.FT.	63.88 SQ.M.
<b>TOTAL</b>	<b>2,065.06 SQ.FT.</b>	<b>191.85 SQ.M.</b>

**SUITE 07**

	<b>1 BR / TYPE 4C</b>	
SUITE	844.11 SQ.FT.	78.42 SQ.M.
TERRACE	154.46 SQ.FT.	14.35 SQ.M.
<b>TOTAL</b>	<b>998.57 SQ.FT.</b>	<b>92.77 SQ.M.</b>

**SUITE 06**

	<b>2 BR / TYPE 4D</b>	
SUITE	1,380.69 SQ.FT.	128.27 SQ.M.
TERRACE	668.01 SQ.FT.	62.06 SQ.M.
<b>TOTAL</b>	<b>2,048.70 SQ.FT.</b>	<b>190.33 SQ.M.</b>

**SUITE 05**

	<b>2 BR / TYPE 3C</b>	
SUITE	1,461.09 SQ.FT.	135.74 SQ.M.
TERRACE	461.02 SQ.FT.	42.83 SQ.M.
<b>TOTAL</b>	<b>1,922.11 SQ.FT.</b>	<b>178.57 SQ.M.</b>

**SUITE 04**

	<b>2 BR / TYPE 2B</b>	
SUITE	1,413.62 SQ.FT.	131.33 SQ.M.
TERRACE	512.58 SQ.FT.	47.62 SQ.M.
<b>TOTAL</b>	<b>1,926.20 SQ.FT.</b>	<b>178.95 SQ.M.</b>

**SUITE 03**

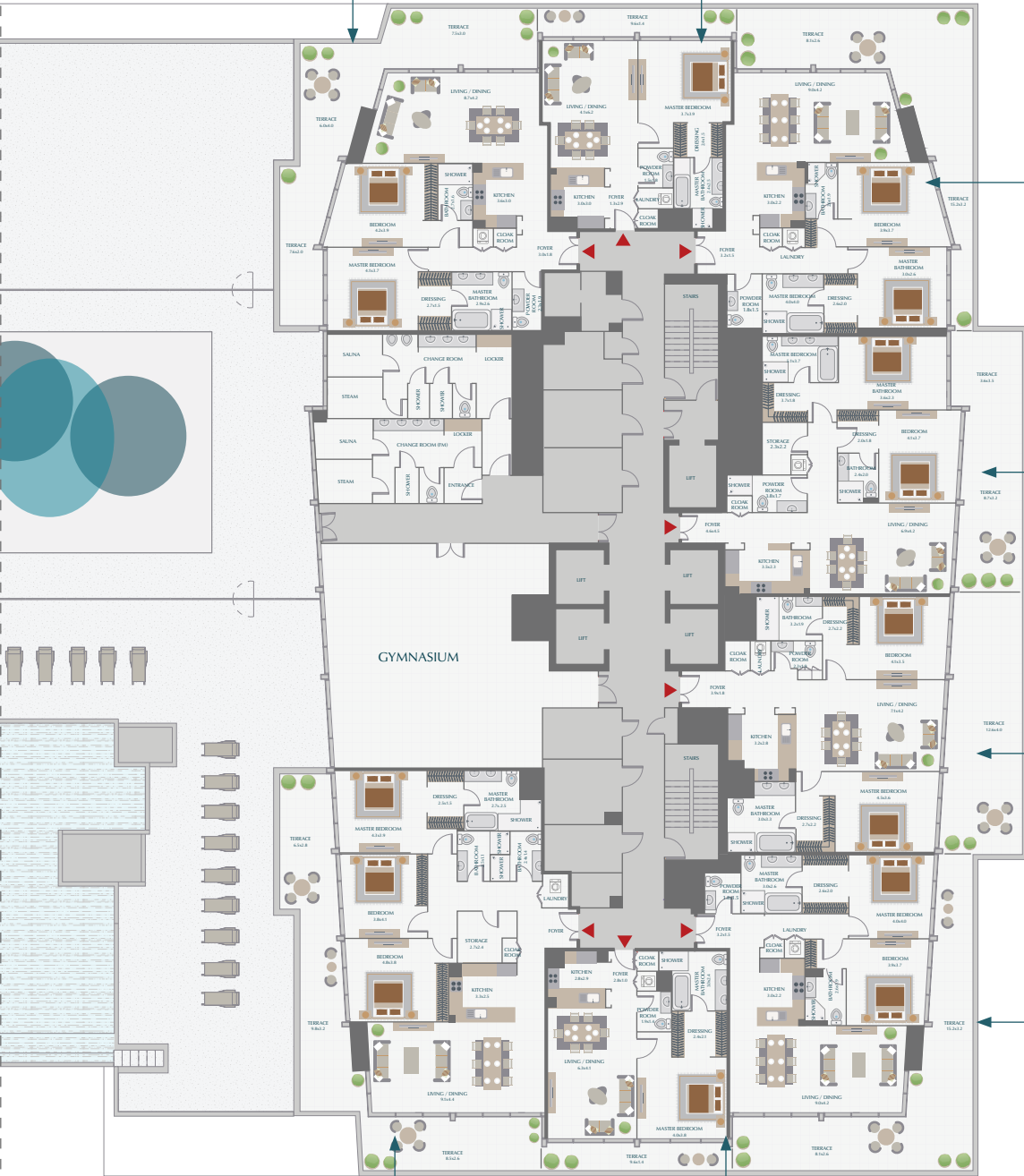
	<b>2 BR / TYPE 1C</b>	
SUITE	1,365.83 SQ.FT.	126.89 SQ.M.
TERRACE	679.53 SQ.FT.	63.13 SQ.M.
<b>TOTAL</b>	<b>2,045.36 SQ.FT.</b>	<b>190.02 SQ.M.</b>

**SUITE 01**

	<b>3 BR / TYPE 1C</b>	
SUITE	1,787.46 SQ.FT.	166.06 SQ.M.
TERRACE	750.78 SQ.FT.	69.75 SQ.M.
<b>TOTAL</b>	<b>2,538.24 SQ.FT.</b>	<b>235.81 SQ.M.</b>

**SUITE 02**

	<b>1 BR / TYPE 1B</b>	
SUITE	851.75 SQ.FT.	79.13 SQ.M.
TERRACE	153.28 SQ.FT.	14.24 SQ.M.
<b>TOTAL</b>	<b>1,005.03 SQ.FT.</b>	<b>93.37 SQ.M.</b>



All room dimensions are in metric and measured to structural elements and exclude wall finishes and construction tolerances. Calculation of suite area is measured as the area bounded by the centerline of demising or party walls separating one unit from another unit, the exterior surface of all exterior walls and the exterior surface of the corridor wall on enclosing and abutting the unit. Calculation of terrace area is measured as the area bounded by the centerlines of demising or party walls separating one unit from another unit, the outermost face of the enclosing guard and the external face of the site abutting the balcony. All materials, dimensions & drawings features and amenities are approximate at the time of printing. Information subject to change without notice. Actual suite areas may vary from the stated area. Drawings are not to scale E&O. The developer reserves the right to make revisions.

# PARK GATE RESIDENCES TOWER B - LEVEL 6, 16



## SUITE 7

### 1 BR / TYPE 4A

SUITE	844.11 SQ.FT.	78.42 SQ.M.
TERRACE	145.42 SQ.FT.	13.51 SQ.M.
<b>TOTAL</b>	<b>989.53 SQ.FT.</b>	<b>91.93 SQ.M.</b>

## SUITE 08

### 2 BR / TYPE 4A

SUITE	1,377.67 SQ.FT.	127.99 SQ.M.
TERRACE	257.69 SQ.FT.	23.94 SQ.M.
<b>TOTAL</b>	<b>1,635.36 SQ.FT.</b>	<b>151.93 SQ.M.</b>

## SUITE 6

### 2 BR / TYPE 4B

SUITE	1,377.14 SQ.FT.	127.94 SQ.M.
TERRACE	179.22 SQ.FT.	16.65 SQ.M.
<b>TOTAL</b>	<b>1,556.35 SQ.FT.</b>	<b>144.59 SQ.M.</b>

## SUITE 09

### 2 BR / TYPE 3A

SUITE	1,460.77 SQ.FT.	135.71 SQ.M.
TERRACE	157.80 SQ.FT.	14.66 SQ.M.
<b>TOTAL</b>	<b>1,618.57 SQ.FT.</b>	<b>150.37 SQ.M.</b>

## SUITE 05

### 2 BR / TYPE 3A

SUITE	1,461.31 SQ.FT.	135.76 SQ.M.
TERRACE	158.44 SQ.FT.	14.72 SQ.M.
<b>TOTAL</b>	<b>1,619.75 SQ.FT.</b>	<b>150.48 SQ.M.</b>

## SUITE 10

### 2 BR / TYPE 2A

SUITE	1,413.62 SQ.FT.	131.33 SQ.M.
TERRACE	137.56 SQ.FT.	12.78 SQ.M.
<b>TOTAL</b>	<b>1,551.19 SQ.FT.</b>	<b>144.11 SQ.M.</b>

## SUITE 04

### 2 BR / TYPE 2A

SUITE	1,413.62 SQ.FT.	131.33 SQ.M.
TERRACE	137.56 SQ.FT.	12.78 SQ.M.
<b>TOTAL</b>	<b>1,551.19 SQ.FT.</b>	<b>144.11 SQ.M.</b>

## SUITE 01

### 2 BR / TYPE 1A

SUITE	1,365.19 SQ.FT.	126.83 SQ.M.
TERRACE	206.99 SQ.FT.	19.23 SQ.M.
<b>TOTAL</b>	<b>1,572.18 SQ.FT.</b>	<b>146.06 SQ.M.</b>

## SUITE 03

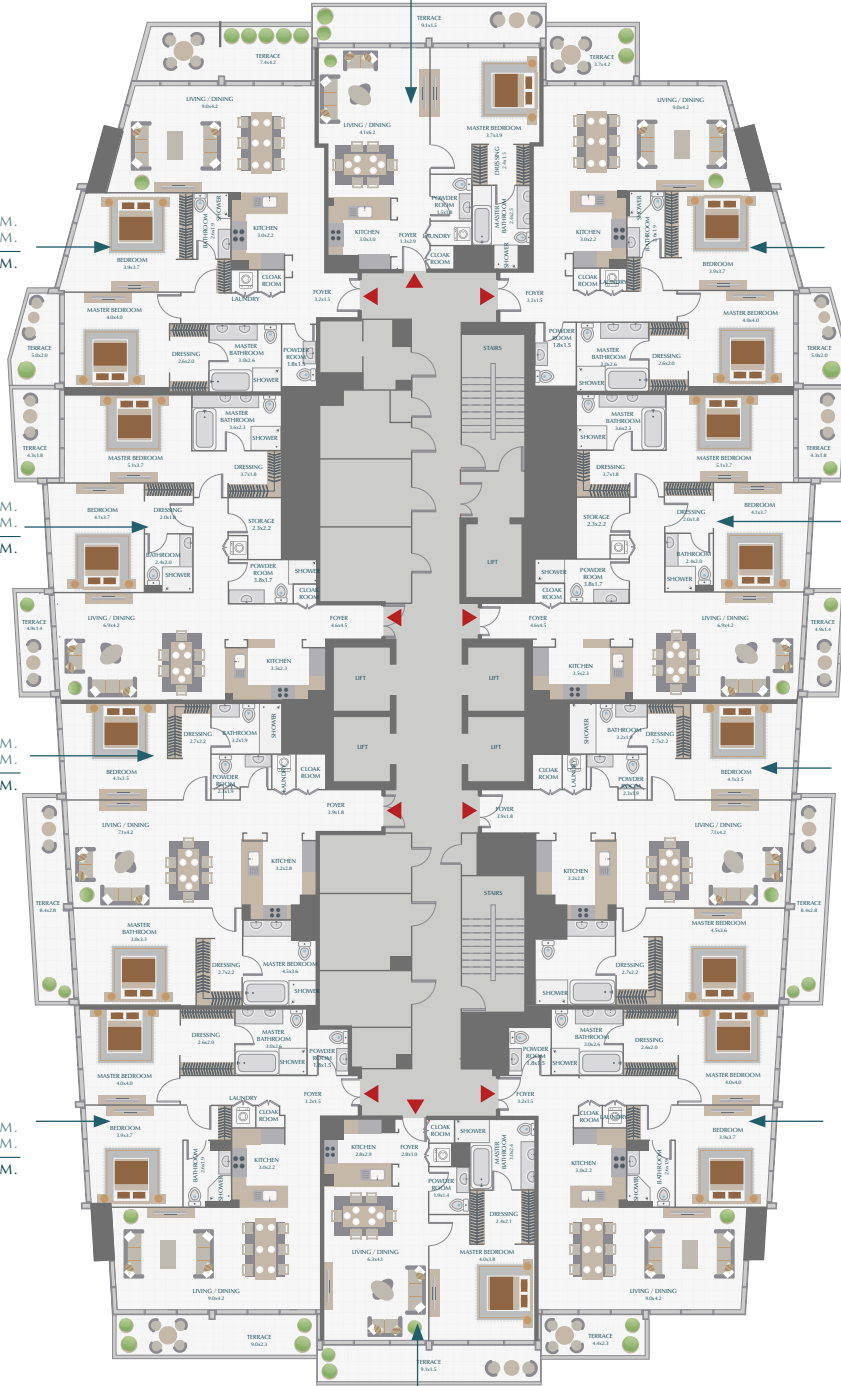
### 2 BR / TYPE 1B

SUITE	1,365.73 SQ.FT.	126.88 SQ.M.
TERRACE	112.91 SQ.FT.	10.49 SQ.M.
<b>TOTAL</b>	<b>1,478.64 SQ.FT.</b>	<b>137.37 SQ.M.</b>

## SUITE 02

### 1 BR / TYPE 1A

SUITE	851.75 SQ.FT.	79.13 SQ.M.
TERRACE	146.82 SQ.FT.	13.64 SQ.M.
<b>TOTAL</b>	<b>998.57 SQ.FT.</b>	<b>92.77 SQ.M.</b>



All room dimensions are in metric and measured to structural elements and exclude wall finishes and construction tolerances. Calculation of suite area is measured as the area bounded by the centerline of demising or party walls separating one unit from another unit, the exterior surface of all exterior walls and the exterior surface of the corridor wall on enclosing and abutting the unit. Calculation of terrace area is measured as the area bounded by the centerlines of demising or party walls separating one unit from another unit, the outermost face of the enclosing guard and the external face of the site abutting the balcony. All materials, dimensions & drawings features and amenities are approximate at the time of printing. Information subject to change without notice. Actual suite areas may vary from the stated area. Drawings are not to scale E&EO. The developer reserves the right to make revisions.

# PARK GATE RESIDENCES

## TOWER B - LEVEL 7,9,10,12,14,15, (17 - 20)



SUITE 7

1 BR / TYPE 4A

SUITE	844.11 SQ.FT.	78.42 SQ.M.
TERRACE	145.42 SQ.FT.	13.51 SQ.M.
<b>TOTAL</b>	<b>989.53 SQ.FT.</b>	<b>91.93 SQ.M.</b>

SUITE 08

2 BR / TYPE 4A

SUITE	1,377.67 SQ.FT.	127.99 SQ.M.
TERRACE	257.69 SQ.FT.	23.94 SQ.M.
<b>TOTAL</b>	<b>1,635.36 SQ.FT.</b>	<b>151.93 SQ.M.</b>

SUITE 6

2 BR / TYPE 4A

SUITE	1,377.14 SQ.FT.	127.94 SQ.M.
TERRACE	257.47 SQ.FT.	23.92 SQ.M.
<b>TOTAL</b>	<b>1,634.61 SQ.FT.</b>	<b>151.86 SQ.M.</b>

SUITE 09

2 BR / TYPE 3A

SUITE	1,460.77 SQ.FT.	135.71 SQ.M.
TERRACE	157.80 SQ.FT.	14.66 SQ.M.
<b>TOTAL</b>	<b>1,618.57 SQ.FT.</b>	<b>150.37 SQ.M.</b>

SUITE 05

2 BR / TYPE 3A

SUITE	1,461.31 SQ.FT.	135.76 SQ.M.
TERRACE	157.91 SQ.FT.	14.67 SQ.M.
<b>TOTAL</b>	<b>1,619.22 SQ.FT.</b>	<b>150.43 SQ.M.</b>

SUITE 10

2 BR / TYPE 2A

SUITE	1,414.27 SQ.FT.	131.39 SQ.M.
TERRACE	137.56 SQ.FT.	12.78 SQ.M.
<b>TOTAL</b>	<b>1,551.83 SQ.FT.</b>	<b>144.17 SQ.M.</b>

SUITE 04

2 BR / TYPE 2A

SUITE	1,414 SQ.FT.	131.33 SQ.M.
TERRACE	138 SQ.FT.	12.78 SQ.M.
<b>TOTAL</b>	<b>1,552 SQ.FT.</b>	<b>144.11 SQ.M.</b>

SUITE 01

2 BR / TYPE 1A

SUITE	1,365.19 SQ.FT.	126.83 SQ.M.
TERRACE	206.99 SQ.FT.	19.23 SQ.M.
<b>TOTAL</b>	<b>1,572.18 SQ.FT.</b>	<b>146.06 SQ.M.</b>

SUITE 03

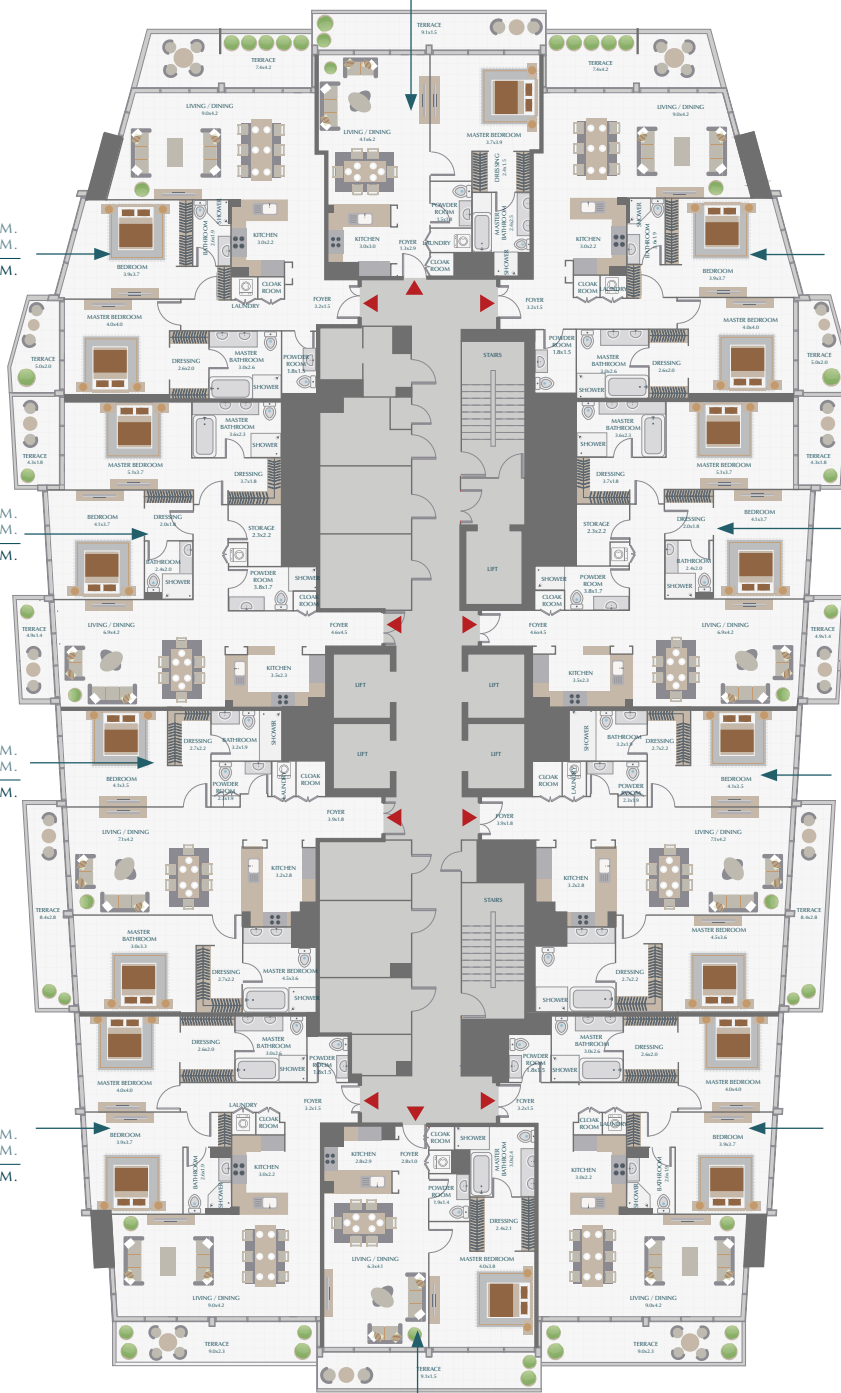
2 BR / TYPE 1A

SUITE	1,365.73 SQ.FT.	126.88 SQ.M.
TERRACE	206.88 SQ.FT.	19.22 SQ.M.
<b>TOTAL</b>	<b>1,572.61 SQ.FT.</b>	<b>146.10 SQ.M.</b>

SUITE 02

1 BR / TYPE 1A

SUITE	851.75 SQ.FT.	79.13 SQ.M.
TERRACE	146.82 SQ.FT.	13.64 SQ.M.
<b>TOTAL</b>	<b>998.57 SQ.FT.</b>	<b>92.77 SQ.M.</b>



All room dimensions are in metric and measured to structural elements and exclude wall finishes and construction tolerances. Calculation of suite area is measured as the area bounded by the centerline of demising or party walls separating one unit from another unit, the exterior surface of all exterior walls and the exterior surface of the corridor wall on enclosing and abutting the unit. Calculation of terrace area is measured as the area bounded by the centerlines of demising or party walls separating one unit from another unit, the outermost face of the enclosing guard and the external face of the site abutting the balcony. All materials, dimensions & drawings features and amenities are approximate at the time of printing. Information subject to change without notice. Actual suite areas may vary from the stated area. Drawings are not to scale E&EO. The developer reserves the right to make revisions.

# PARK GATE RESIDENCES

## TOWER B - LEVEL 8, 13



### SUITE 7

#### 1 BR / TYPE 4A

SUITE	844.11 SQ.FT.	78.42 SQ.M.
TERRACE	145.42 SQ.FT.	13.51 SQ.M.
<b>TOTAL</b>	<b>989.53 SQ.FT.</b>	<b>91.93 SQ.M.</b>

### SUITE 08

#### 2 BR / TYPE 4B

SUITE	1,377.67 SQ.FT.	127.99 SQ.M.
TERRACE	179.76 SQ.FT.	16.70 SQ.M.
<b>TOTAL</b>	<b>1,557.43 SQ.FT.</b>	<b>144.69 SQ.M.</b>

### SUITE 6

#### 2 BR / TYPE 4A

SUITE	1,377.14 SQ.FT.	127.94 SQ.M.
TERRACE	257.47 SQ.FT.	23.92 SQ.M.
<b>TOTAL</b>	<b>1,634.61 SQ.FT.</b>	<b>151.86 SQ.M.</b>

### SUITE 09

#### 2 BR / TYPE 3A

SUITE	1,460.77 SQ.FT.	135.71 SQ.M.
TERRACE	157.80 SQ.FT.	14.66 SQ.M.
<b>TOTAL</b>	<b>1,618.57 SQ.FT.</b>	<b>150.37 SQ.M.</b>

### SUITE 05

#### 2 BR / TYPE 3A

SUITE	1,461.31 SQ.FT.	135.76 SQ.M.
TERRACE	158.23 SQ.FT.	14.70 SQ.M.
<b>TOTAL</b>	<b>1,619.54 SQ.FT.</b>	<b>150.46 SQ.M.</b>

### SUITE 10

#### 2 BR / TYPE 2A

SUITE	1,414.27 SQ.FT.	131.39 SQ.M.
TERRACE	137.56 SQ.FT.	12.78 SQ.M.
<b>TOTAL</b>	<b>1,551.83 SQ.FT.</b>	<b>144.17 SQ.M.</b>

### SUITE 04

#### 2 BR / TYPE 2A

SUITE	1,413.62 SQ.FT.	131.33 SQ.M.
TERRACE	137.46 SQ.FT.	12.77 SQ.M.
<b>TOTAL</b>	<b>1,551.08 SQ.FT.</b>	<b>144.10 SQ.M.</b>

### SUITE 01

#### 2 BR / TYPE 1B

SUITE	1,365.19 SQ.FT.	126.83 SQ.M.
TERRACE	113.02 SQ.FT.	10.50 SQ.M.
<b>TOTAL</b>	<b>1,478.21 SQ.FT.</b>	<b>137.33 SQ.M.</b>

### SUITE 03

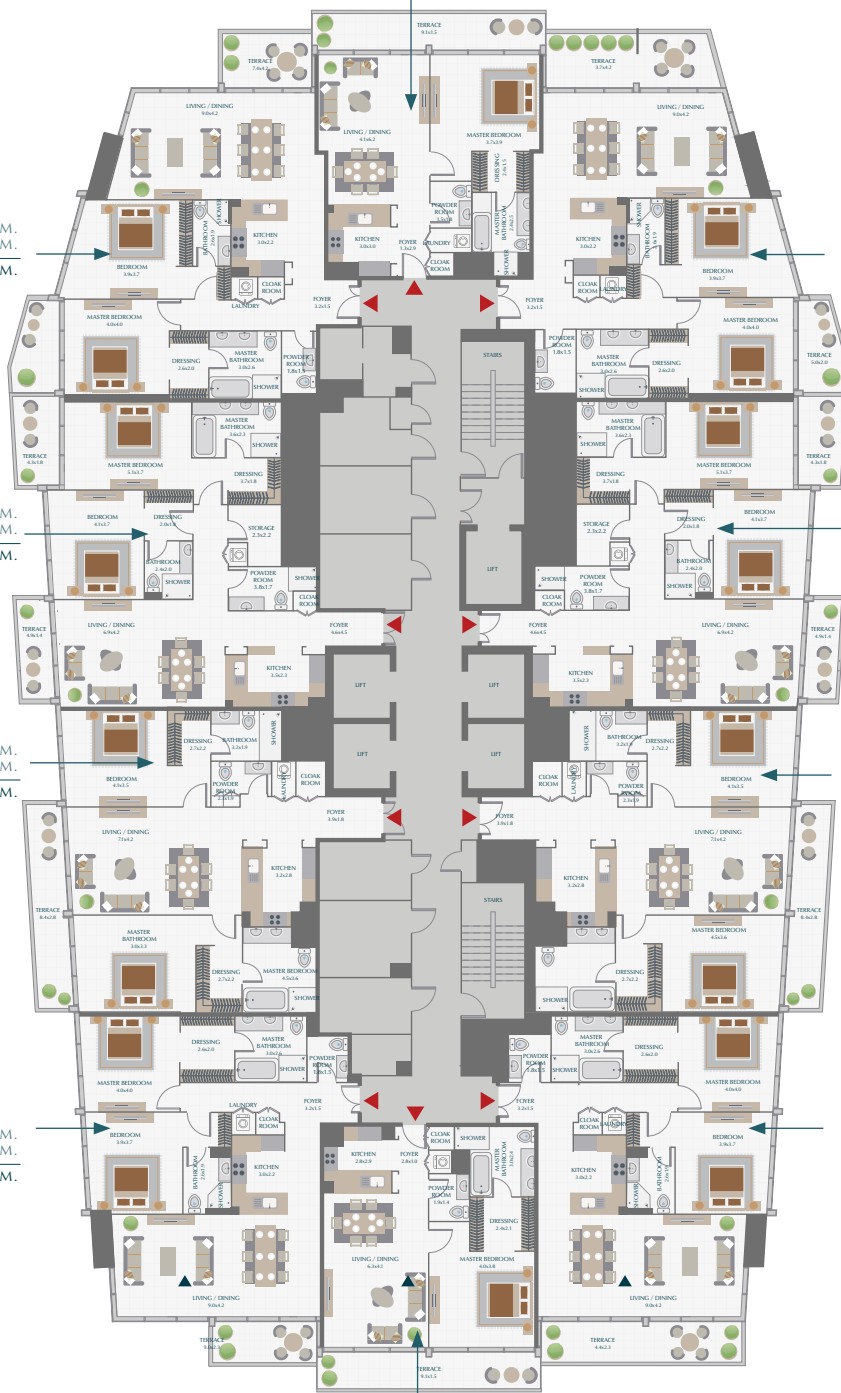
#### 2 BR / TYPE 1A

SUITE	1,365.73 SQ.FT.	126.88 SQ.M.
TERRACE	206.88 SQ.FT.	19.22 SQ.M.
<b>TOTAL</b>	<b>1,572.61 SQ.FT.</b>	<b>146.10 SQ.M.</b>

### SUITE 02

#### 1 BR / TYPE 1A

SUITE	851.75 SQ.FT.	79.13 SQ.M.
TERRACE	146.82 SQ.FT.	13.64 SQ.M.
<b>TOTAL</b>	<b>998.57 SQ.FT.</b>	<b>92.77 SQ.M.</b>



All room dimensions are in metric and measured to structural elements and exclude wall finishes and construction tolerances. Calculation of suite area is measured as the area bounded by the centerline of demising or party walls separating one unit from another unit, the exterior surface of all exterior walls and the exterior surface of the corridor wall on enclosing and abutting the unit. Calculation of terrace area is measured as the area bounded by the centerlines of demising or party walls separating one unit from another unit, the outermost face of the enclosing guard and the external face of the site abutting the balcony. All materials, dimensions & drawings features and amenities are approximate at the time of printing. Information subject to change without notice. Actual suite areas may vary from the stated area. Drawings are not to scale E&EO. The developer reserves the right to make revisions.

# PARK GATE RESIDENCES TOWER B - LEVEL 11



## SUITE 7

### 1 BR / TYPE 4A

SUITE	844.11 SQ.FT.	78.42 SQ.M.
TERRACE	145.42 SQ.FT.	13.51 SQ.M.
<b>TOTAL</b>	<b>989.53 SQ.FT.</b>	<b>91.93 SQ.M.</b>

## SUITE 08

### 2 BR / TYPE 4A

SUITE	1,377.67 SQ.FT.	127.99 SQ.M.
TERRACE	257.47 SQ.FT.	23.92 SQ.M.
<b>TOTAL</b>	<b>1,635.15 SQ.FT.</b>	<b>151.91 SQ.M.</b>

## SUITE 6

### 2 BR / TYPE 4B

SUITE	1,377.14 SQ.FT.	127.94 SQ.M.
TERRACE	179.22 SQ.FT.	16.65 SQ.M.
<b>TOTAL</b>	<b>1,556.35 SQ.FT.</b>	<b>144.59 SQ.M.</b>

## SUITE 09

### 2 BR / TYPE 3B

SUITE	1,460.45 SQ.FT.	135.68 SQ.M.
TERRACE	75.02 SQ.FT.	6.97 SQ.M.
<b>TOTAL</b>	<b>1,535.47 SQ.FT.</b>	<b>142.65 SQ.M.</b>

## SUITE 05

### 2 BR / TYPE 3A

SUITE	1,461.31 SQ.FT.	135.76 SQ.M.
TERRACE	158.44 SQ.FT.	14.72 SQ.M.
<b>TOTAL</b>	<b>1,619.75 SQ.FT.</b>	<b>150.48 SQ.M.</b>

## SUITE 10

### 2 BR / TYPE 2A

SUITE	1,414.27 SQ.FT.	131.39 SQ.M.
TERRACE	137.46 SQ.FT.	12.77 SQ.M.
<b>TOTAL</b>	<b>1,551.73 SQ.FT.</b>	<b>144.16 SQ.M.</b>

## SUITE 04

### 2 BR / TYPE 2A

SUITE	1,413.62 SQ.FT.	131.33 SQ.M.
TERRACE	137.56 SQ.FT.	12.78 SQ.M.
<b>TOTAL</b>	<b>1,551.19 SQ.FT.</b>	<b>144.11 SQ.M.</b>

## SUITE 01

### 2 BR / TYPE 1A

SUITE	1,365.19 SQ.FT.	126.83 SQ.M.
TERRACE	206.99 SQ.FT.	19.23 SQ.M.
<b>TOTAL</b>	<b>1,572.18 SQ.FT.</b>	<b>146.06 SQ.M.</b>

## SUITE 03

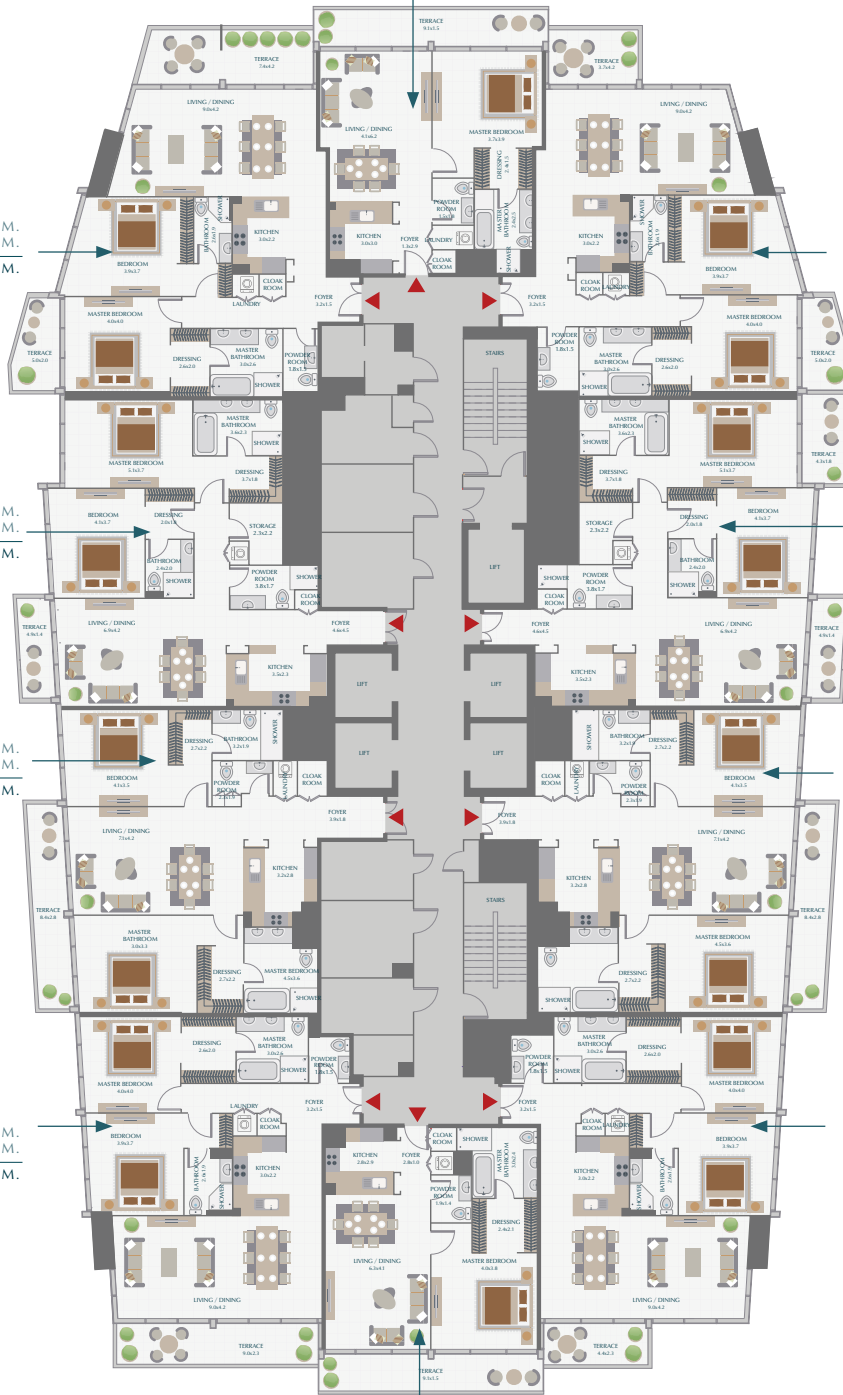
### 2 BR / TYPE 1B

SUITE	1,365.73 SQ.FT.	126.88 SQ.M.
TERRACE	112.91 SQ.FT.	10.49 SQ.M.
<b>TOTAL</b>	<b>1,478.64 SQ.FT.</b>	<b>137.37 SQ.M.</b>

## SUITE 02

### 1 BR / TYPE 1A

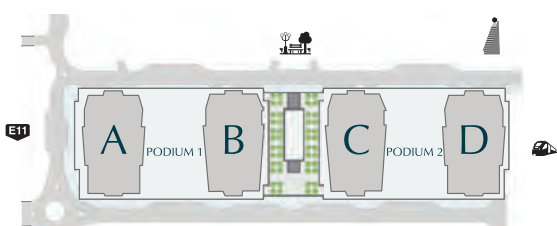
SUITE	851.75 SQ.FT.	79.13 SQ.M.
TERRACE	146.82 SQ.FT.	13.64 SQ.M.
<b>TOTAL</b>	<b>998.57 SQ.FT.</b>	<b>92.77 SQ.M.</b>



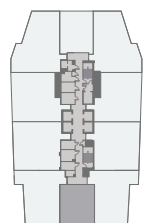


## 1 BR / TYPE 1A

SUITE	851.75 SQ.FT.	79.13 SQ.M.
TERRACE	146.82 SQ.FT.	13.64 SQ.M.
<b>TOTAL</b>	<b>998.57 SQ.FT.</b>	<b>92.77 SQ.M.</b>



TOWERS A & D ARE IDENTICAL AND MIRRORED, AND TOWERS B & C ARE IDENTICAL AND MIRRORED.

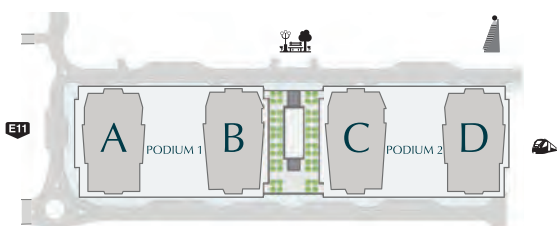


# PARK GATE RESIDENCES TOWER B

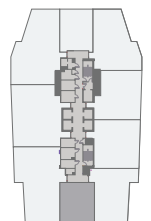


## 1 BR / TYPE 1B

SUITE	851.75 SQ.FT.	79.13 SQ.M.
TERRACE	151.45 SQ.FT.	14.07 SQ.M.
<b>TOTAL</b>	<b>1,003.20 SQ.FT.</b>	<b>93.20 SQ.M.</b>



TOWERS A & D ARE IDENTICAL AND MIRRORED, AND TOWERS B & C ARE IDENTICAL AND MIRRORED.

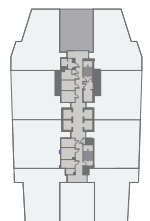
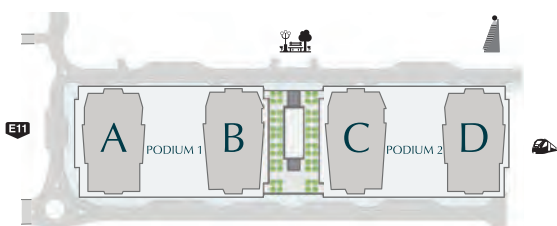


All room dimensions are in metric and measured to structural elements and exclude wall finishes and construction tolerances. Calculation of suite area is measured as the area bounded by the centerline of demising or party walls separating one unit from another unit, the exterior surface of all exterior walls and the exterior surface of the corridor wall on enclosing and abutting the unit. Calculation of Terrace area is measured as the area bounded by the centerlines of demising or party walls separating one unit from another unit, the outermost face of the enclosing guard and the external face of the site abutting the balcony. All materials, dimensions & drawings features and amenities are approximate at the time of printing. Information subject to change without notice. Actual suite areas may vary from the stated area. Drawings are not to scale E&O. The developer reserves the right to make revisions.



## 1 BR / TYPE 4A

SUITE	844.11 SQ.FT.	78.42 SQ.M.
TERRACE	145.42 SQ.FT.	13.51 SQ.M.
<b>TOTAL</b>	<b>989.53 SQ.FT.</b>	<b>91.93 SQ.M.</b>



TOWERS A & D ARE IDENTICAL AND MIRRORED, AND TOWERS B & C ARE IDENTICAL AND MIRRORED.

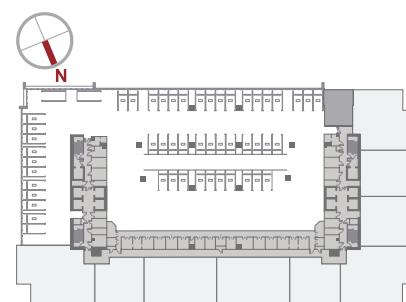
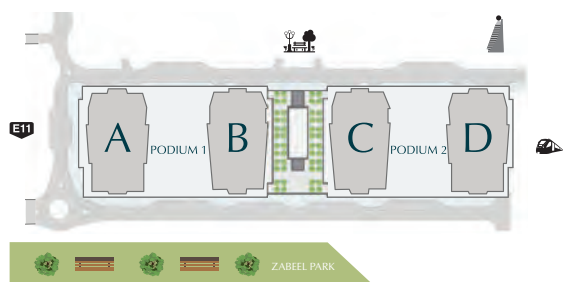
All room dimensions are in metric and measured to structural elements and exclude wall finishes and construction tolerances. Calculation of suite area is measured as the area bounded by the centerline of demising or party walls separating one unit from another unit, the exterior surface of all exterior walls and the exterior surface of the corridor wall on enclosing and abutting the unit. Calculation of Terrace area is measured as the area bounded by the centerlines of demising or party walls separating one unit from another unit, the outermost face of the enclosing guard and the external face of the site abutting the balcony. All materials, dimensions & drawings features and amenities are approximate at the time of printing. Information subject to change without notice. Actual suite areas may vary from the stated area. Drawings are not to scale E&O. The developer reserves the right to make revisions.

# PARK GATE RESIDENCES TOWER B



## 1 BR / TYPE 4B

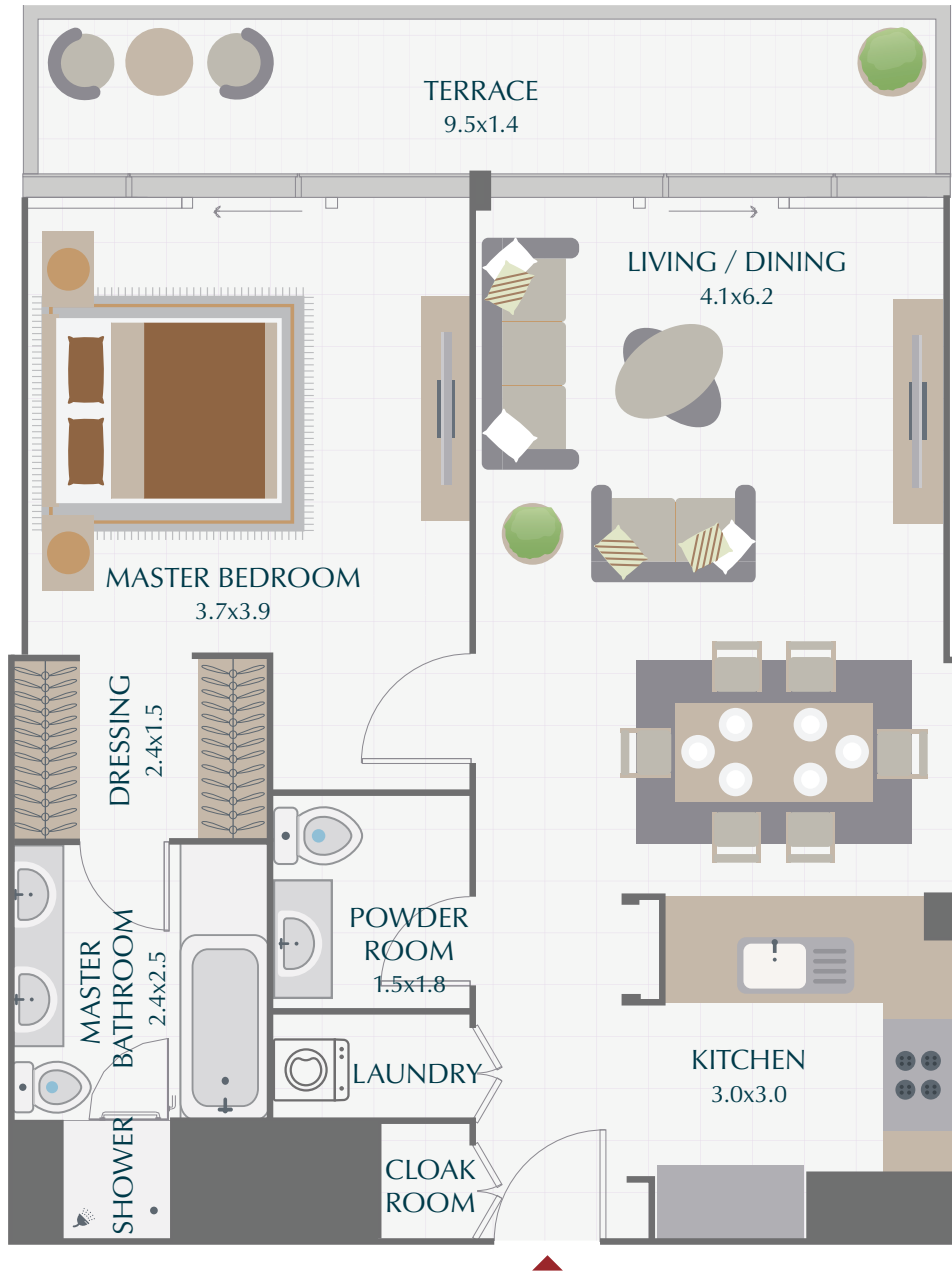
SUITE	842.81 SQ.FT.	78.30 SQ.M.
TERRACE	73.19 SQ.FT.	6.80 SQ.M.
<b>TOTAL</b>	<b>916.01 SQ.FT.</b>	<b>85.10 SQ.M.</b>



TOWERS A & D ARE IDENTICAL AND MIRRORED, AND TOWERS B & C ARE IDENTICAL AND MIRRORED.

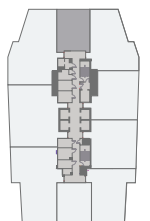
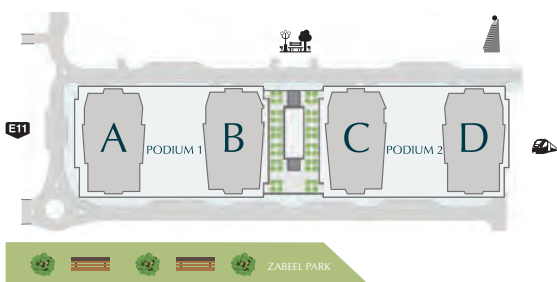
All room dimensions are in metric and measured to structural elements and exclude wall finishes and construction tolerances. Calculation of suite area is measured as the area bounded by the centerline of demising or party walls separating one unit from another unit, the exterior surface of all exterior walls and the exterior surface of the corridor wall on enclosing and abutting the unit. Calculation of Terrace area is measured as the area bounded by the centerlines of demising or party walls separating one unit from another unit, the outermost face of the enclosing guard and the external face of the site abutting the balcony. All materials, dimensions & drawings features and amenities are approximate at the time of printing. Information subject to change without notice. Actual suite areas may vary from the stated area. Drawings are not to scale E&O. The developer reserves the right to make revisions.

# PARK GATE RESIDENCES TOWER B



## 1 BR / TYPE 4C

SUITE	844.11 SQ.FT.	78.42 SQ.M.
TERRACE	154.46 SQ.FT.	14.35 SQ.M.
<b>TOTAL</b>	<b>998.57 SQ.FT.</b>	<b>92.77 SQ.M.</b>



TOWERS A & D ARE IDENTICAL AND MIRRORED, AND TOWERS B & C ARE IDENTICAL AND MIRRORED.

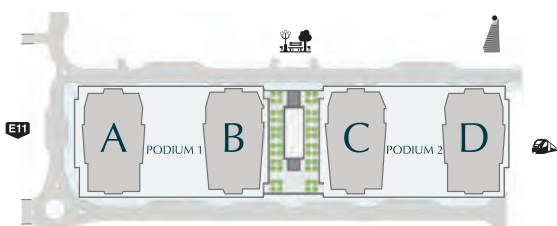
All room dimensions are in metric and measured to structural elements and exclude wall finishes and construction tolerances. Calculation of suite area is measured as the area bounded by the centerline of demising or party walls separating one unit from another unit, the exterior surface of all exterior walls and the exterior surface of the corridor wall on enclosing and abutting the unit. Calculation of Terrace area is measured as the area bounded by the centerlines of demising or party walls separating one unit from another unit, the outermost face of the enclosing guard and the external face of the site abutting the balcony. All materials, dimensions & drawings features and amenities are approximate at the time of printing. Information subject to change without notice. Actual suite areas may vary from the stated area. Drawings are not to scale E&O. The developer reserves the right to make revisions.

# PARK GATE RESIDENCES TOWER B

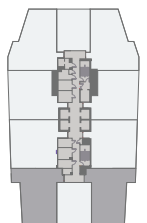


## 2 BR / TYPE 1A

SUITE	1,365.19 SQ.FT.	126.83 SQ.M.
TERRACE	206.88 SQ.FT.	19.22 SQ.M.
<b>TOTAL</b>	<b>1,572.07 SQ.FT.</b>	<b>146.05 SQ.M.</b>

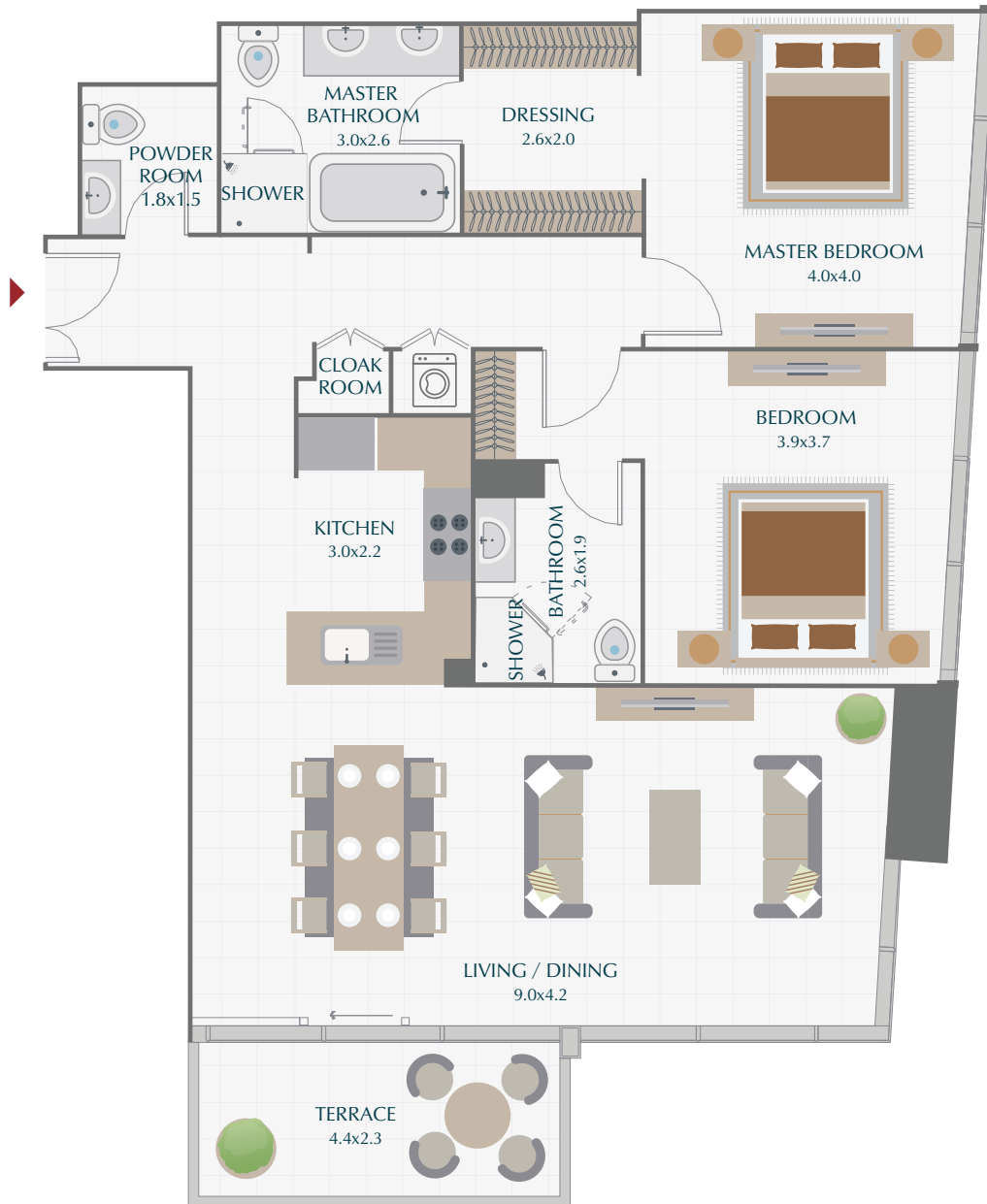


TOWERS A & D ARE IDENTICAL AND MIRRORED, AND TOWERS B & C ARE IDENTICAL AND MIRRORED.



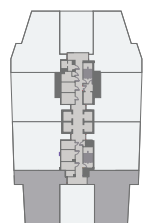
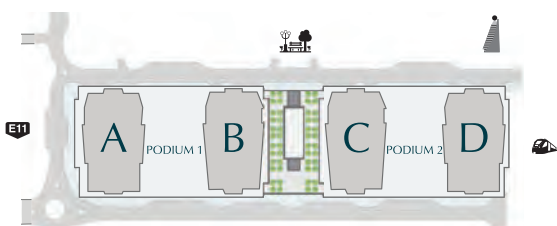
All room dimensions are in metric and measured to structural elements and exclude wall finishes and construction tolerances. Calculation of suite area is measured as the area bounded by the centerline of demising or party walls separating one unit from another unit, the exterior surface of all exterior walls and the exterior surface of the corridor wall on enclosing and abutting the unit. Calculation of Terrace area is measured as the area bounded by the centerlines of demising or party walls separating one unit from another unit, the outermost face of the enclosing guard and the external face of the site abutting the balcony. All materials, dimensions & drawings features and amenities are approximate at the time of printing. Information subject to change without notice. Actual suite areas may vary from the stated area. Drawings are not to scale E&O. The developer reserves the right to make revisions.

# PARK GATE RESIDENCES TOWER B



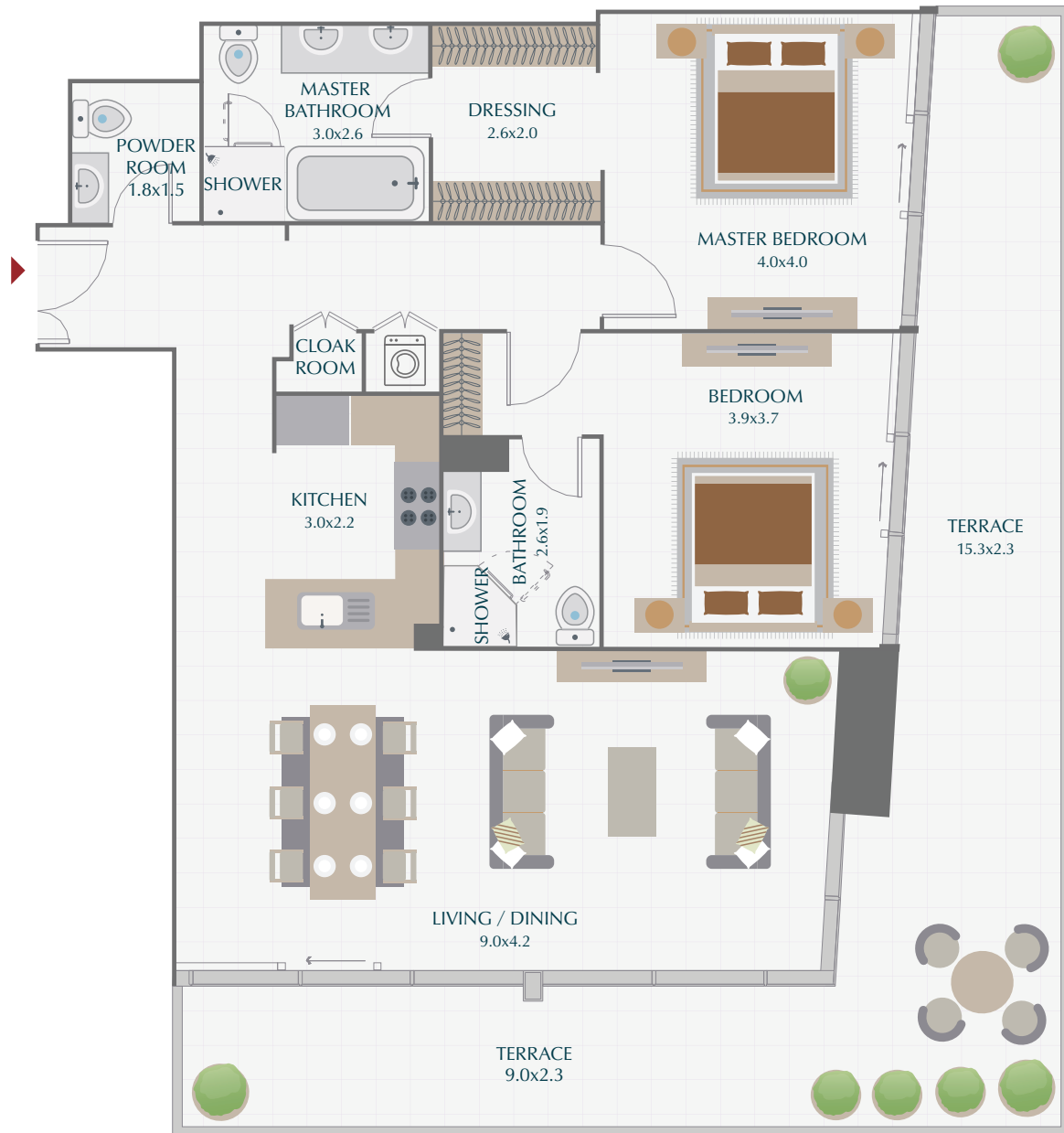
## 2 BR / TYPE 1B

SUITE	1,365.19 SQ.FT.	126.83 SQ.M.
TERRACE	112.91 SQ.FT.	10.49 SQ.M.
<b>TOTAL</b>	<b>1,478.10 SQ.FT.</b>	<b>137.32 SQ.M.</b>



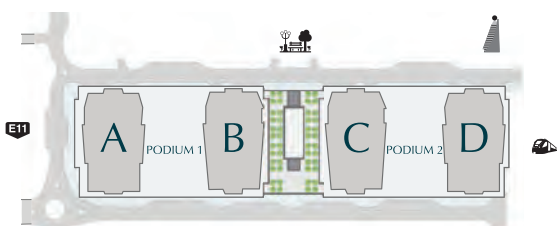
TOWERS A & D ARE IDENTICAL AND MIRRORED, AND TOWERS B & C ARE IDENTICAL AND MIRRORED.

All room dimensions are in metric and measured to structural elements and exclude wall finishes and construction tolerances. Calculation of suite area is measured as the area bounded by the centerline of demising or party walls separating one unit from another unit, the exterior surface of all exterior walls and the exterior surface of the corridor wall on enclosing and abutting the unit. Calculation of Terrace area is measured as the area bounded by the centerlines of demising or party walls separating one unit from another unit, the outermost face of the enclosing guard and the external face of the site abutting the balcony. All materials, dimensions & drawings features and amenities are approximate at the time of printing. Information subject to change without notice. Actual suite areas may vary from the stated area. Drawings are not to scale E&O. The developer reserves the right to make revisions.

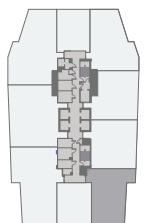


## 2 BR / TYPE 1C

SUITE	1,365.83 SQ.FT.	126.89 SQ.M.
TERRACE	679.53 SQ.FT.	63.13 SQ.M.
<b>TOTAL</b>	<b>2,045.36 SQ.FT.</b>	<b>190.02 SQ.M.</b>



TOWERS A & D ARE IDENTICAL AND MIRRORED, AND TOWERS B & C ARE IDENTICAL AND MIRRORED.

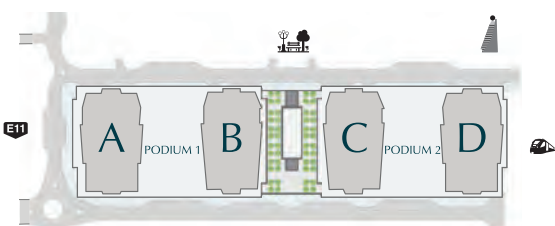


All room dimensions are in metric and measured to structural elements and exclude wall finishes and construction tolerances. Calculation of suite area is measured as the area bounded by the centerline of demising or party walls separating one unit from another unit, the exterior surface of all exterior walls and the exterior surface of the corridor wall on enclosing and abutting the unit. Calculation of Terrace area is measured as the area bounded by the centerlines of demising or party walls separating one unit from another unit, the outermost face of the enclosing guard and the external face of the site abutting the balcony. All materials, dimensions & drawings features and amenities are approximate at the time of printing. Information subject to change without notice. Actual suite areas may vary from the stated area. Drawings are not to scale E&O. The developer reserves the right to make revisions.

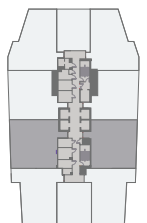


## 2 BR / TYPE 2A

SUITE	1,413.62 SQ.FT.	131.33 SQ.M.
TERRACE	137.35 SQ.FT.	12.76 SQ.M.
<b>TOTAL</b>	<b>1,550.97 SQ.FT.</b>	<b>144.09 SQ.M.</b>



TOWERS A & D ARE IDENTICAL AND MIRRORED, AND TOWERS B & C ARE IDENTICAL AND MIRRORED.

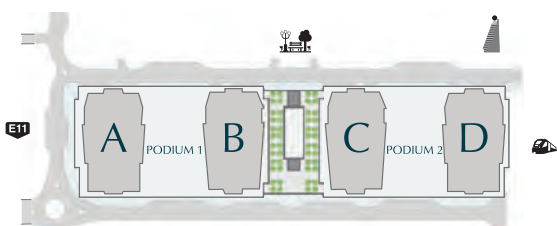


All room dimensions are in metric and measured to structural elements and exclude wall finishes and construction tolerances. Calculation of suite area is measured as the area bounded by the centerline of demising or party walls separating one unit from another unit, the exterior surface of all exterior walls and the exterior surface of the corridor wall on enclosing and abutting the unit. Calculation of Terrace area is measured as the area bounded by the centerlines of demising or party walls separating one unit from another unit, the outermost face of the enclosing guard and the external face of the site abutting the balcony. All materials, dimensions & drawings features and amenities are approximate at the time of printing. Information subject to change without notice. Actual suite areas may vary from the stated area. Drawings are not to scale E&O. The developer reserves the right to make revisions.

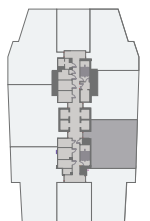


## 2 BR / TYPE 2B

SUITE	1,413.62 SQ.FT.	131.33 SQ.M.
TERRACE	512.58 SQ.FT.	47.62 SQ.M.
<b>TOTAL</b>	<b>1,926.20 SQ.FT.</b>	<b>178.95 SQ.M.</b>



TOWERS A & D ARE IDENTICAL AND MIRRORED, AND TOWERS B & C ARE IDENTICAL AND MIRRORED.



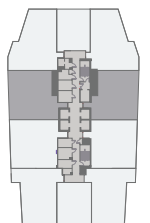
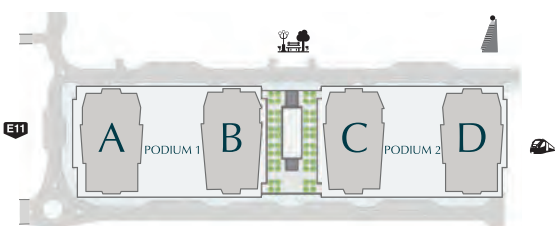
All room dimensions are in metric and measured to structural elements and exclude wall finishes and construction tolerances. Calculation of suite area is measured as the area bounded by the centerline of demising or party walls separating one unit from another unit, the exterior surface of all exterior walls and the exterior surface of the corridor wall on enclosing and abutting the unit. Calculation of Terrace area is measured as the area bounded by the centerlines of demising or party walls separating one unit from another unit, the outermost face of the enclosing guard and the external face of the site abutting the balcony. All materials, dimensions & drawings features and amenities are approximate at the time of printing. Information subject to change without notice. Actual suite areas may vary from the stated area. Drawings are not to scale E&O. The developer reserves the right to make revisions.

# PARK GATE RESIDENCES TOWER B



## 2 BR / TYPE 3A

SUITE	1,460.77 SQ.FT.	135.71 SQ.M.
TERRACE	157.80 SQ.FT.	14.66 SQ.M.
<b>TOTAL</b>	<b>1,618.57 SQ.FT.</b>	<b>150.37 SQ.M.</b>



TOWERS A & D ARE IDENTICAL AND MIRRORED, AND TOWERS B & C ARE IDENTICAL AND MIRRORED.

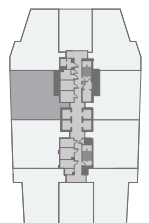
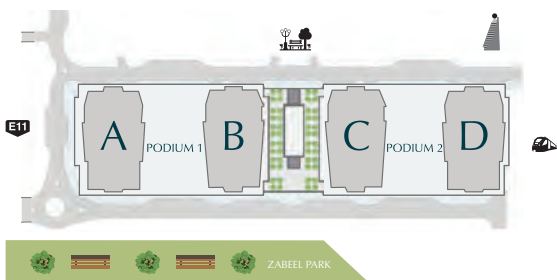
All room dimensions are in metric and measured to structural elements and exclude wall finishes and construction tolerances. Calculation of suite area is measured as the area bounded by the centerline of demising or party walls separating one unit from another unit, the exterior surface of all exterior walls and the exterior surface of the corridor wall on enclosing and abutting the unit. Calculation of Terrace area is measured as the area bounded by the centerlines of demising or party walls separating one unit from another unit, the outermost face of the enclosing guard and the external face of the site abutting the balcony. All materials, dimensions & drawings features and amenities are approximate at the time of printing. Information subject to change without notice. Actual suite areas may vary from the stated area. Drawings are not to scale E&O. The developer reserves the right to make revisions.

# PARK GATE RESIDENCES TOWER B



## 2 BR / TYPE 3B

SUITE	1,460.45 SQ.FT.	135.68 SQ.M.
TERRACE	75.02 SQ.FT.	6.97 SQ.M.
<b>TOTAL</b>	<b>1,535.47 SQ.FT.</b>	<b>142.65 SQ.M.</b>



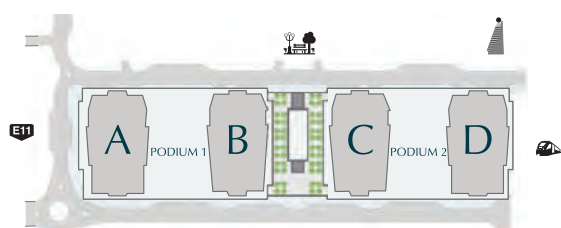
TOWERS A & D ARE IDENTICAL AND MIRRORED, AND TOWERS B & C ARE IDENTICAL AND MIRRORED.

All room dimensions are in metric and measured to structural elements and exclude wall finishes and construction tolerances. Calculation of suite area is measured as the area bounded by the centerline of demising or party walls separating one unit from another unit, the exterior surface of all exterior walls and the exterior surface of the corridor wall on enclosing and abutting the unit. Calculation of Terrace area is measured as the area bounded by the centerlines of demising or party walls separating one unit from another unit, the outermost face of the enclosing guard and the external face of the site abutting the balcony. All materials, dimensions & drawings features and amenities are approximate at the time of printing. Information subject to change without notice. Actual suite areas may vary from the stated area. Drawings are not to scale E&O. The developer reserves the right to make revisions.

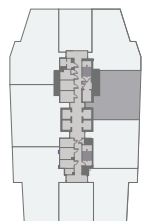


## 2 BR / TYPE 3C

SUITE	1,461.09 SQ.FT.	135.74 SQ.M.
TERRACE	461.02 SQ.FT.	42.83 SQ.M.
<b>TOTAL</b>	<b>1,922.11 SQ.FT.</b>	<b>178.57 SQ.M.</b>



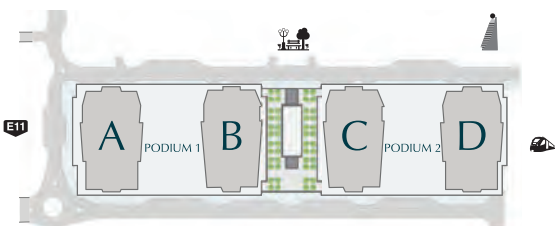
TOWERS A & D ARE IDENTICAL AND MIRRORED, AND TOWERS B & C ARE IDENTICAL AND MIRRORED.



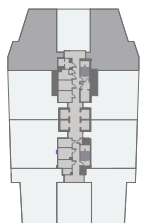


## 2 BR / TYPE 4A

SUITE	1,377.14 SQ.FT.	127.94 SQ.M.
TERRACE	257.47 SQ.FT.	23.92 SQ.M.
<b>TOTAL</b>	<b>1,634.61 SQ.FT.</b>	<b>151.86 SQ.M.</b>



TOWERS A & D ARE IDENTICAL AND MIRRORED, AND TOWERS B & C ARE IDENTICAL AND MIRRORED.



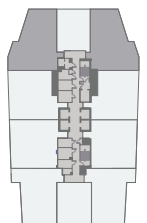
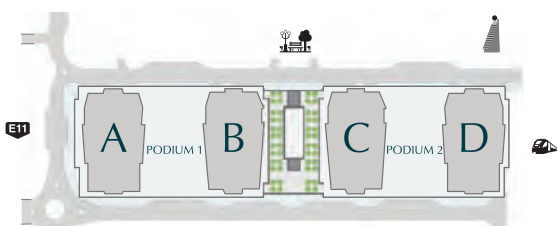
All room dimensions are in metric and measured to structural elements and exclude wall finishes and construction tolerances. Calculation of suite area is measured as the area bounded by the centerline of demising or party walls separating one unit from another unit, the exterior surface of all exterior walls and the exterior surface of the corridor wall on enclosing and abutting the unit. Calculation of Terrace area is measured as the area bounded by the centerlines of demising or party walls separating one unit from another unit, the outermost face of the enclosing guard and the external face of the site abutting the balcony. All materials, dimensions & drawings features and amenities are approximate at the time of printing. Information subject to change without notice. Actual suite areas may vary from the stated area. Drawings are not to scale E&O. The developer reserves the right to make revisions.

# PARK GATE RESIDENCES TOWER B



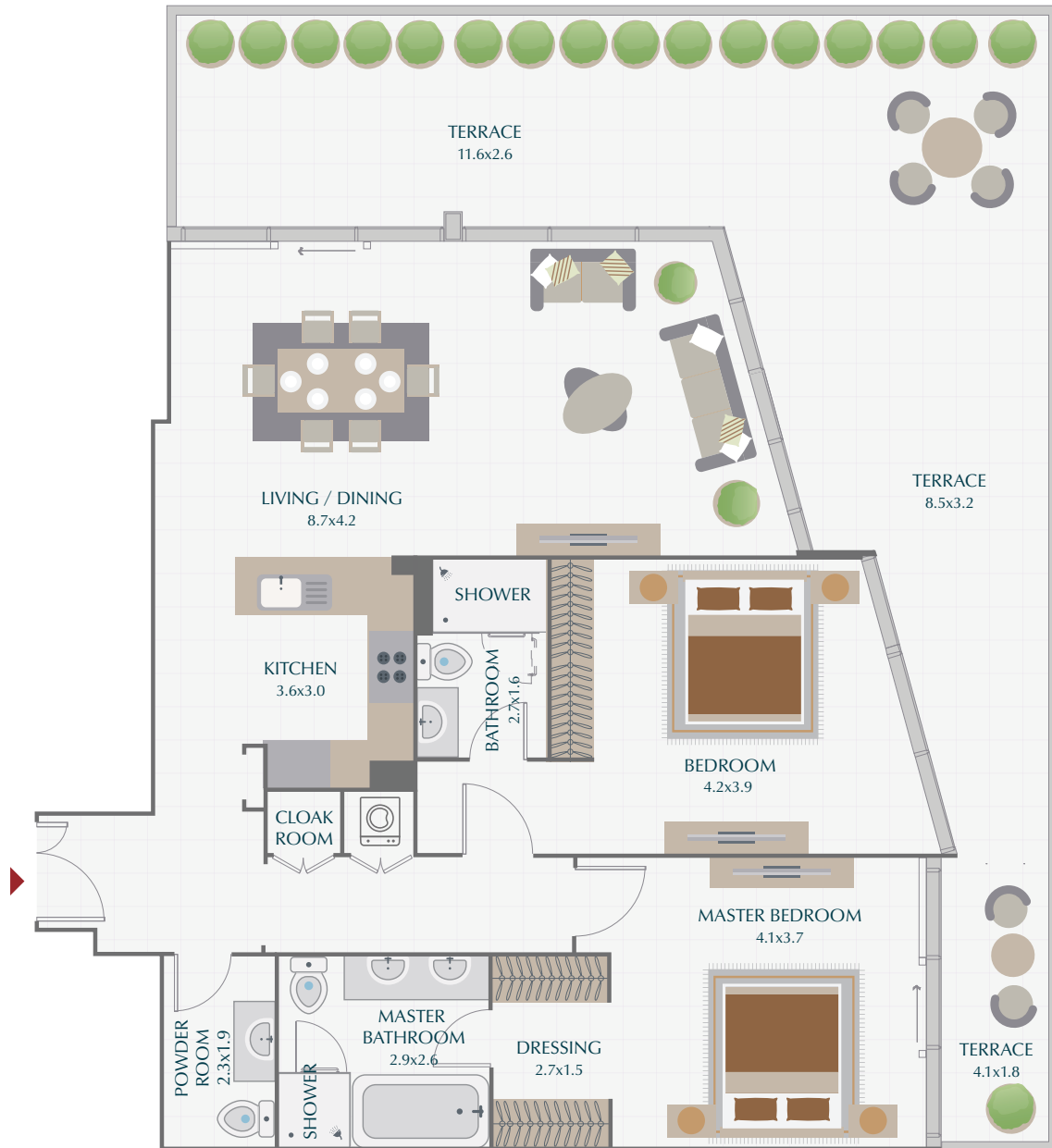
## 2 BR / TYPE 4B

SUITE	1,377.14 SQ.FT.	127.94 SQ.M.
TERRACE	179.22 SQ.FT.	16.65 SQ.M.
<b>TOTAL</b>	<b>1,556.36 SQ.FT.</b>	<b>144.59 SQ.M.</b>



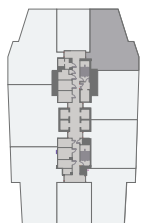
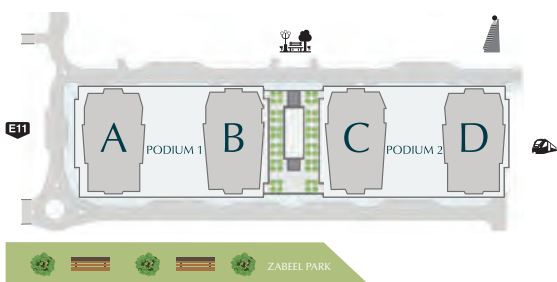
TOWERS A & D ARE IDENTICAL AND MIRRORED, AND TOWERS B & C ARE IDENTICAL AND MIRRORED.

All room dimensions are in metric and measured to structural elements and exclude wall finishes and construction tolerances. Calculation of suite area is measured as the area bounded by the centerline of demising or party walls separating one unit from another unit, the exterior surface of all exterior walls and the exterior surface of the corridor wall on enclosing and abutting the unit. Calculation of Terrace area is measured as the area bounded by the centerlines of demising or party walls separating one unit from another unit, the outermost face of the enclosing guard and the external face of the site abutting the balcony. All materials, dimensions & drawings features and amenities are approximate at the time of printing. Information subject to change without notice. Actual suite areas may vary from the stated area. Drawings are not to scale E&O. The developer reserves the right to make revisions.



## 2 BR / TYPE 4D

SUITE	1,380.69 SQ.FT.	128.27 SQ.M.
TERRACE	668.01 SQ.FT.	62.06 SQ.M.
<b>TOTAL</b>	<b>2,048.70 SQ.FT.</b>	<b>190.33 SQ.M.</b>



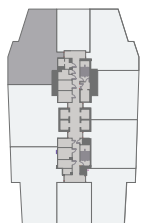
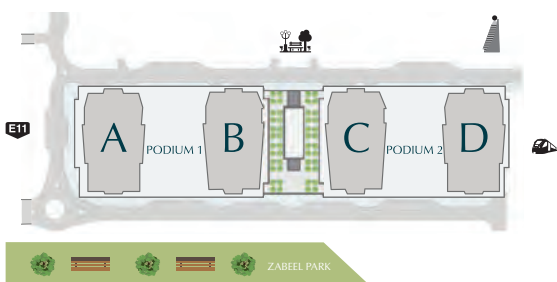
TOWERS A & D ARE IDENTICAL AND MIRRORED, AND TOWERS B & C ARE IDENTICAL AND MIRRORED.

All room dimensions are in metric and measured to structural elements and exclude wall finishes and construction tolerances. Calculation of suite area is measured as the area bounded by the centerline of demising or party walls separating one unit from another unit, the exterior surface of all exterior walls and the exterior surface of the corridor wall on enclosing and abutting the unit. Calculation of Terrace area is measured as the area bounded by the centerlines of demising or party walls separating one unit from another unit, the outermost face of the enclosing guard and the external face of the site abutting the balcony. All materials, dimensions & drawings features and amenities are approximate at the time of printing. Information subject to change without notice. Actual suite areas may vary from the stated area. Drawings are not to scale E&O. The developer reserves the right to make revisions.



## 2 BR / TYPE 4F

SUITE	1,377.46 SQ.FT.	127.97 SQ.M.
TERRACE	687.60 SQ.FT.	63.88 SQ.M.
<b>TOTAL</b>	<b>2,065.06 SQ.FT.</b>	<b>191.85 SQ.M.</b>



TOWERS A & D ARE IDENTICAL AND MIRRORED, AND TOWERS B & C ARE IDENTICAL AND MIRRORED.

All room dimensions are in metric and measured to structural elements and exclude wall finishes and construction tolerances. Calculation of suite area is measured as the area bounded by the centerline of demising or party walls separating one unit from another unit, the exterior surface of all exterior walls and the exterior surface of the corridor wall on enclosing and abutting the unit. Calculation of Terrace area is measured as the area bounded by the centerlines of demising or party walls separating one unit from another unit, the outermost face of the enclosing guard and the external face of the site abutting the balcony. All materials, dimensions & drawings features and amenities are approximate at the time of printing. Information subject to change without notice. Actual suite areas may vary from the stated area. Drawings are not to scale E&O. The developer reserves the right to make revisions.

